

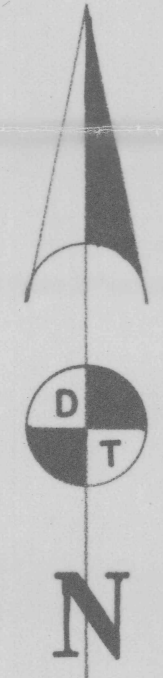
HOMESTEAD 1-6

SW1/4 SEC. 18 T.18S. R.12E.W.M.
DESCHUTES COUNTY

AVION WATER CO. INC.
6-9-81

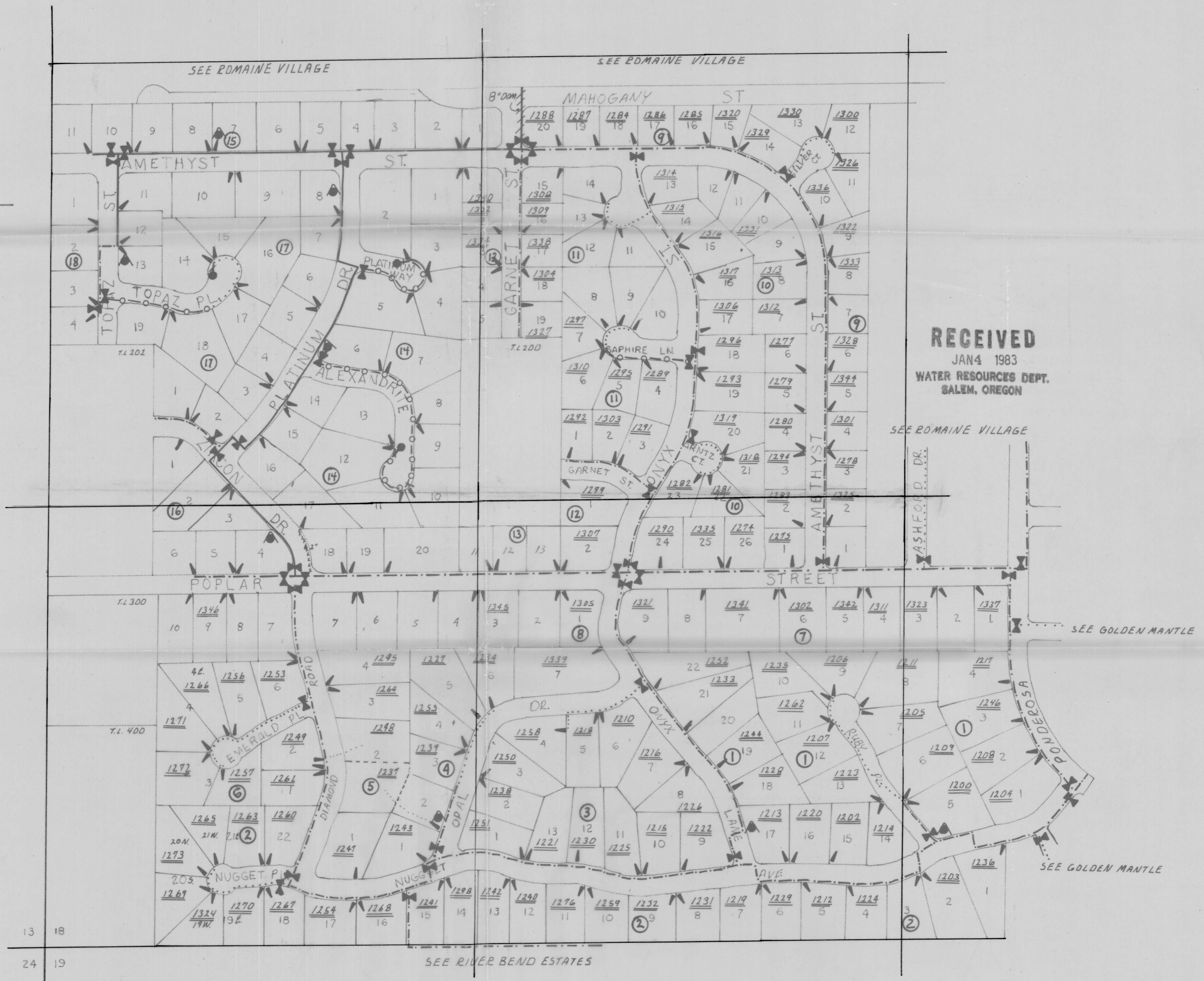
LEGEND

- 6" DOM
- 4" "
- 3" "
- 2" "
- VALVE
- HYDRANT
- SERVICE
- BLOWOFF
- ACCOUNT NO.



SCALE: 1" = 200'

Application No. G-10421
Permit No. G 9948



RECEIVED
JAN 4 1983
WATER RESOURCES DEPT.
SALEM, OREGON

RECEIVED
JUL 2 1981
WATER RESOURCES DEPT.
SALEM, OREGON

NE 1/4 SEC. 18 T. 18 S. R. 12 E. W. 4 M.
DESCHUTES COUNTY

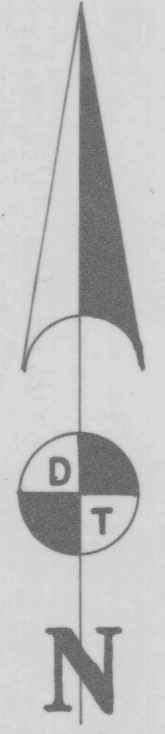
AVION WATER CO. INC.
6-9-81

LEGEND

- 5" DOM. —————
- 4" DOM. - - - - -
- 3" DOM. ·······
- 2" DOM.·
- WELL •



NOTE: PINEBROOK IS NOT
PART OF APPLICATION



SCALE: 1" = 200'

RECEIVED
JAN 4 1983
WATER RESOURCES DEPT.
SALEM, OREGON

Application No. G-10421
Permit No. G 9948

ROMAINE VILLAGE UNIT 2-3-4

ROMAINE VILLAGE UNIT 6

ROMAINE VILLAGE
UNIT - 8 AND 9

LODGEPOLE
DRIVE

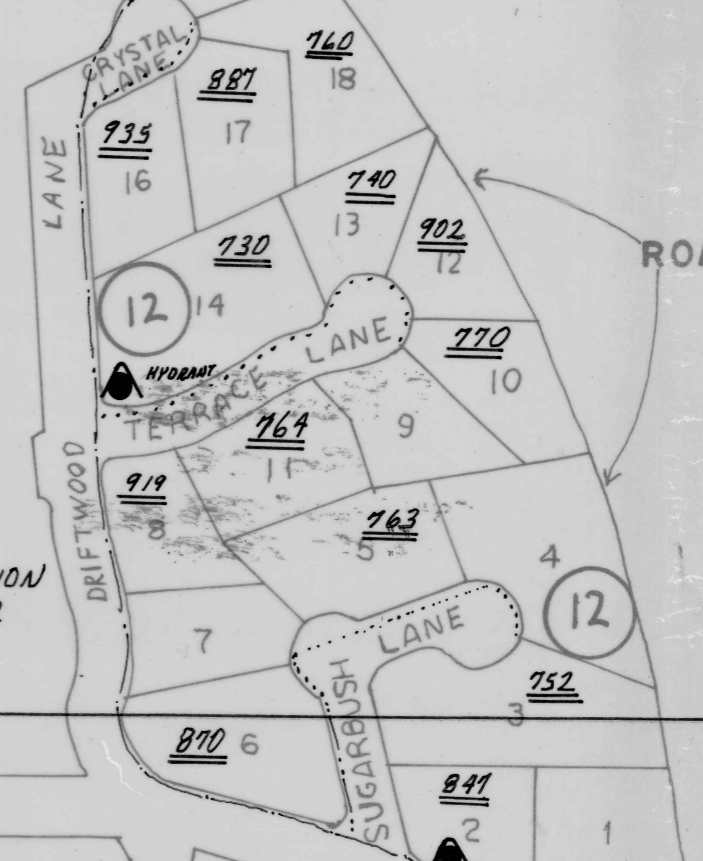
WAY WEST

ROMAINE VILLAGE

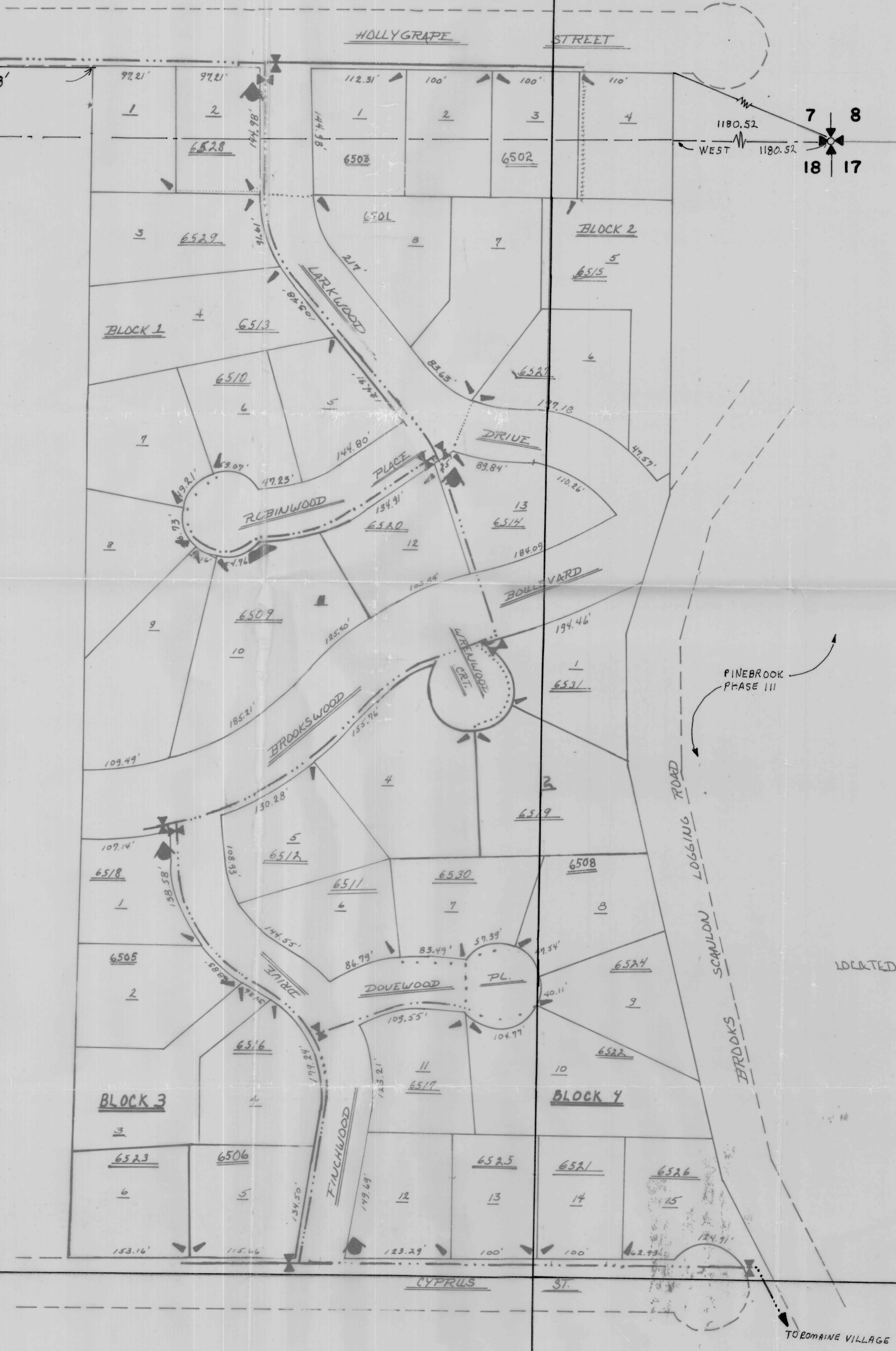
RENTAL

PARK

RECREATION
CENTER



LARKWOOD ESTATES



RECEIVED
 JAN 4 1983
 WATER RESOURCES DEPT.
 SALEM, OREGON

Application No. G-10421
 Permit No. G 9918

LOCATED IN SE 1/4, SECTION 7, & NE 1/4, SECTION 18,
 T. 18S., R. 12E., W.M.
 SCALE = 1"=100'

LEGEND	
5" Dom	— — — — —
4" Dom	— — — — —
2" Dom	— — — — —
Value	— — — — —
Fire Hydrant	— — — — —
Service	— — — — —
Service Line	— — — — —
3" Dom	— — — — —
Well	— — — — —
ACCOUNT No.	#

RECEIVED
 JUL 2 1981
 WATER RESOURCES DEPT.
 SALEM, OREGON

RECEIVED
JUL 2 1981
WATER RESOURCES DEPT
SALEM, OREGON

NW1/4 SEC. 18 T.18S. R.12E.W.M.
DESGHUTES COUNTY

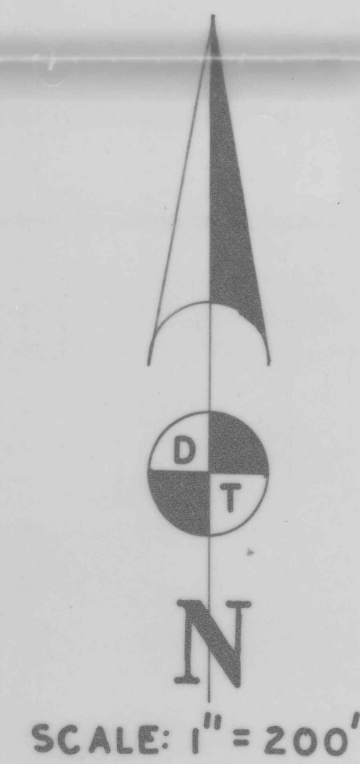
AVION WATER CO. INC.
6-9-81

ROMAINE VILLAGE UNIT 8-9

LEGEND

- 4" DOM. - - - - -
- 3" DOM. - - - - -
- 2" DOM. ·····

RECEIVED
JAN 4 1983
WATER RESOURCES DEPT.
SALEM, OREGON



Application No. G-1042
Permit No. G 8819



TO HOMESTEAD

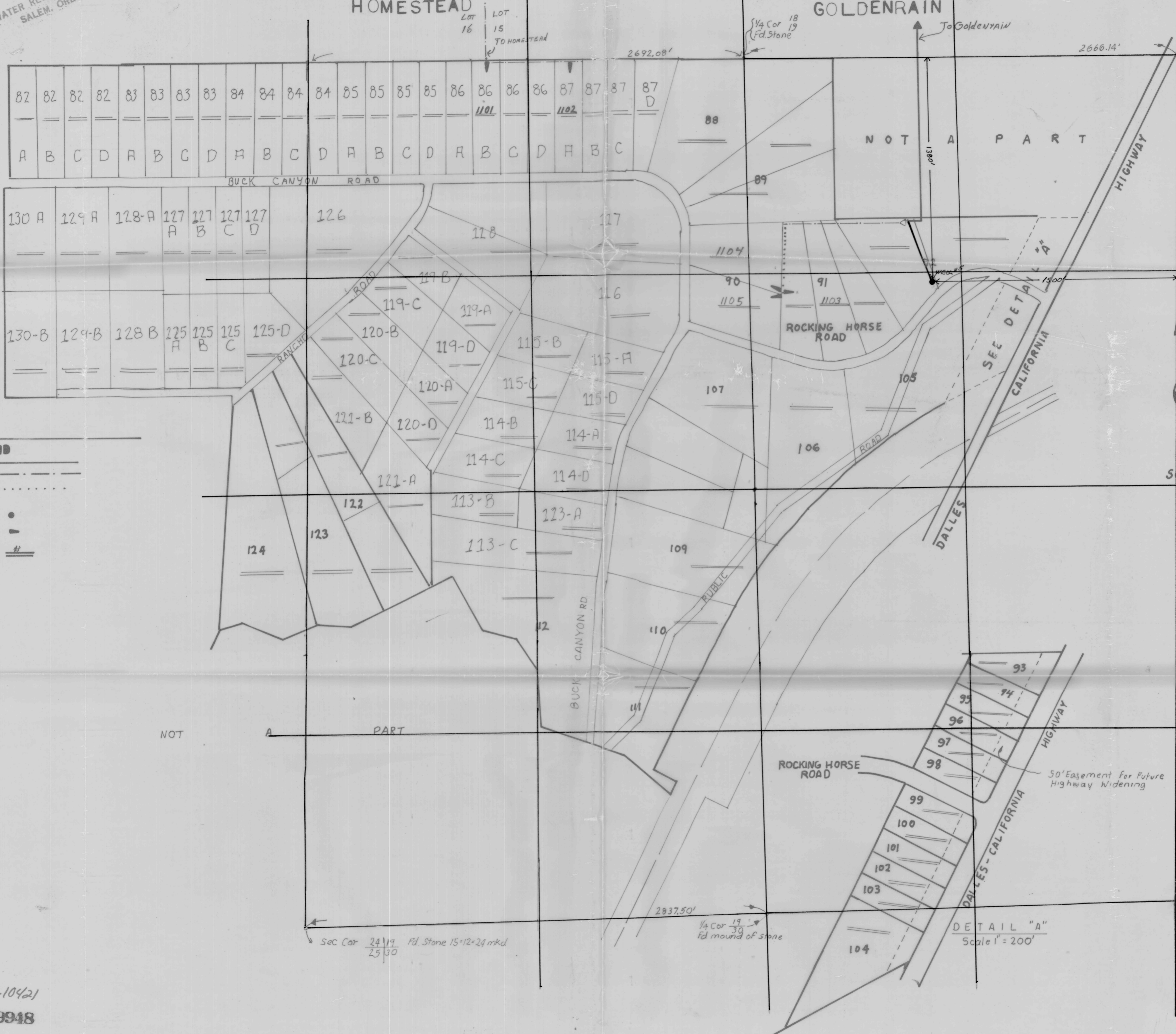
TO WELL

TO LARKWOOD

RECEIVED
 JUL 2 1981
 WATER RESOURCES DEPT
 SALEM, OREGON

RIVER BEND ESTATES

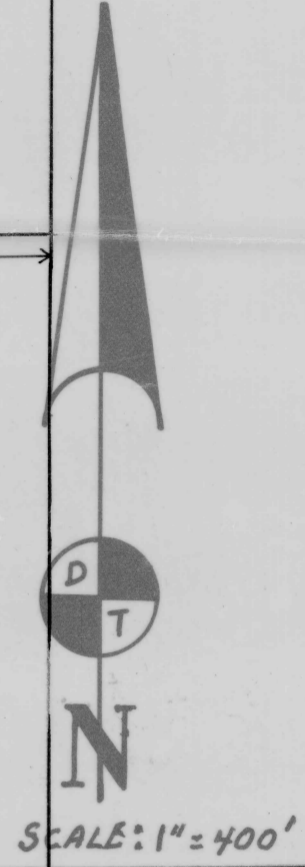
MAP NO. 1



LEGEND

6" —————
 4" - - - - -
 2" ·······

WELL SERVICE ACCOUNT NO. #



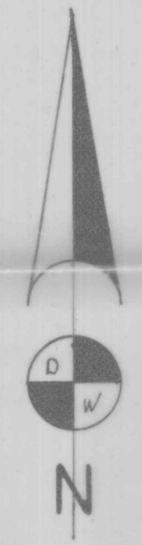
RECEIVED
 JAN 4 1983
 WATER RESOURCES DEPT.
 SALEM, OREGON

Application No. G-10421
 Permit No. G 9948

RECEIVED
JUL 8 1981
WATER RESOURCES DEPT.
SALEM, OREGON

Romaine Village

c. 1/4 Cor.
SEC. 18



LEGEND

- 4" DOM. -----
- 3" DOM. -----
- 2" DOM. -----
- WELL-RES. ■
- ACCOUNT NO. #

HOMESTEAD

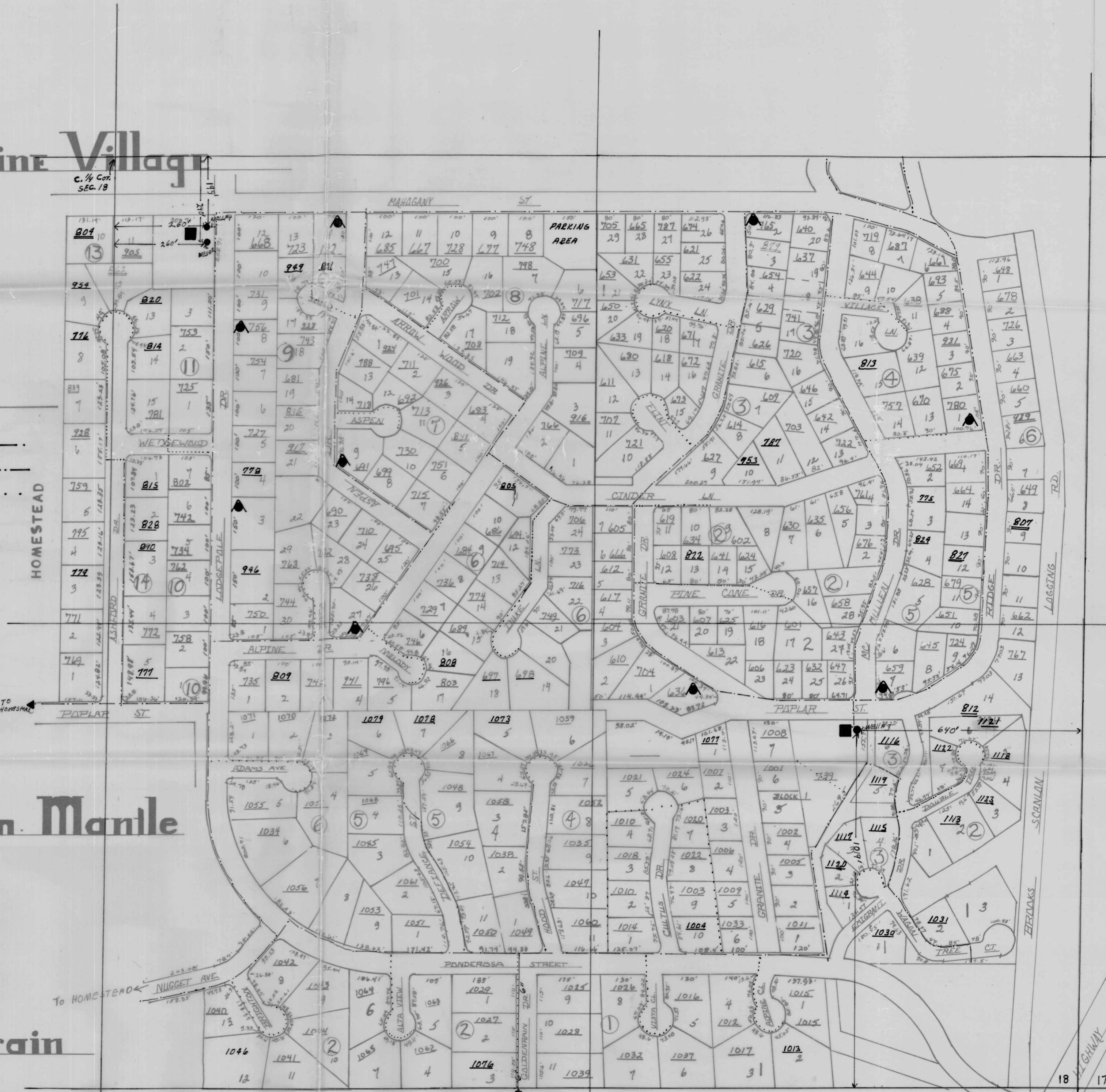
Golden Mantle

Goldenrain

RIVER BEND ESTATES

RECEIVED
JAN 4 1983
WATER RESOURCES DEPT.
SALEM, OREGON

Application No. 6-10421
Permit No. G 9948



18 17
19 20