

TETHEROW CROSSING PHASE 5

LOCATED IN A PORTION OF THE E.1/2, S.W.1/4, SEC.25
AND N.W.1/4, SEC.36, T.14S., R.12E., W.M. DES. CO, ORE.

LEGEND

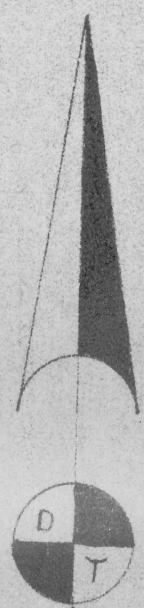
4" DOM.

VALVE 

SERVICE 

WELL 

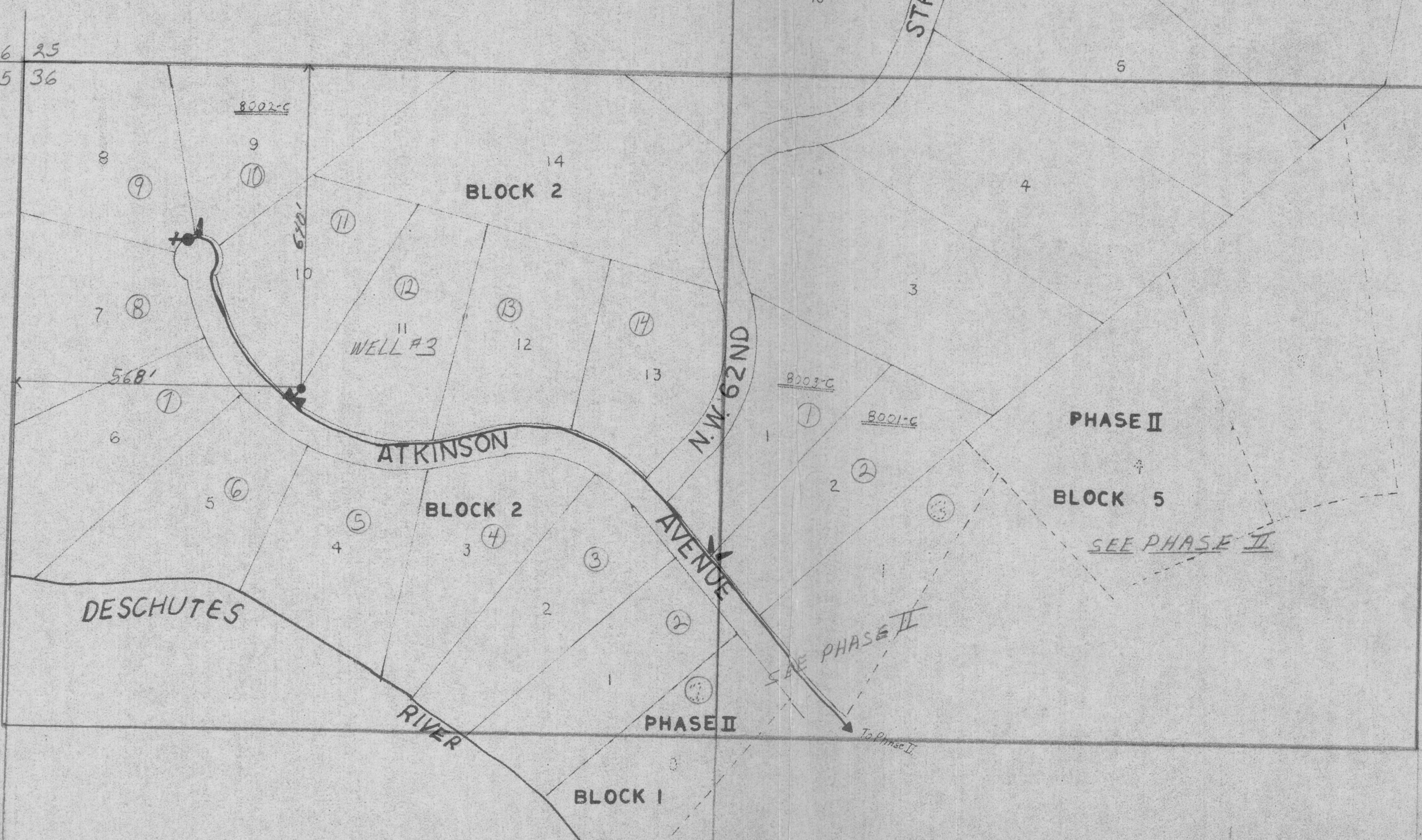
ACCOUNT NO. 



N

SCALE: 1" = 200'

26 25
35 36



Application No. A-10371
Permit No. G 9999

RECEIVED

MAR 9 1983
WATER RESOURCES DEPT.
SALEM, OREGON

RECEIVED

FEB 9 1983
WATER RESOURCES DEPT.
SALEM, OREGON

WELL #3 IS LOCATED 640 FEET SOUTH AND 568 FEET FROM THE NW CORNER OF SEC 36 T.14S. R.12E. BEING WITHIN THE NW 1/4 NW 1/4 OF SEC 36 T.14S. R.12E. W.M. IN THE COUNTY OF DESCHUTES

T.14S. R.12E. SEC 36:
NW 1/4 NW 1/4 14 DOMESTIC USERS AT 2.5 GPM EACH

NOTE: CIRCLED NUMBERS INDICATE POTENTIAL USERS. UNDERLINED NUMBERS INDICATE PRESENT USERS.

: DOMESTIC USES TO INCLUDE IRRIGATION OF LAWNS AND NON-COMMERCIAL GARDENS NOT TO EXCEED 1/2 ACRE PER FAMILY

: QUARTER-QUARTERS APPLIED FOR INDICATED IN RED.

**TETHEROW CROSSING
PHASE II**

IN SEC. 36, AND THE S 1/4 SEC. 25, T.14S., R.12E., W.M.

AVION WATER CO. INC.

ENGINEERING DEPT.
9-15-180 DW

R12E R13E

LEGEND

4" DOMESTIC MAIN ———

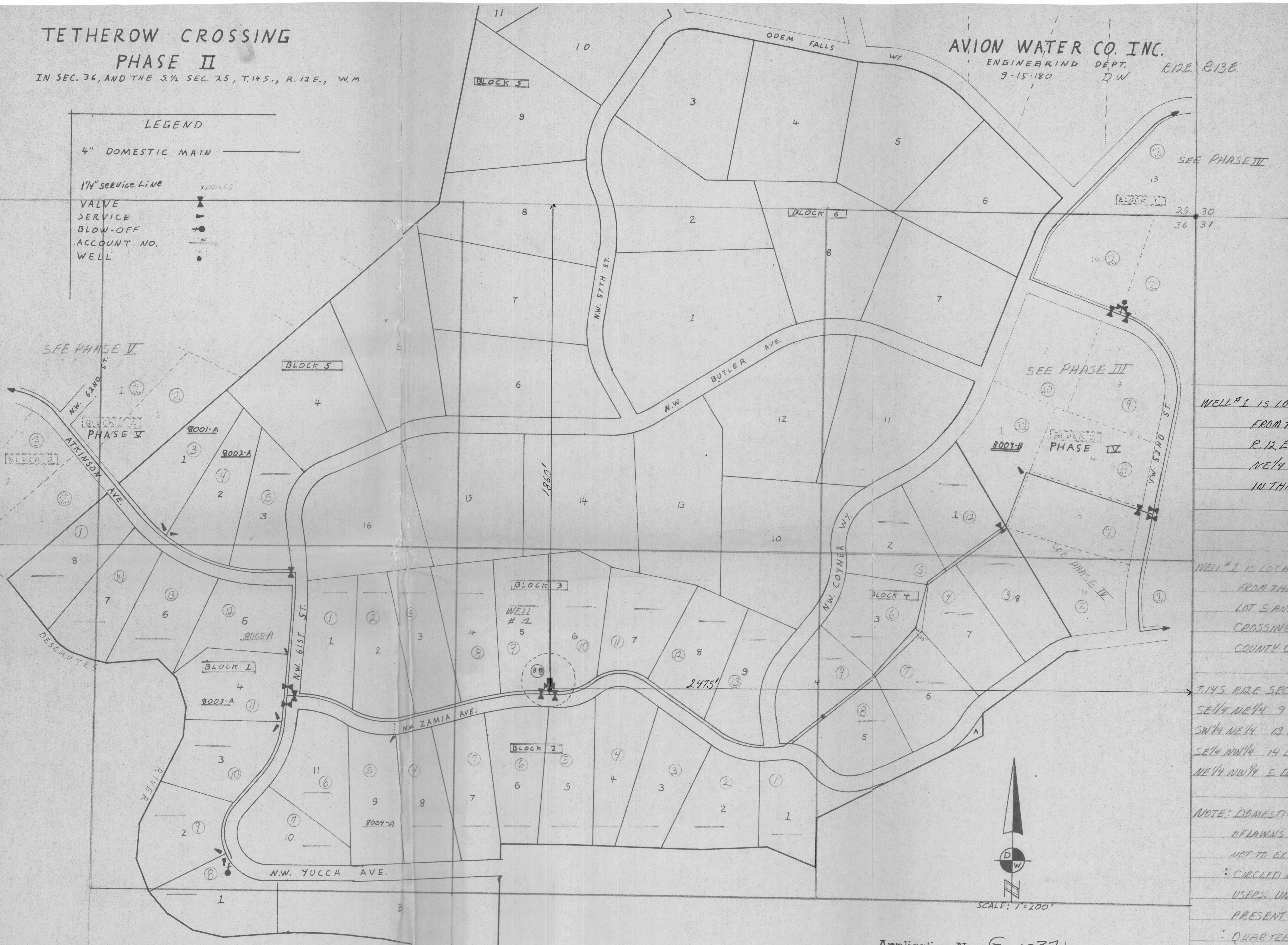
1 1/4" service Line ———

VALVE ———

SERVICE BLOW-OFF ———

ACCOUNT NO. ———

WELL ———



WELL # 1 IS LOCATED 1860' SOUTH AND 2475' WEST FROM THE NE CORNER OF SEC. 36 T.14S R.12E BEING WITHIN THE SW 1/4 OF THE NE 1/4 OF SEC. 36 T.14S. R.12E, W.M. IN THE COUNTY OF DESCHUTES.

ALSO
WELL # 1 IS LOCATED N 10° 31' 29" W 20 FEET FROM THE SOUTH LOT CORNER COMMON TO LOT 5 AND LOT 6 BLOCK 3 OF TETHEROW CROSSING PHASE II AS DE RECORDED WITH COUNTY CLERK, IN DESCHUTES COUNTY.

T.14S. R.12E SEC. 36:
SE 1/4 NE 1/4 9 DOMESTIC USERS AT 2.5 GPM EACH
SW 1/4 NE 1/4 13 DOMESTIC USERS AT 2.5 GPM EACH
SE 1/4 NW 1/4 14 DOMESTIC USERS AT 2.5 GPM EACH
NE 1/4 NW 1/4 5 DOMESTIC USERS AT 2.5 GPM EACH

NOTE: DOMESTIC USERS INCLUDE IRRIGATION OF LAWNS AND NON-COMMERCIAL GARDENS NOT TO EXCEED 1/4 ACRE PER FAMILY
: CIRCLED NUMBERS INDICATE POTENTIAL USERS. UNDERLINED NUMBERS INDICATE PRESENT USERS.
: QUARTER-QUARTERS APPLIED FOR INDICATED IN RED.

Application No. G-10371
Permit No. G 9999

RECEIVED
FEB 9 1983
WATER RESOURCES DEPT.
SALEM, OREGON

RECEIVED
MAR 9 1983
WATER RESOURCES DEPT.
SALEM, OREGON

TETHEROW CROSSING PHASE IV

IN THE W. 1/2 SEC. 30 & 31, T. 14 S. R. 13 E., W. M.
AND THE E. 1/2 SEC. 25 & 36, T. 14 S. R. 12 E., W. M.

LEGEND

4" DOMESTIC MAIN —————

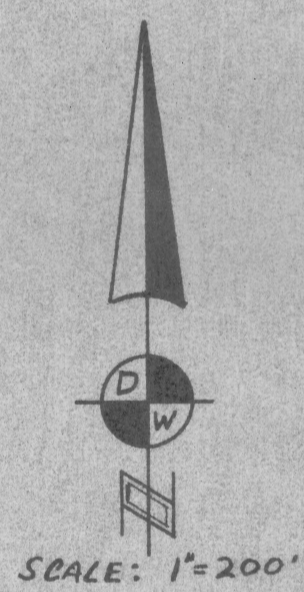
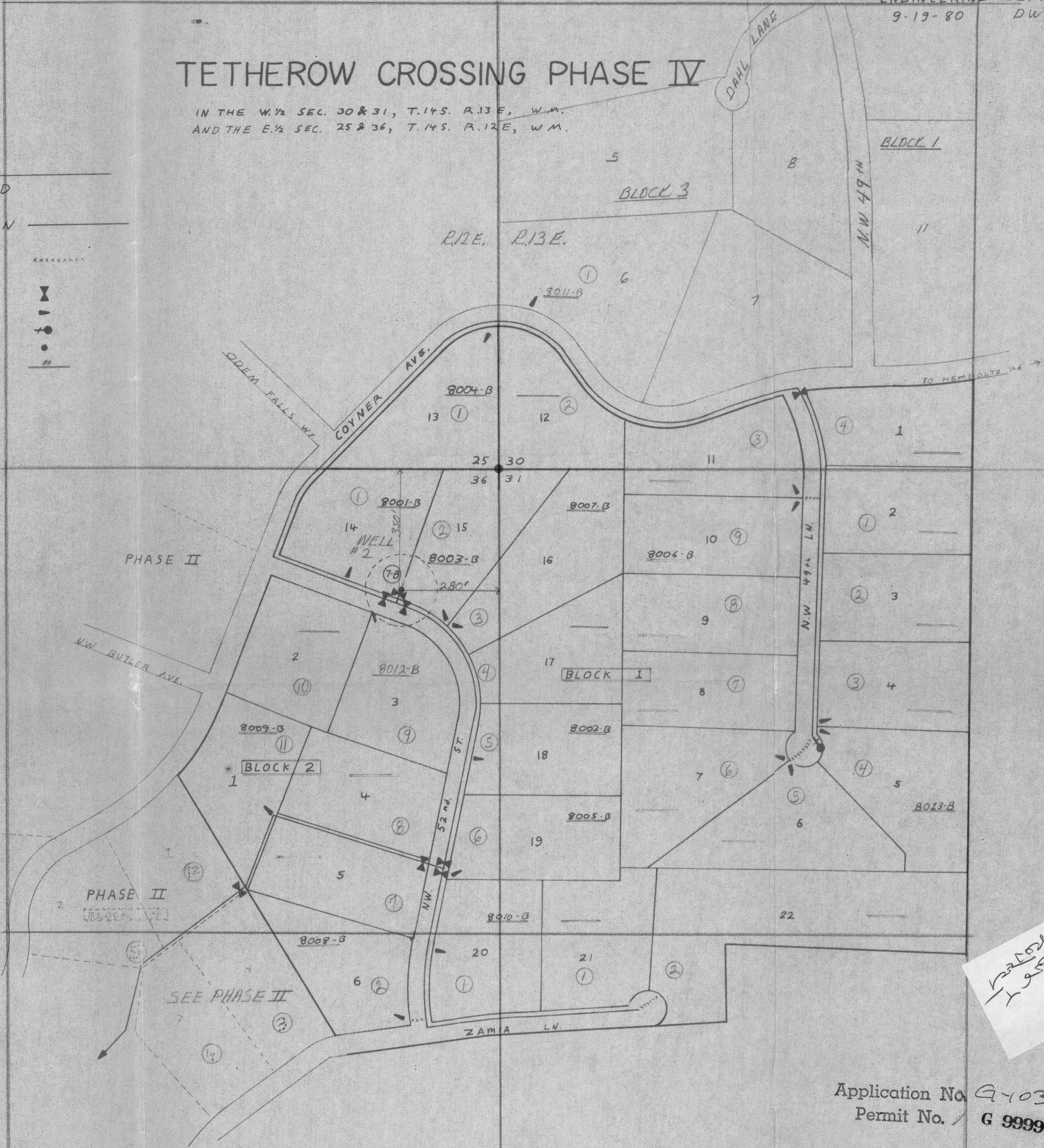
SERVICE LINE - - - - -

VALVE

SERVICE BLOW OFF

WELL

ACCOUNT NO. #



Handwritten note:
 1-10371
 1-9999

Application No. G-10371
 Permit No. G 9999

WELL #2 IS LOCATED 350 FEET SOUTH AND 280 FEET WEST FROM THE N.E. CORNER OF SEC 36 T. 14 S. R. 12 E. BEING WITHIN THE NE 1/4 NE 1/4 OF SEC 36 T. 14 S. R. 12 E. W.M. IN THE COUNTY OF DESCHUTES.

T. 14 S. R. 13 E. SEC 30:
 SW 1/4 SW 1/4 4 DOMESTIC USERS AT 2.5 GPM EACH

T. 14 S. R. 13 E. SEC 31:
 NW 1/4 NW 1/4 9 DOMESTIC USERS AT 2.5 GPM EACH
 SW 1/4 NW 1/4 2 DOMESTIC USERS AT 2.5 GPM EACH

T. 14 S. R. 12 E. SEC 25:
 SE 1/4 SE 1/4 1 DOMESTIC USER AT 2.5 GPM

T. 14 S. R. 12 E. SEC 36
 NE 1/4 NE 1/4 12 DOMESTIC USERS AT 2.5 GPM EACH

NOTE: DOMESTIC USE TO INCLUDE IRRIGATION OF LAWNS AND NON-COMMERCIAL GAR DENS NOT TO EXCEED 1/2 ACRE PER FAMILY.
 : CIRCLED NUMBERS INDICATE POTENTIAL USERS. UNDERLINED NUMBERS INDICATE PRESENT USERS.
 : QUARTER-QUARTERS APPLIED FOR INDICATED IN RED.

RECEIVED
 FEB 9 1983
 WATER RESOURCES DEPT.
 SALEM, OREGON

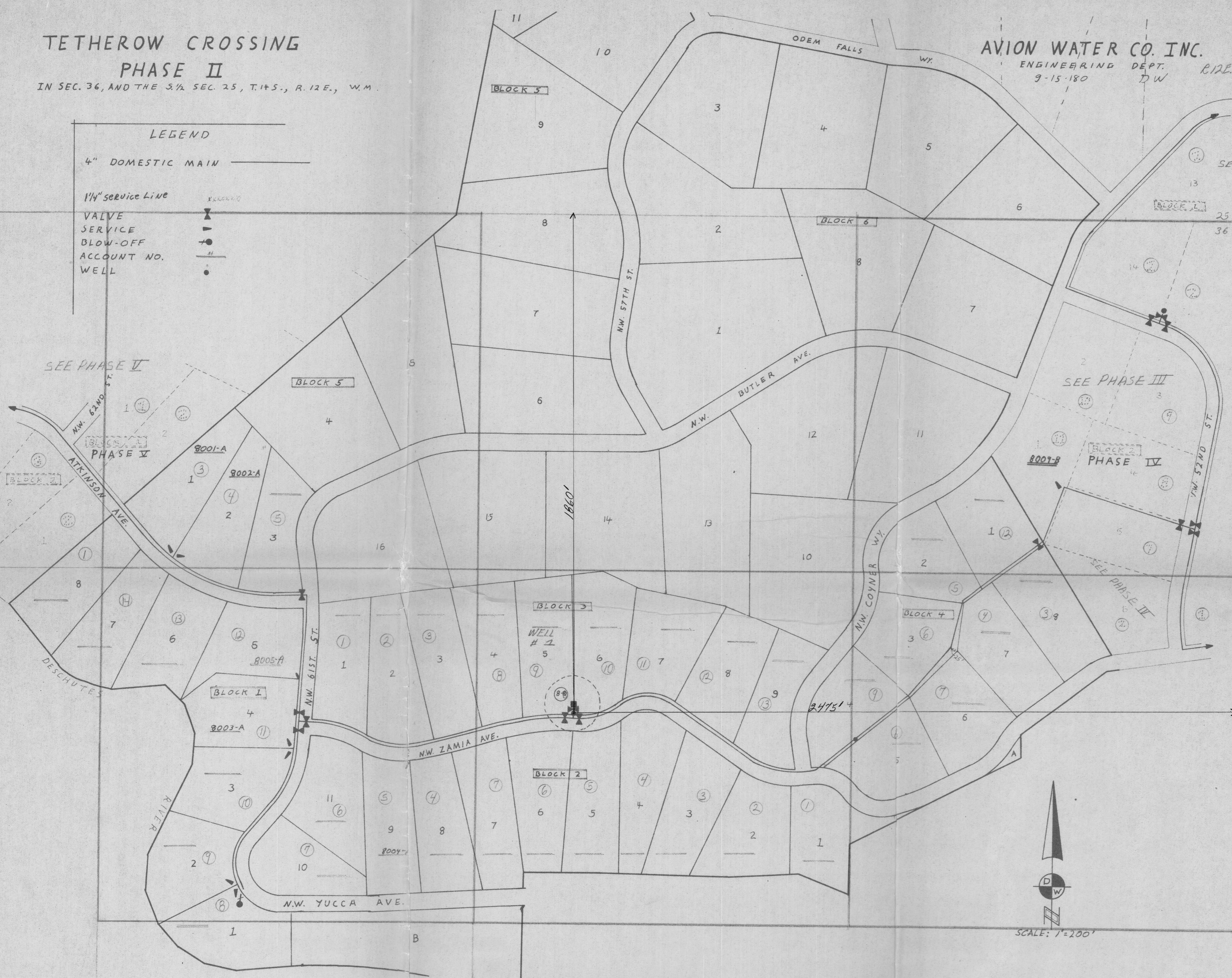
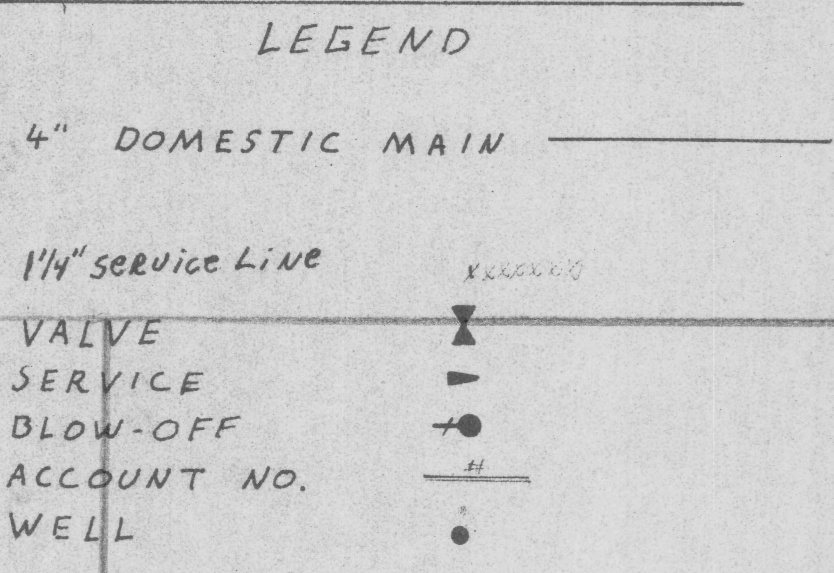
RECEIVED
 MAR 9 1983
 WATER RESOURCES DEPT.
 SALEM, OREGON

**TETHEROW CROSSING
PHASE II**

IN SEC. 36, AND THE S 1/4 SEC. 25, T.14S., R. 12E., W.M.

AVION WATER CO. INC.

ENGINEERING DEPT. DW R.12E. R.13E.
9-15-180

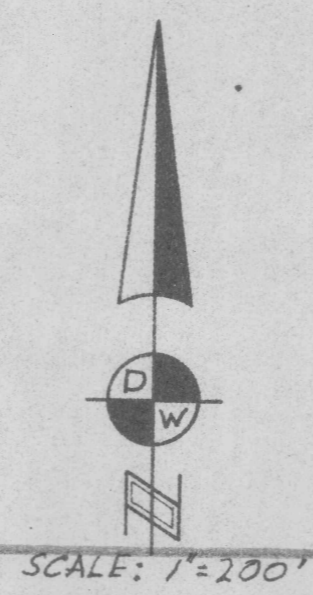


WELL # 2 IS LOCATED 1860' SOUTH AND 2475' WEST FROM THE NE CORNER OF SEC. 36 T.14.S R.12.E. BEING WITHIN THE SW 1/4 OF THE NE 1/4 OF SEC. 36 T.14S. R.12E. W.M. IN THE COUNTY OF DESCHUTES.

WELL # 1 IS LOCATED N 00° 31' 29" W 20 FEET FROM THE SOUTH LOT CORNER COMMON TO LOT 5 AND LOT 6 BLOCK 3 OF TETHEROW CROSSING PHASE II AS OF RECORD WITH COUNTY CLERK IN DESCHUTES COUNTY.

T.14S. R.12E. SEC. 36:
SE 1/4 NE 1/4 9 DOMESTIC USERS AT 2.5 GPM EACH
SW 1/4 NE 1/4 13 DOMESTIC USERS AT 2.5 GPM EACH
SE 1/4 NW 1/4 14 DOMESTIC USERS AT 2.5 GPM EACH
NE 1/4 NW 1/4 5 DOMESTIC USERS AT 2.5 GPM EACH

NOTE: DOMESTIC USES TO INCLUDE IRRIGATION OF LAWNS AND NON-COMMERCIAL GARDENS NOT TO EXCEED 1/2 ACRE PER FAMILY
: CIRCLED NUMBERS INDICATE POTENTIAL USERS. UNDERLINED NUMBERS INDICATE PRESENT USERS.
: QUARTER-QUARTERS APPLIED FOR INDICATED IN RED.



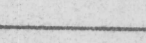



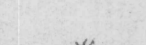
Application No. G-10371
Permit No. G 9999

RECEIVED FEB 9 1983 WATER RESOURCES DEPT. SALEM, OREGON
RECEIVED MAR 9 1983 WATER RESOURCES DEPT. SALEM, OREGON

TETHEROW CROSSING

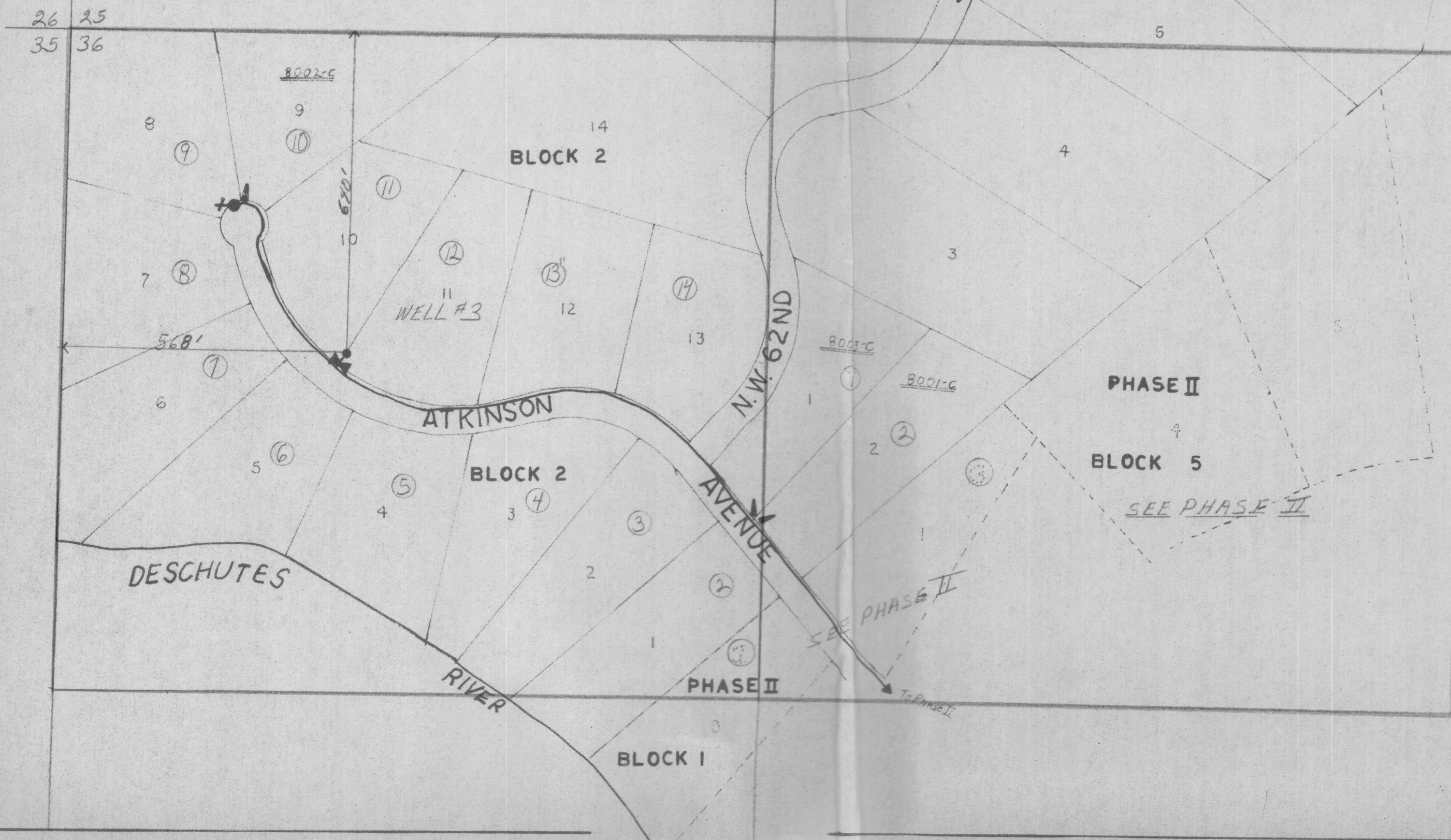
PHASE 5

LOCATED IN A PORTION OF THE E.1/2, S.W.1/4, SEC.25
AND N.W.1/4, SEC.36, T.14S, R.12E, W.M. DES. CO, ORE.

LEGEND
4" DOM. 
VALVE 
SERVICE 
WELL 
ACCOUNT NO. 



SCALE: 1" = 200'



Application No. G-10371
Permit No. G 9999

RECEIVED

MAR 9 1983

WATER RESOURCES DEPT.
SALEM, OREGON

RECEIVED

FEB 9 1983

WATER RESOURCES DEPT.
SALEM, OREGON

WELL #3 IS LOCATED 640 FEET SOUTH AND 568 FEET FROM THE NW CORNER OF SEC 36 THIS R 12E BEING WITHIN THE NW 1/4 NW 1/4 OF SEC 36 T 14S R 12E W.M. IN THE COUNTY OF DESCHUTES.

THIS R 12E SEC 36:
NW 1/4 NW 1/4 14 DOMESTIC USERS AT 2.5 GPM EACH

NOTE: CIRCLED NUMBERS INDICATE POTENTIAL USERS. UNDERLINED NUMBERS INDICATE PRESENT USERS.

DOMESTIC USES TO INCLUDE IRRIGATION OF LAWNS AND NON-COMMERCIAL GARDENS NOT TO EXCEED 1/2 ACRE PER FAMILY

QUARTER-QUARTERS APPLIED FOR INDICATED IN RED.

AVION WATER CO. INC.

ENGINEERING DEPT.
9-19-80 DW

TETHEROW CROSSING PHASE IV

IN THE W 1/4 SEC. 30 & 31, T. 14 S. R. 13 E., W.M.
AND THE E 1/4 SEC. 25 & 36, T. 14 S. R. 12 E., W.M.

LEGEND

4" DOMESTIC MAIN —————

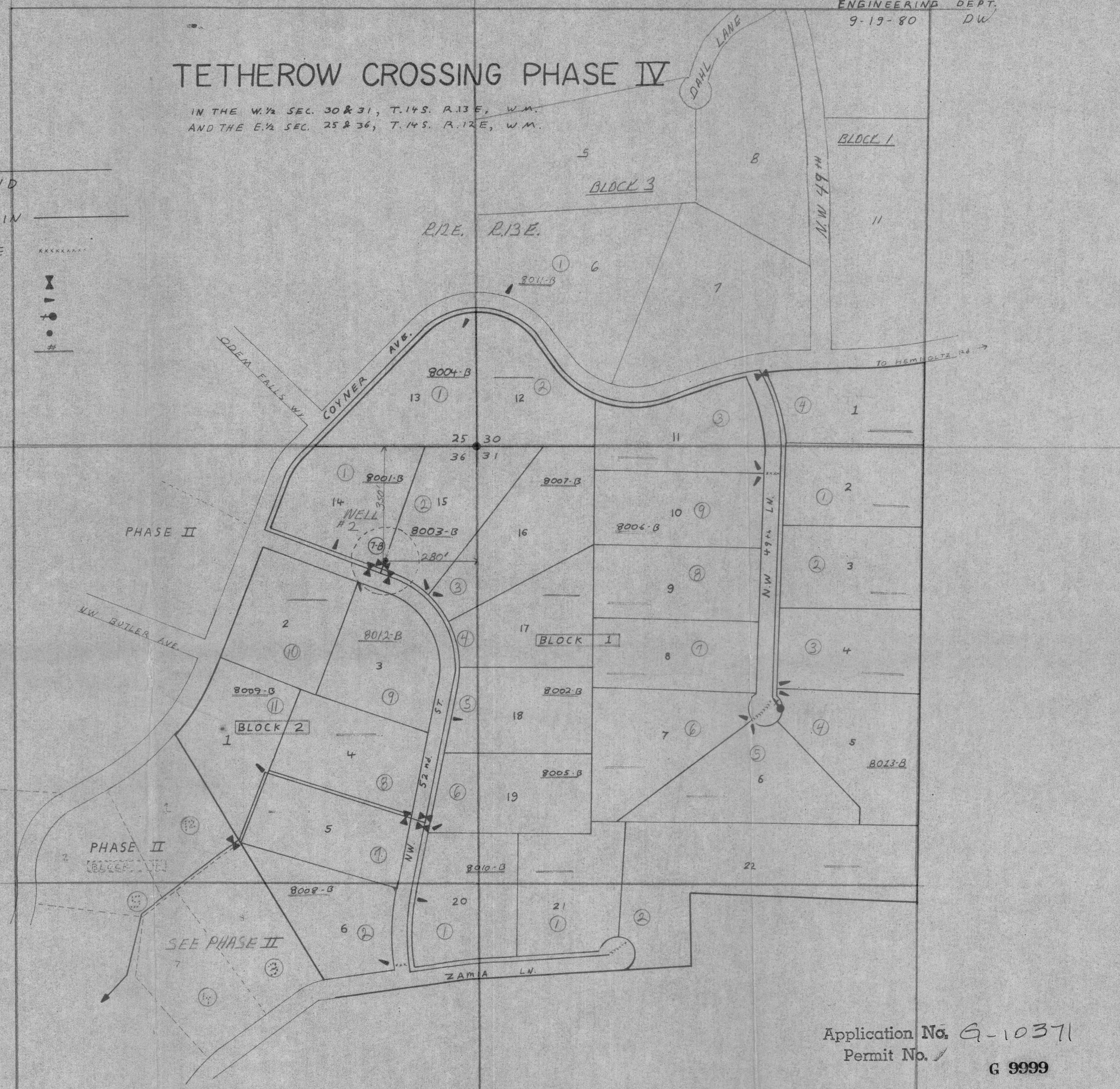
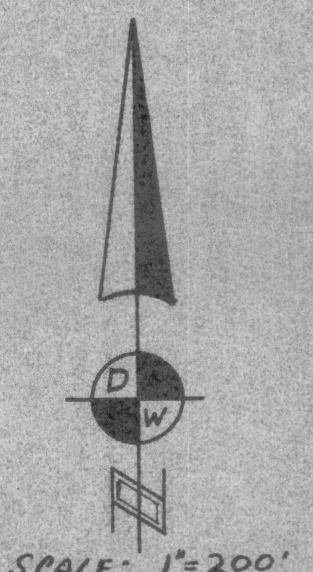
SERVICE LINE - - - - -

VALVE

SERVICE BLOW OFF

WELL

ACCOUNT NO. #



Application No. G-10371
Permit No. G 9999

RECEIVED
FEB 9 1983
WATER RESOURCES DEPT.
SALEM, OREGON

RECEIVED
MAR 9 1983
WATER RESOURCES DEPT.
SALEM, OREGON

WELL #2 IS LOCATED 35 FEET SOUTH AND 280 FEET WEST FROM THE NE. CORNER OF SEC 36 T. 14 S. R. 12 E. BEING WITHIN THE NE 1/4 NE 1/4 OF SEC 36 T. 14 S. R. 12 E. W.M. IN THE COUNTY OF DESCHUTES.

T. 14 S. R. 12 E. SEC 30:
SW 1/4 SW 1/4 4 DOMESTIC USERS AT 2.5 GPM EACH

T. 14 S. R. 13 E. SEC 31:
NW 1/4 NW 1/4 9 DOMESTIC USERS AT 2.5 GPM EACH
SW 1/4 NW 1/4 2 DOMESTIC USERS AT 2.5 GPM EACH

T. 14 S. R. 12 E. SEC 25:
SE 1/4 SE 1/4 1 DOMESTIC USER AT 2.5 GPM

T. 14 S. R. 12 E. SEC 36:
NE 1/4 NE 1/4 12 DOMESTIC USERS AT 2.5 GPM EACH

NOTE: DOMESTIC USE TO INCLUDE IRRIGATION OF LAWNS AND NON-COMMERCIAL GAR DENS NOT TO EXCEED 1/2 ACRE PER FAMILY.
• CIRCLED NUMBERS INDICATE POTENTIAL USERS. UNDERLINED NUMBERS INDICATE PRESENT USERS.
• QUARTER-QUARTERS APPLIED FOR INDICATED IN RED.