

SCALE: 2" = 1 MILE

T 34 S

T 35 S

R. 9 E.

MAHOGAN Y
RIDGE
RESERVOIR

SE 1/4 NW 1/4 SEC. 33

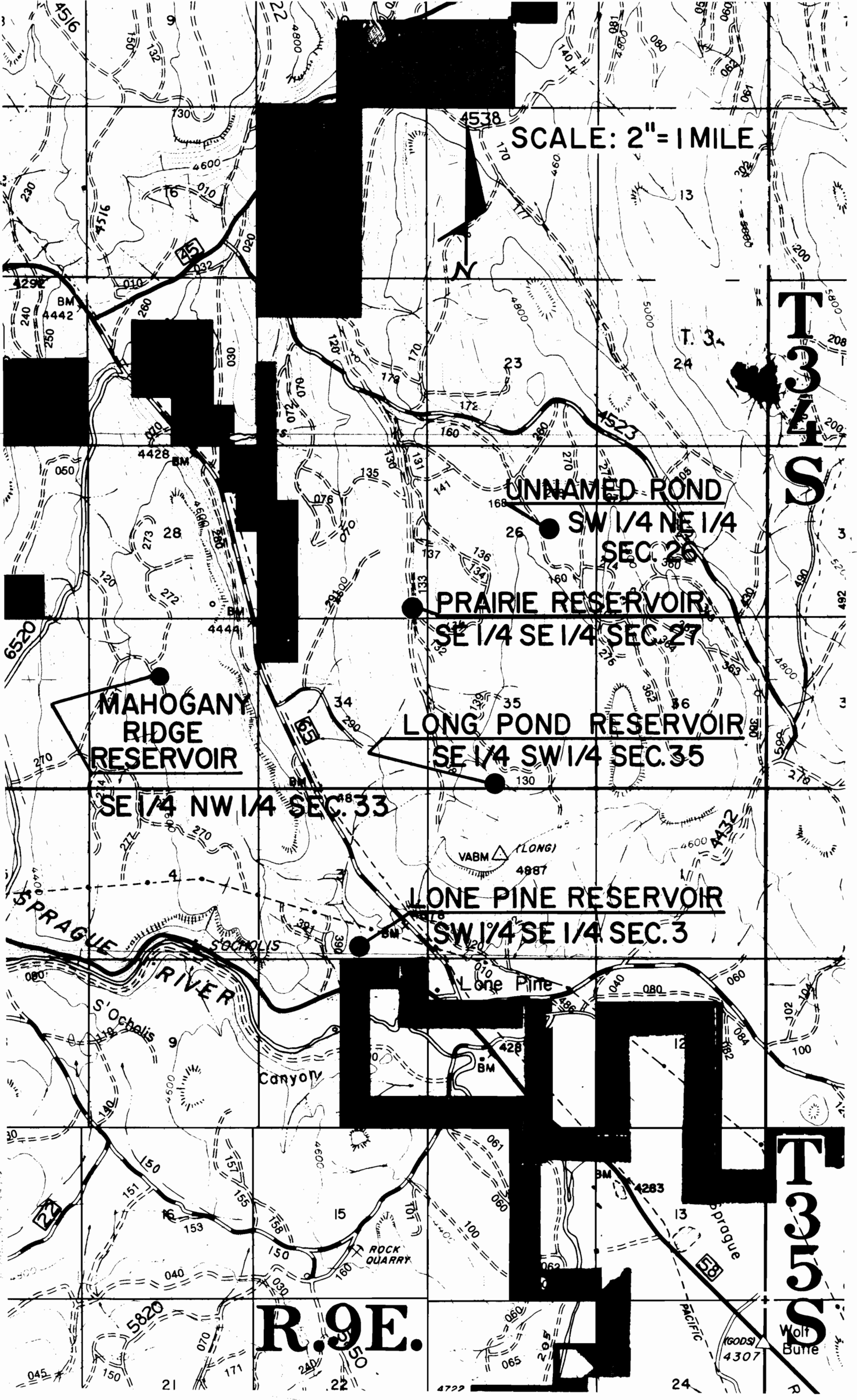
PRAIRIE RESERVOIR
SE 1/4 SE 1/4 SEC. 27

LONG POND RESERVOIR
SE 1/4 SW 1/4 SEC. 35

LONE PINE RESERVOIR
SW 1/4 SE 1/4 SEC. 3

UNNAMED ROND
SW 1/4 NE 1/4
SEC. 26

Section No. 27, T-34S, R-9E



Map 2