

1/4 COR. N 89° 50' E 1306.08' 1/16 COR.

NORTH 1152.00'



scale 1" = 200'

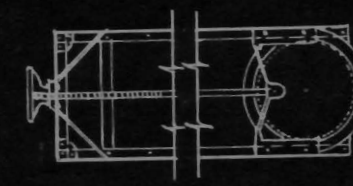


SURVEY OF
ENGLER-HUSON CO. PROPERTY
& MILL POND

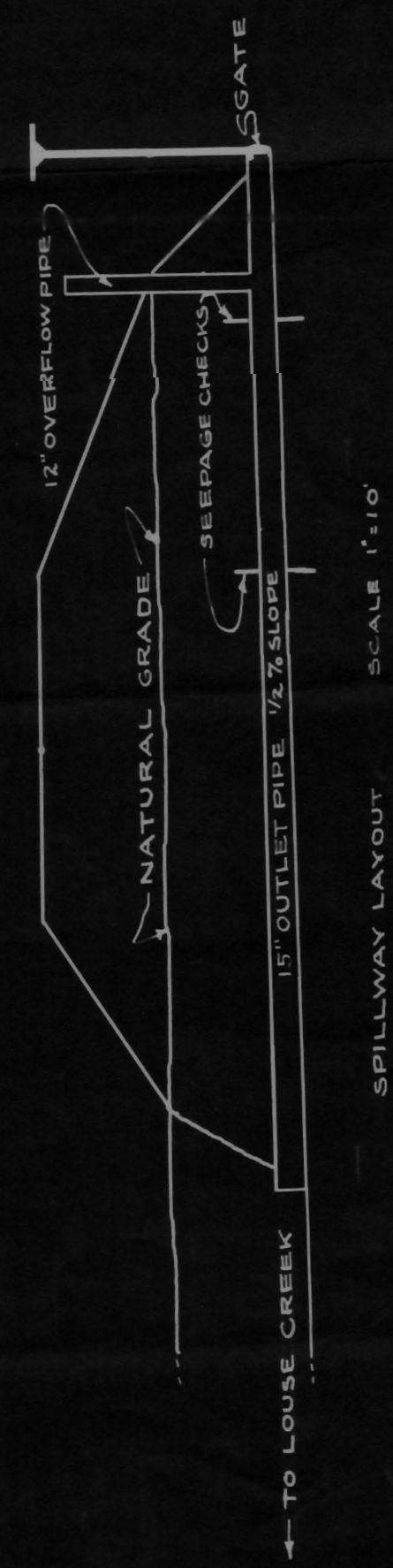
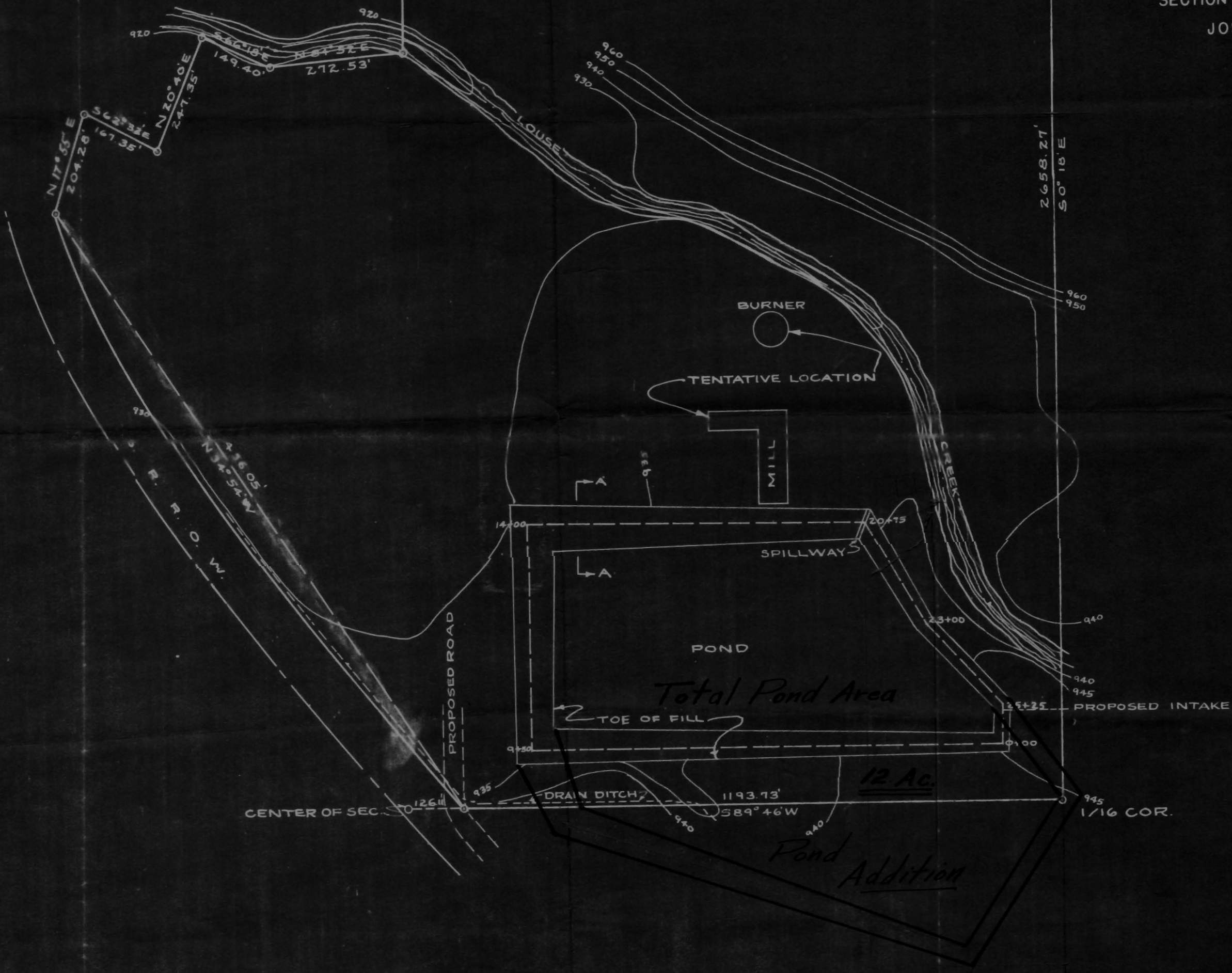
SECTION 21, TWP. 35 S., R 6 W., W.M.

JOSEPHINE COUNTY, ORE.

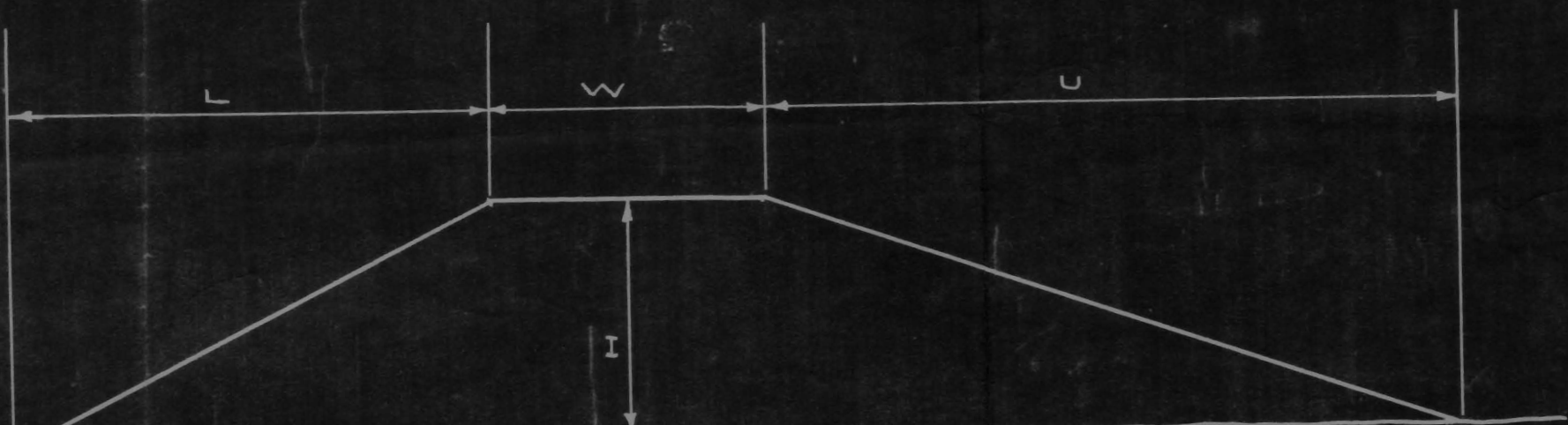
OCTOBER 16, 1950



GATE DETAIL



SCALE 1" = 10'



SECTION	A-A
L	28.4
W	16.0
H	41.1
H	14.9
SCALE 1" = 10'	

Application No. R-25419
Permit No. 25461
R-1141