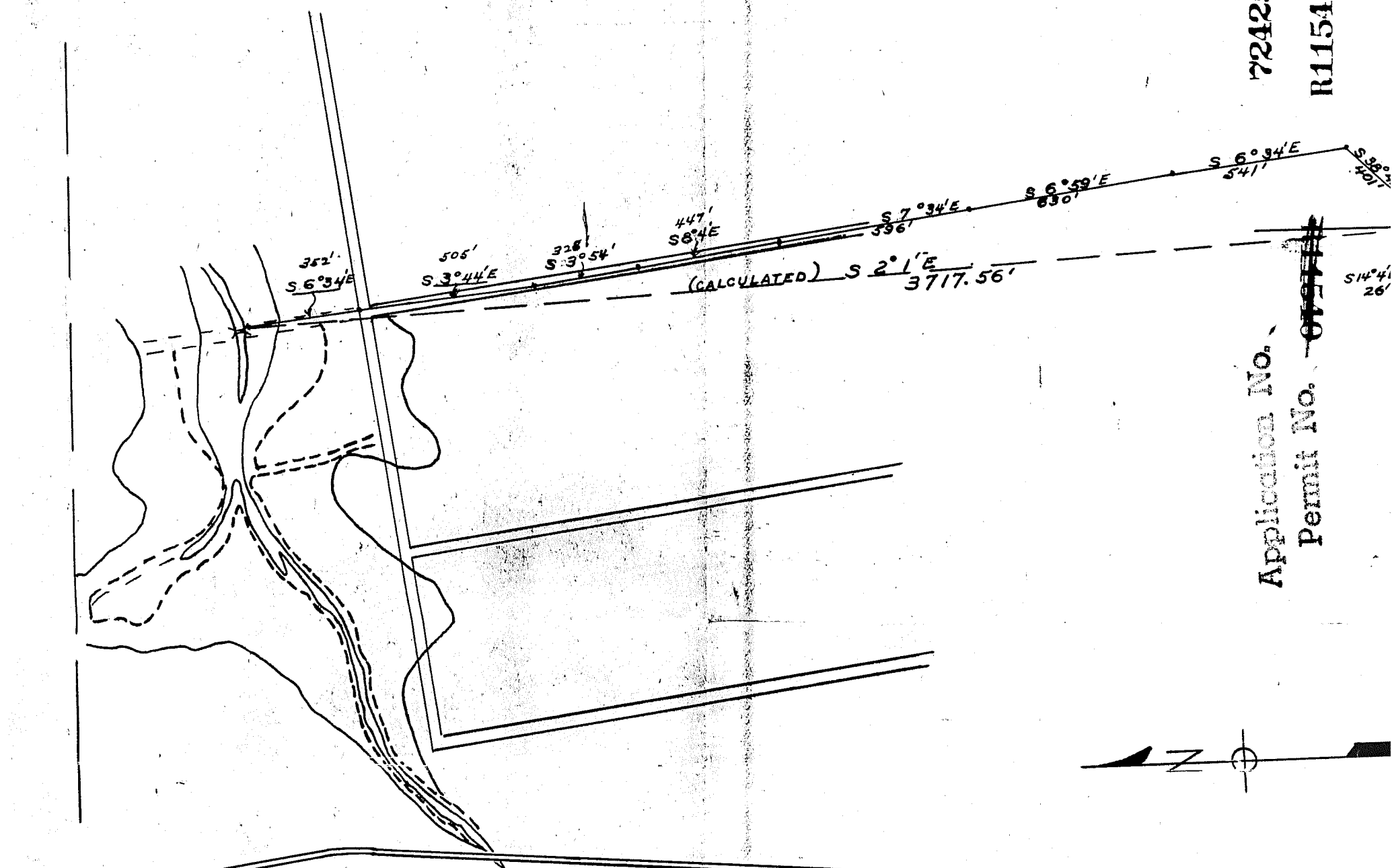


George J. Kernan, of Portland, Oregon,
do hereby certify that this map was made from
notes taken during an actual survey made by
me (or under my immediate supervision) on
May 29, 1952; that the monument shown on this
map consisting of iron pipe is 3717.56' S 2° 1' E
from S. E. corner, Section 7, T 10 S, R 4 W.

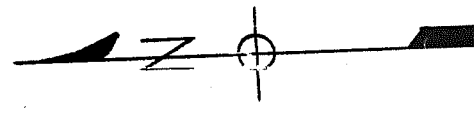
George J. Kernan

RECEIVED
R-4-W JUN 01 1952
WATER RESOURCES DEPT
SALEM, OREGON

72425
R11540



Application No. ~~07244~~
Permit No. ~~07244~~

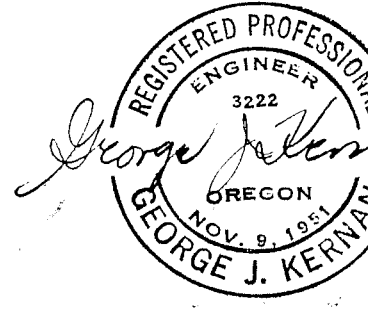


U.S. 99 W.

POLK
BENTON

APPROX. 6.3 ACRES FLOODED.
APPROX. 7.8 ACRE FEET OR 2,541,630. gal.

RECEIVED
JUL 24 1952
STATE ENGINEER
SALEM, OREGON



OREGON GAME COMMISSION No. 101