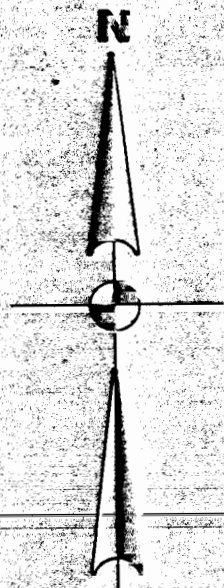
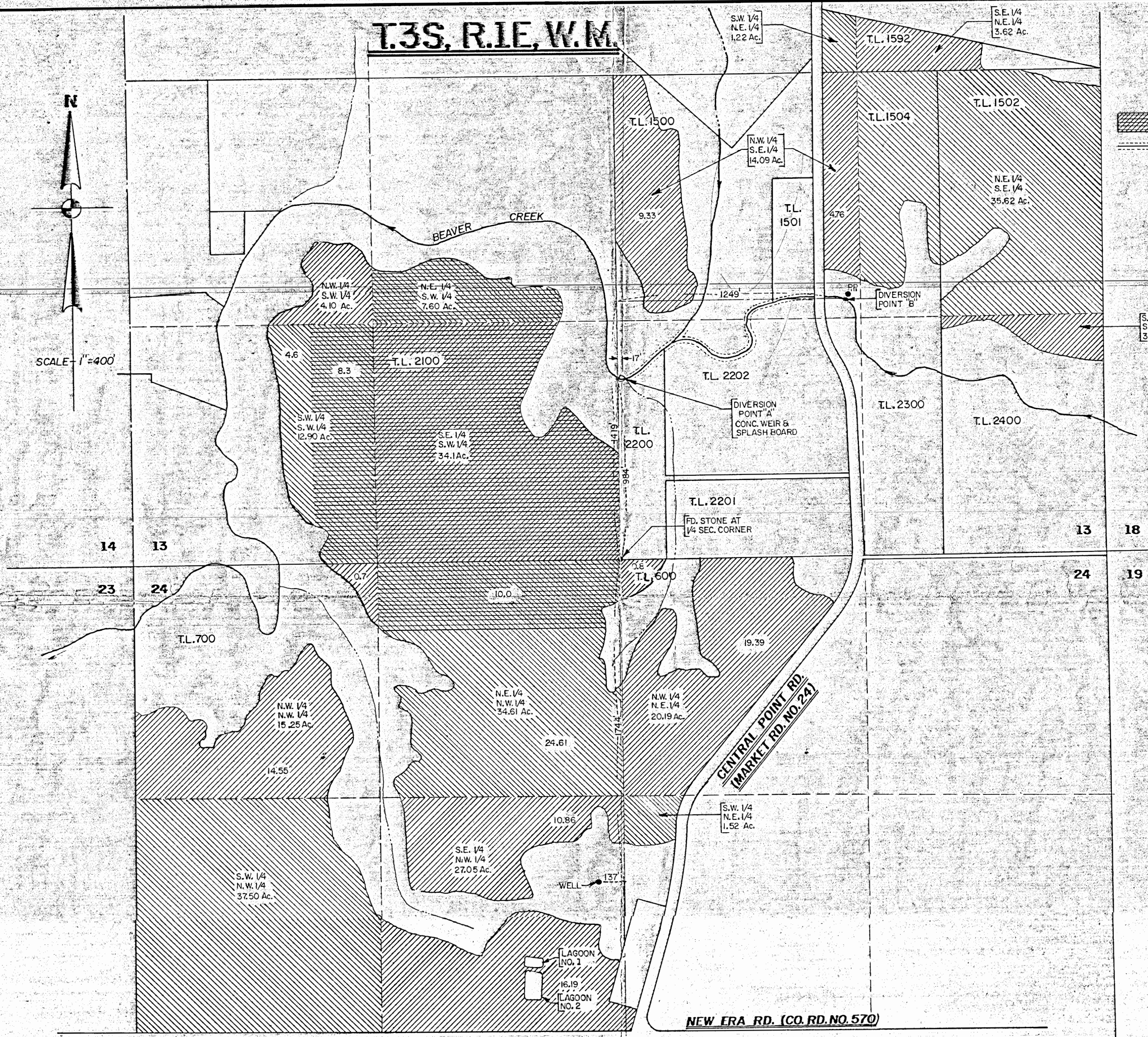


T.3S, R.1E, W.M.



SCALE: 1"=400'



**LEGEND**

PERMIT NO. 11975 NOV. 27, 1935

INTERMITTENT IMPOUNDMENT

SECTION 13, T.3S, R.1E, W.M.

S.E. 1/4 - N.E. 1/4	3.62 Ac.
S.W. 1/4 - N.E. 1/4	1.22 Ac.
N.W. 1/4 - S.W. 1/4	4.10 Ac.
N.W. 1/4 - S.E. 1/4	14.09 Ac.
N.E. 1/4 - S.E. 1/4	35.62 Ac.
S.E. 1/4 - S.E. 1/4	3.05 Ac.
S.W. 1/4 - S.W. 1/4	4.60 Ac.
<b>SUB TOTAL</b>	<b>66.30 Ac.</b>

SECTION 24, T.3S, R.1E, W.M.

N.W. 1/4 - N.E. 1/4	20.19 Ac.
N.E. 1/4 - N.W. 1/4	24.61 Ac.
N.W. 1/4 - N.W. 1/4	15.25 Ac.
S.W. 1/4 - N.W. 1/4	37.50 Ac.
S.E. 1/4 - N.W. 1/4	27.05 Ac.
S.W. 1/4 - N.E. 1/4	1.52 Ac.
<b>SUB TOTAL</b>	<b>126.12 Ac.</b>

TOTAL AREA 192.42 Ac.

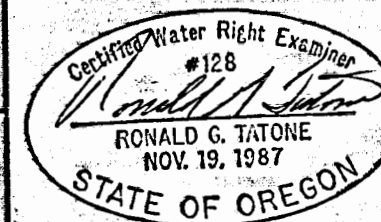
RECEIVED

SEP - 5 1990

WATER RESOURCES DEPT.  
SALEM, OREGON

Application No. 70621, R-70622, R-70623  
Permit No. R11550  
6-12225  
permit R11595

**ZAROSINSKI-TATONE ENGINEERS, INC.**  
3737 S. E. EIGHTH AVE. PORTLAND, ORE. 97202  
PH: (503) 235-8795



**STAEHEL Y BRO'S DAIRY**

SURFACE WATER, GROUND WATER  
AND  
RESERVOIR APPLICATION MAP

1592-1

DRAWN: R.R.	CHECKED: R.G.T.
SCALE: 1"=400'	DATE: 8-16-90