

RECEIVED

App # R70270

Permit # R11583

AUG 13 1992

Map for: Tom Schmidt

WATER RESOURCES DEPT.

Location: The N.E. 1/4 & N.W. 1/4 & S.E. 1/4 & S.W. 1/4 of the N.W. 1/4 and also the N.W. 1/4 & N.E. 1/4 & S.E. 1/4 of the S.W. 1/4 and also the N.W. 1/4 of the S.E. 1/4 of Section 6, T.5 S., R.4 W., W.M., and also the S.E. 1/4 of the N.E. 1/4 and the N.E. 1/4 of the S.E. 1/4 of Section 1, T.5 S., R.5 W., W.M., J. A. Cornwall D.L.C No.64, Yamhill County, Oregon.

Tax Lot:

LEGEND:

Application No.

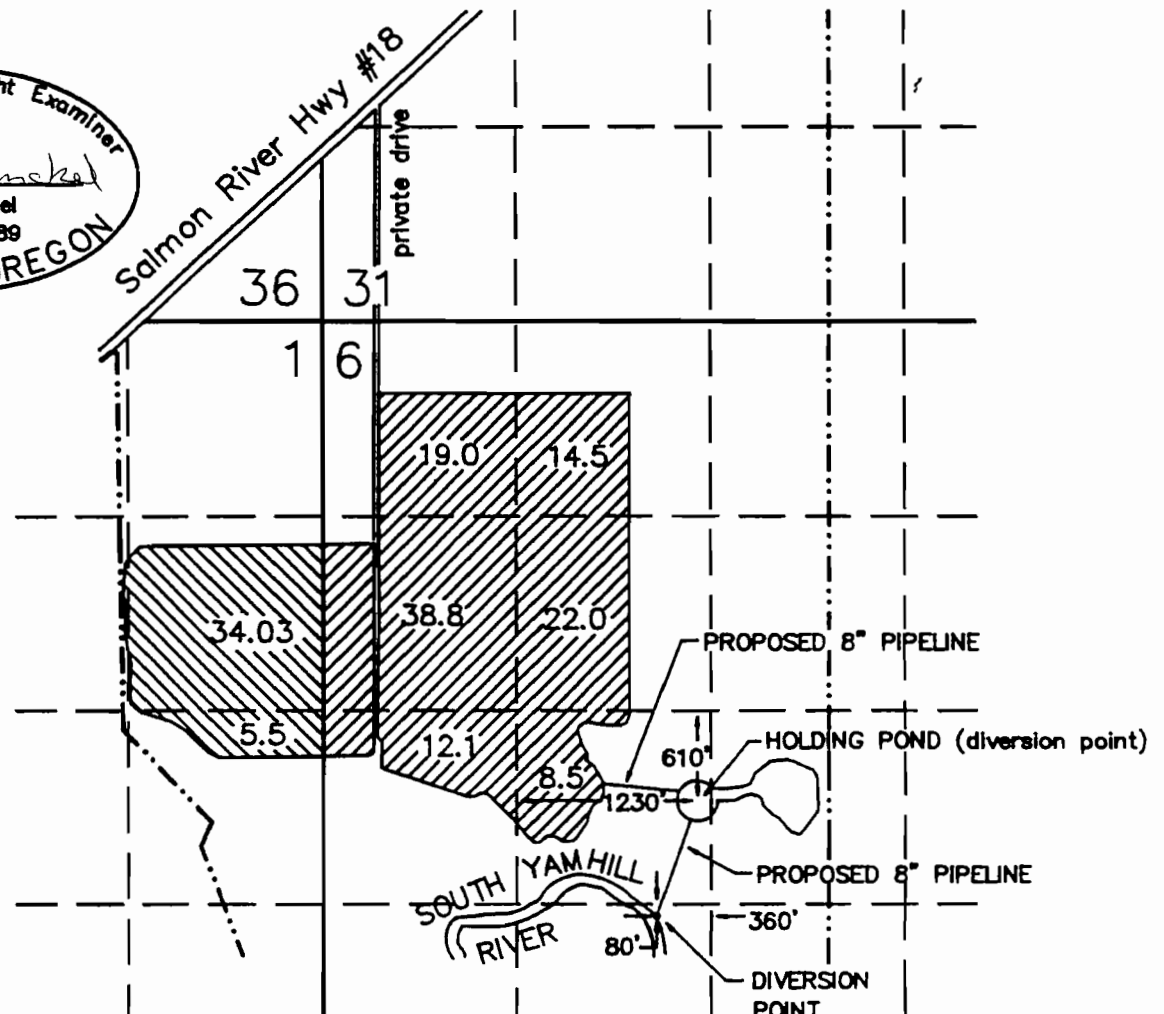
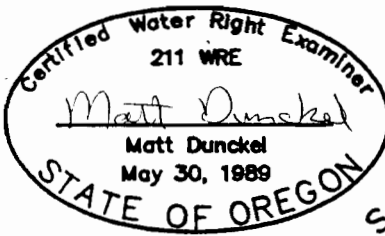
----- = Property line

Date : 7 July 1992

———— = Section line

By : Matt Dunckel & Assoc.
19010 Baker Creek Rd.
McMinnville, Oregon 97128
Phone : 472-7904

- - - - - = "40" line



Scale : 1" = 1320'

(See orig. map for dist. in feet for POD, from #685 NW Corner, sect. 6.)