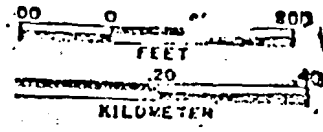
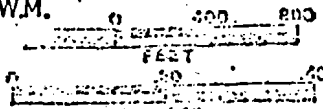


THIS MAP WAS PREPARED FOR ASSESSMENT PURPOSE ONLY.

SECTION 18 T.02N. R.10E. WM.  
HOOD RIVER COUNTY

SCALE 1:9600.



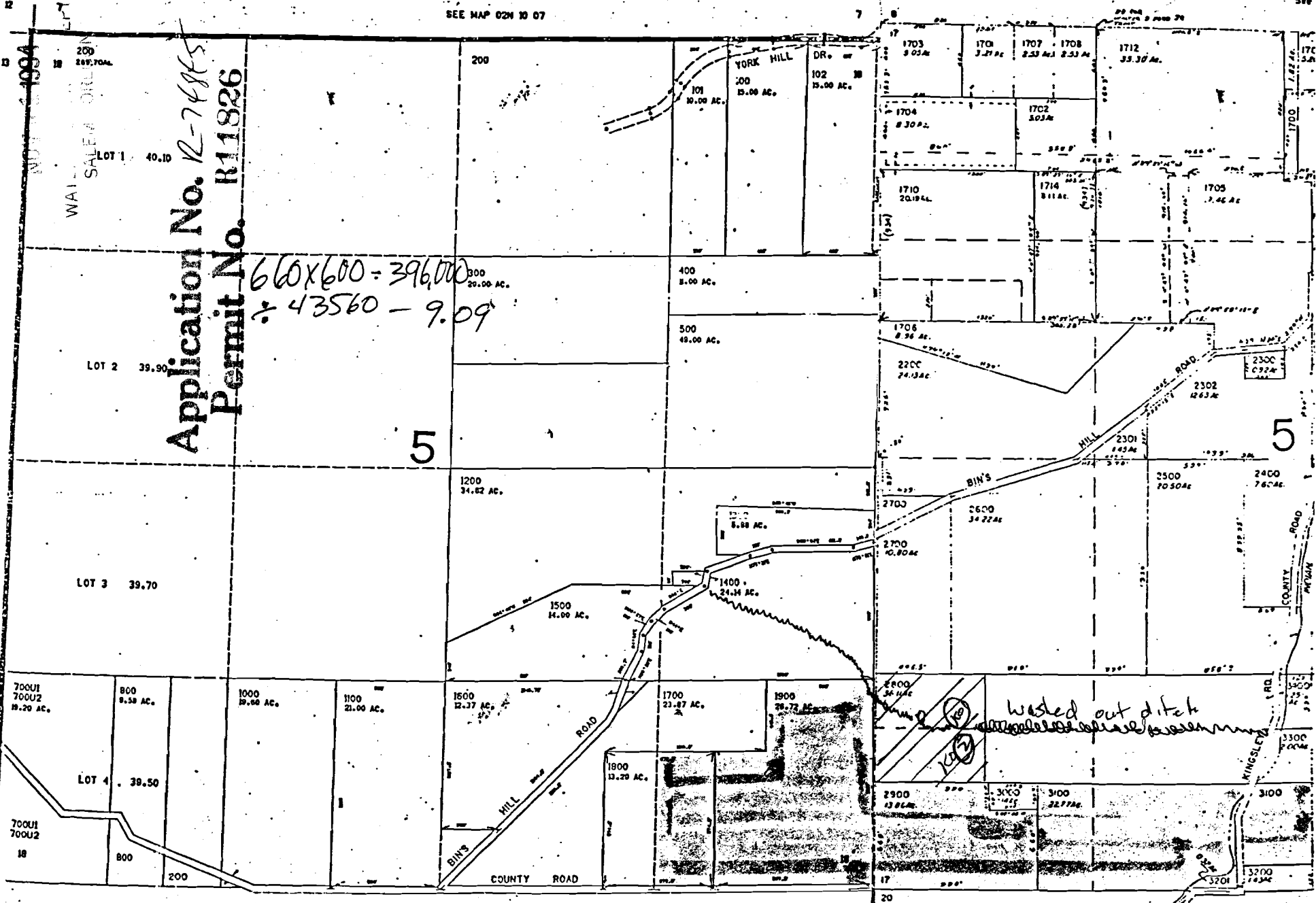
SEE MAP 02N 10 07

See

RECEIVED

Application No. R-7485  
Permit No. R1826

$660 \times 600 = 396,000$   
 $\div 43560 = 9.09$



SEE MAP 02N 09

See Mo

No Final Proof Map Available  
See Permit Map  
through  
OWRD WrisQuery page

*All Scanned Documents*