

RECEIVED

36 6 20-3
& INDEX

AUG - 1 1994

WA. SURVEY DEPT.
SALEM, OREGON

SW1/4 SEC. 20 T.36S. R. 6W. W.M.
JOSEPHINE COUNTY

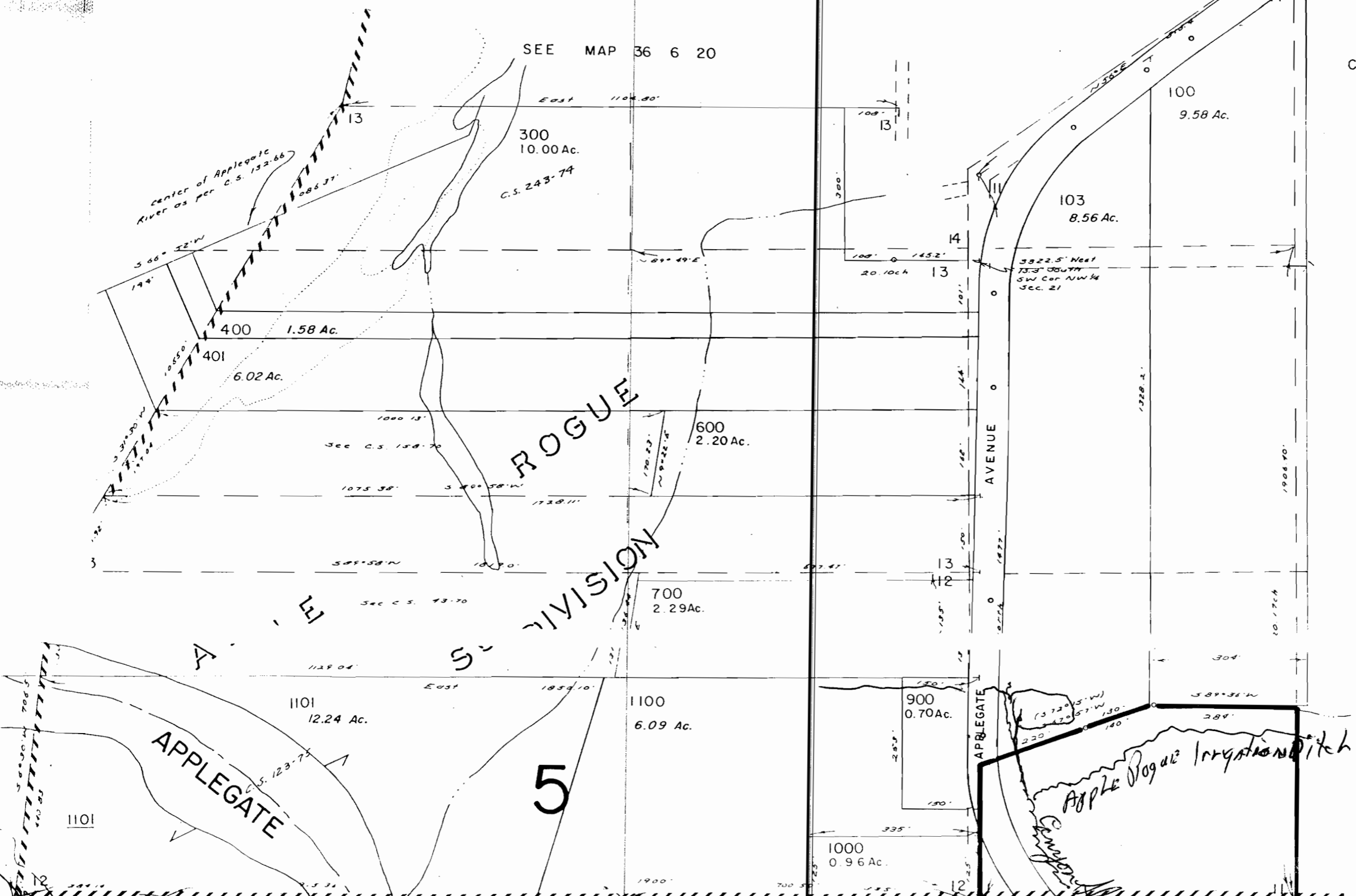
Application No. *2-74393*
Permit No. **R11900**

1" = 200'

SEE MAP 36 6 20

CANCELLED T.L.

200
101
102



Center of Applegate River as per C.S. 152-66

ROGUE DIVISION

AVENUE

APPLE ROGUE Irrigation Ditch

5

APPLEGATE

300
10.00 Ac.
C.S. 243-74

400
1.58 Ac.
401
6.02 Ac.

600
2.20 Ac.

700
2.29 Ac.

900
0.70 Ac.

1000
0.96 Ac.

103
8.56 Ac.

100
9.58 Ac.

1101
12.24 Ac.

1100
6.09 Ac.

1101

12
1101
1102

13

14

13

13

12

12

12

13

401

3

12

110

110

110

110

110

110

110

110

110

110

110

110

110

110

110

110

110

110

110

110

110

110

110

110

110

110

110

110

110

110

Final Proof Maps

available through

OWRD WrisQuery page

[View all scanned documents](#)