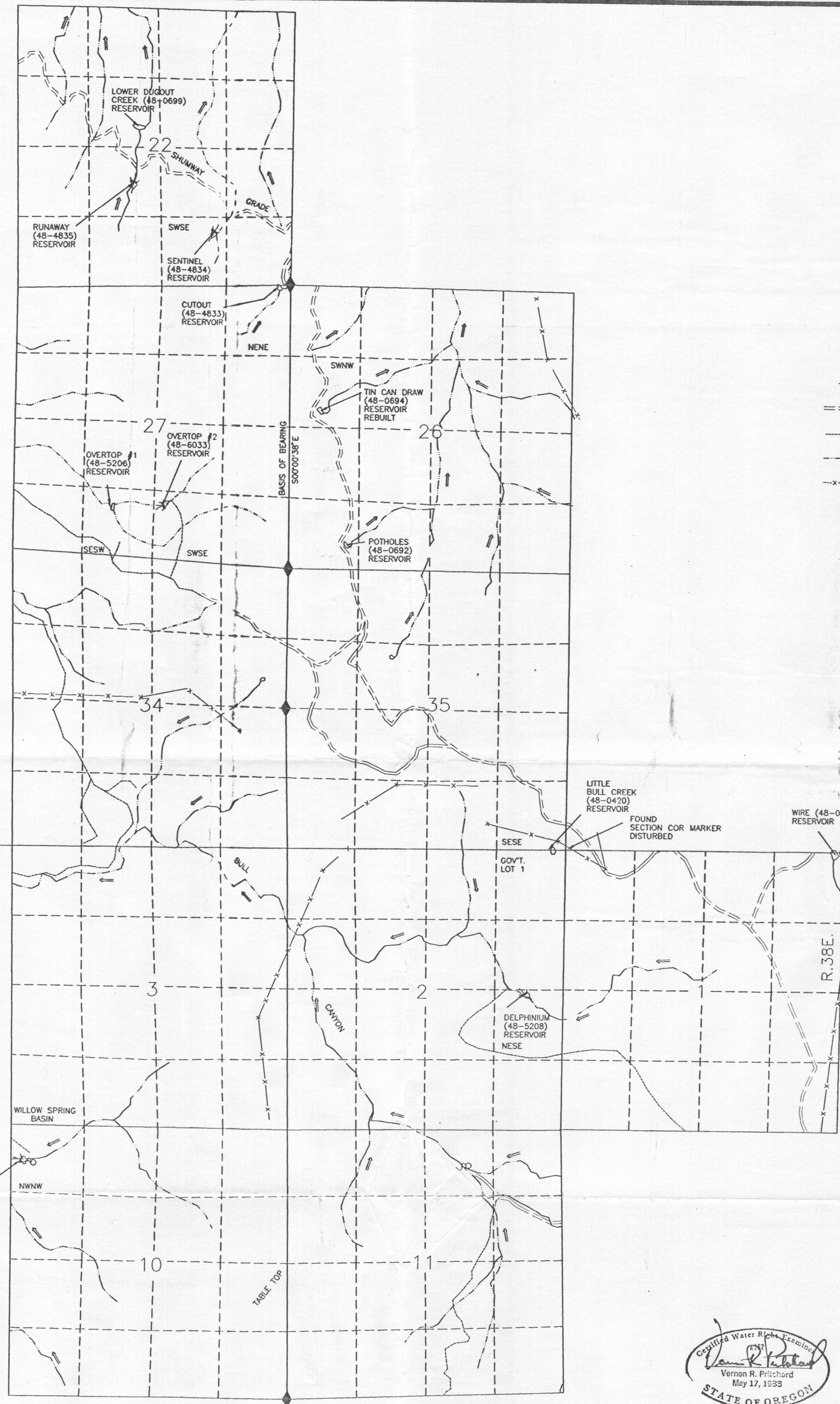


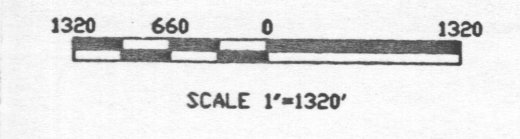
APPLICATION MAP FOR PERMIT TO CONSTRUCT RESERVOIRS

SITUATED ON U.S.G.S. QUAD - JUNTURA, OREG. - 7 1/2'

RESERVOIR NAME & JDR	RESERVOIR LOCATION	TIE	LOCATION OF TIE	TIE	LOCATION OF TIE
SENTINEL (48-4834) RESERVOIR	SW1/4 SE1/4 SECTION 22 T.21S., R.38E., W.M.	S55°00'22"E 1796.87'	SE COR SECTION 22 T.21S., R.38E., W.M.		
OVERTOP #2 (48-6033) RESERVOIR	SW1/4 SE1/4 SECTION 27 T.21S., R.38E., W.M.	S61°22'15"E 2794.58'	SE COR SECTION 27 T.21S., R.38E., W.M.	N31°04'25"E 4750.46'	NE COR SECTION 27 T.21S., R.38E., W.M.
OVERTOP #1 (48-5206) RESERVOIR	SE1/4 SW1/4 SECTION 27 T.21S., R.38E., W.M.	S71°41'37"E 3594.11'		N38°33'45"E 5472.23'	
DELPHINIUM (48-5208) RESERVOIR	NE1/4 SE1/4 SECTION 2 T.22S., R.38E., W.M.	N83°57'48"W 25521.93'		N65°28'16"E 6632.56'	NE COR SECTION 1 T.22S., R.38E., W.M.
WILLOW BASIN SPRING (48-5207) RESERVOIR	NW1/4 NW1/4 SECTION 10 T.22S., R.38E., W.M.	N69°17'40"W 16912.26'		S48°38'12"E 6854.19'	



- LEGEND**
- RESERVOIR ON U.S.G.S. QUAD
 - RESERVOIR NOT ON QUAD
 - === ROAD
 - TRAIL
 - - - CHANNEL
 - x-x- FENCE
 - ◆ FD SEC COR



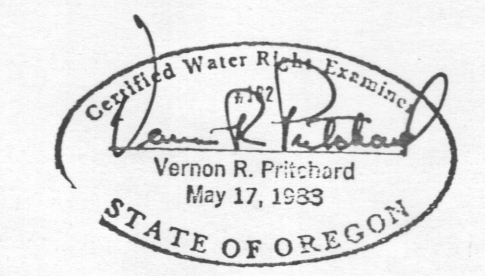
RECEIVED
JAN 29 1996
WATER RESOURCES DIVISION
SALEM, OREGON

FOUND GLO STONE NW COR SECTION 6 T. 22S., R.38E., W.M.

T.21S.
T.22S.

FOUND GLO STONE NE COR SECTION 1 T.22S., R.38E., W.M.

THIS MAP IS FOR THE PURPOSE OF LOCATING A WATER RIGHT AND IS NOT INTENDED TO PROVIDE LEGAL DIMENSIONS FOR LOCATION OF PROPERTY BOUNDARIES.



UNITED STATES DEPARTMENT OF THE INTERIOR
BUREAU OF LAND MANAGEMENT
DIVISION OF OPERATIONS VALE DISTRICT

RESERVOIRS SITUATED ON
U.S.G.S. QUAD-JUNTURA, OREG.-7 1/2'

DESIGNED: _____
REVIEWED: *Vernon R. Pritchard*
APPROVED: *Vernon R. Pritchard*
CHIEF, BRANCH OF ENGINEERING

DRAWN: c9 SCALE: 1"=1320'
DATE: 09/19/94 SHEET 1 OF 1
DRAWING NO: OR-03-9172.45-706

ACAD RELEASE 11
DWG FILE: JUNTURA.DWG