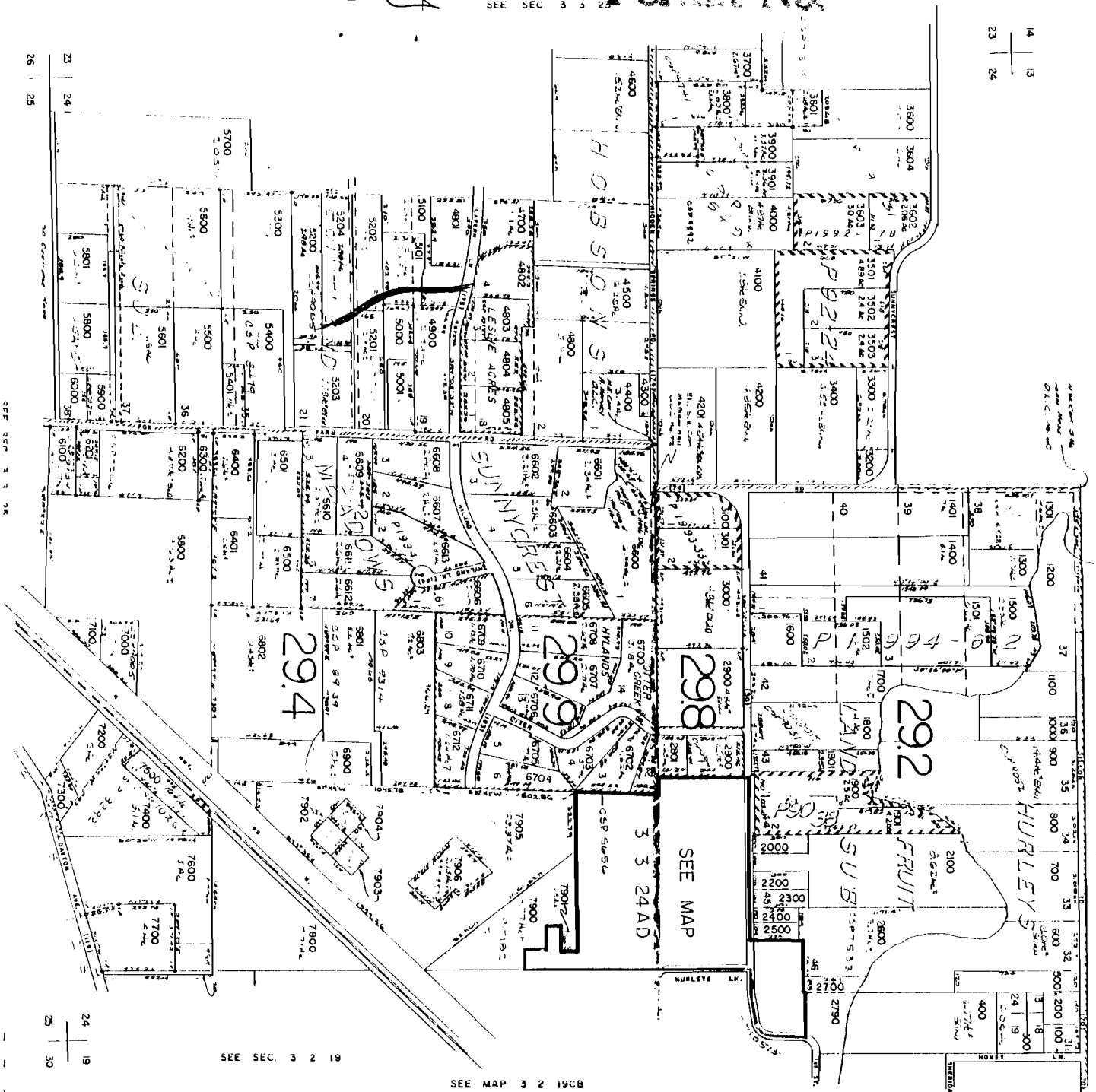


We are # 5101
stream runs
through lower
part of property
(marked in pink)

Permit No. 11-1995
2018

WATER RESOURCES DEPT.
SALEM, OREGON
MAR 1 8 1996

RECEIVED



SEE SEC 3 2 19

SEE MAP 3 2 19CB

SEC 3 2 19

26 | 25

SEE SEC 3 3 26

24 | 19
25 | 30