

SECTION 2 TIN R2W W.M.

WASHINGTON COUNTY OREGON

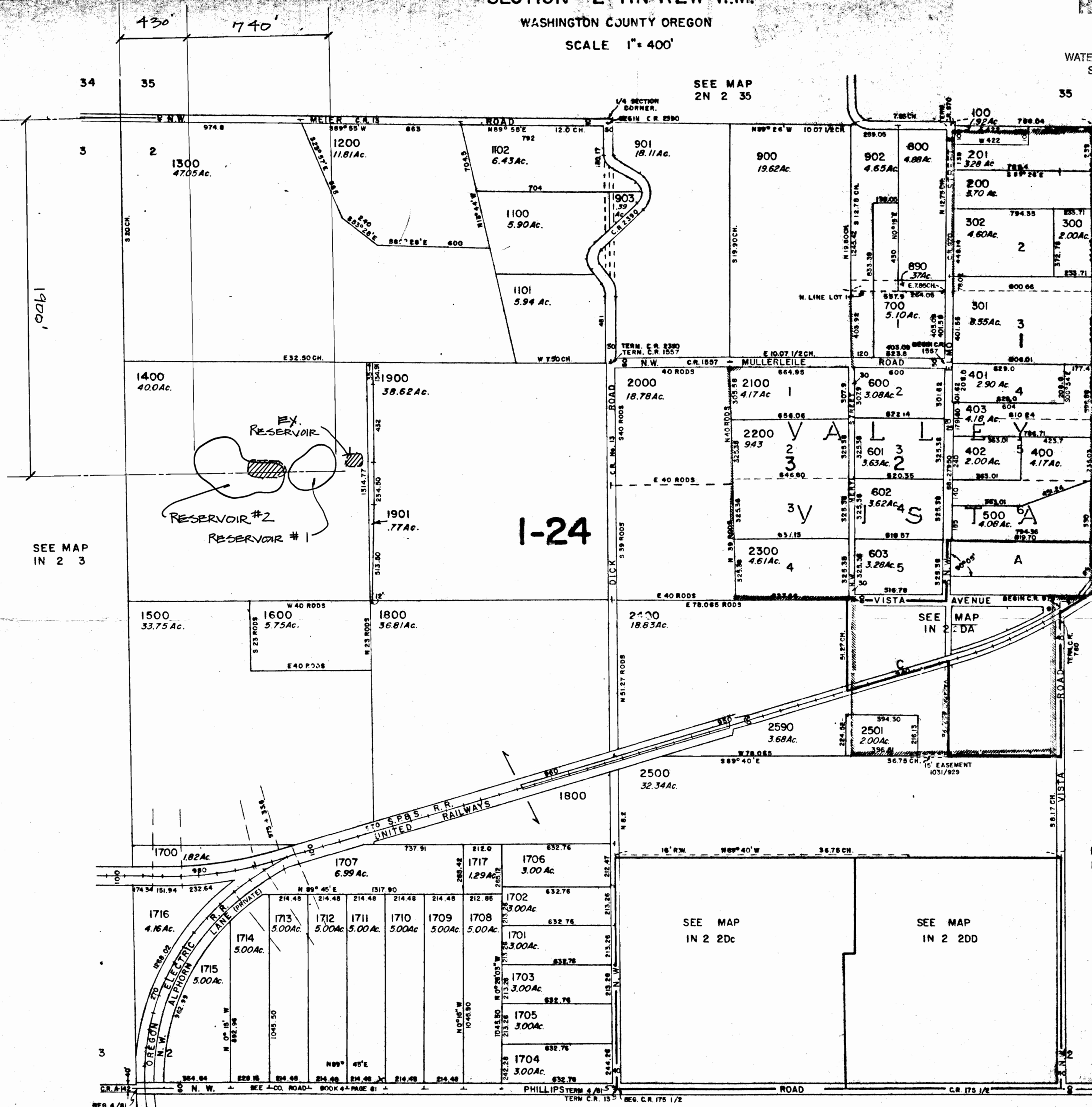
SCALE 1" = 400'

RECEIVED

IN 2

AUG 20 1906

WATER RESOURCES DEPT.
SALEM, OREGON



Application No. 75065
Permit No. R12015

CANCELLED TAX LOTS
801, 1000, 990, 2600 Through
2001, 904.

FOR ASSESSMENT PURPOSES ONLY
DO NOT RELY ON FOR ANY OTHER USE

WASHINGTON COUNTY
DEPT. OF LAND AND
ASSESSMENT & TAXATION

FOR ASSESSMENT PURPOSES
ONLY. DO NOT RELY ON
FOR OTHER USE

SEE MAP
IN 2 11

WATER RIGHTS APPLICATIONS

#R-75065
#S-75066