

RECEIVED

MAY 31 1996

WATER RESOURCES DEPT.
SALEM, OREGON

This map was prepared for
assessment purpose only

Application No. R-81190

T.3S. R.46E.W.M.
WALLOWA COUNTY

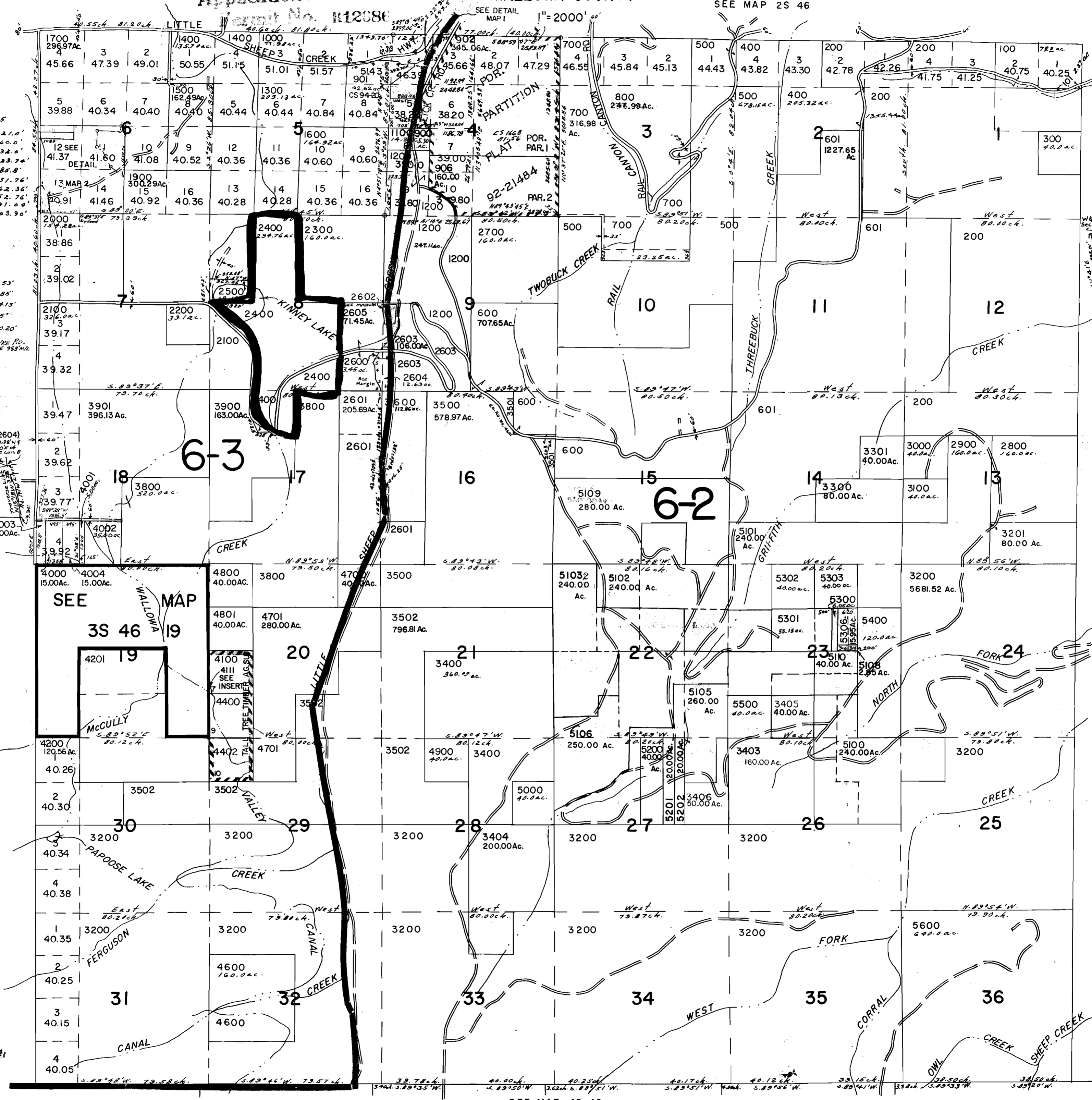
3S 46

SEE MAP 2S 46

- Sec. # 45
- 1- East 122.10'
 - 2- S. 52° 15' W. 660.0'
 - 3- S. 30° W. 132.6'
 - 4- S. 85° W. 223.74'
 - 5- S. 58° W. 88.8'
 - 6- S. 83° W. 551.76'
 - 7- N. 51° W. 162.36'
 - 8- N. 87° W. 452.76'
 - 9- S. 80° 45' W. 491.04'
 - 10- S. 83° W. 603.90'

- TL 2604
Sec. 8-9
- 1- S. 88° 10' W. 21.53'
 - 2- N. 9° 17' W. 42.85'
 - 3- N. 38° 07' W. 314.13'
 - 4- N. 11° 10' W. 335'
 - 5- N. 30° 47' W. 170.20'
 - 6- Along Forest Service Rd. out of line 515' 18" E 753' 11" S
 - 7- S. 88° 20' W. 479'

- DETAIL
TL 2600
(After Seg. of 2604)
1" = 400'
- 1- 58° 32' W. 120.19'
 - 2- 120.19'
 - 3- 58° 32' W. 120.19'
 - 4- 120.19'



- CANCELLED NO'S
- 4300
 - 4500
 - 5305
 - 1701
 - 4101 THRU
 - 4110
 - 4401
 - 3601
 - 3700
 - 1804
 - 3401
 - 5107
 - 5104
 - 5304

- INSERT
Sec. 8-9
1" = 400'
- 2602
 - 5.27 ac.
- See V.H. Russell
Survey 11-9-63

SEE MAP 3S 47

- INSERT
SEC. 20
PARCEL 4111
= 200
- 4111
 - 22 ac.

RECEIVED

FEB 20 1996

WALLOWA CO. PLANNING DEPT.

3S 46

SEE MAP 4S 46

6 5
7 8

T1416

RECEIVED

MAY 31 1998

WATER RESOURCES DEPT
SALEM, OREGON

5
8

Application No. R-31190
R12080
Permit No.

T680

7 8
18 17

T1373

McLu 14 Cr

8
1

6 5
7 8

T1416

RECEIVED
MAY 31 1993
WATER RESOURCES DEPT
SALT LAKE COUNTY

Application No. R-81190
Permit No. R12086

7 8
18 17

T680

M. Sully Cr.

T1573