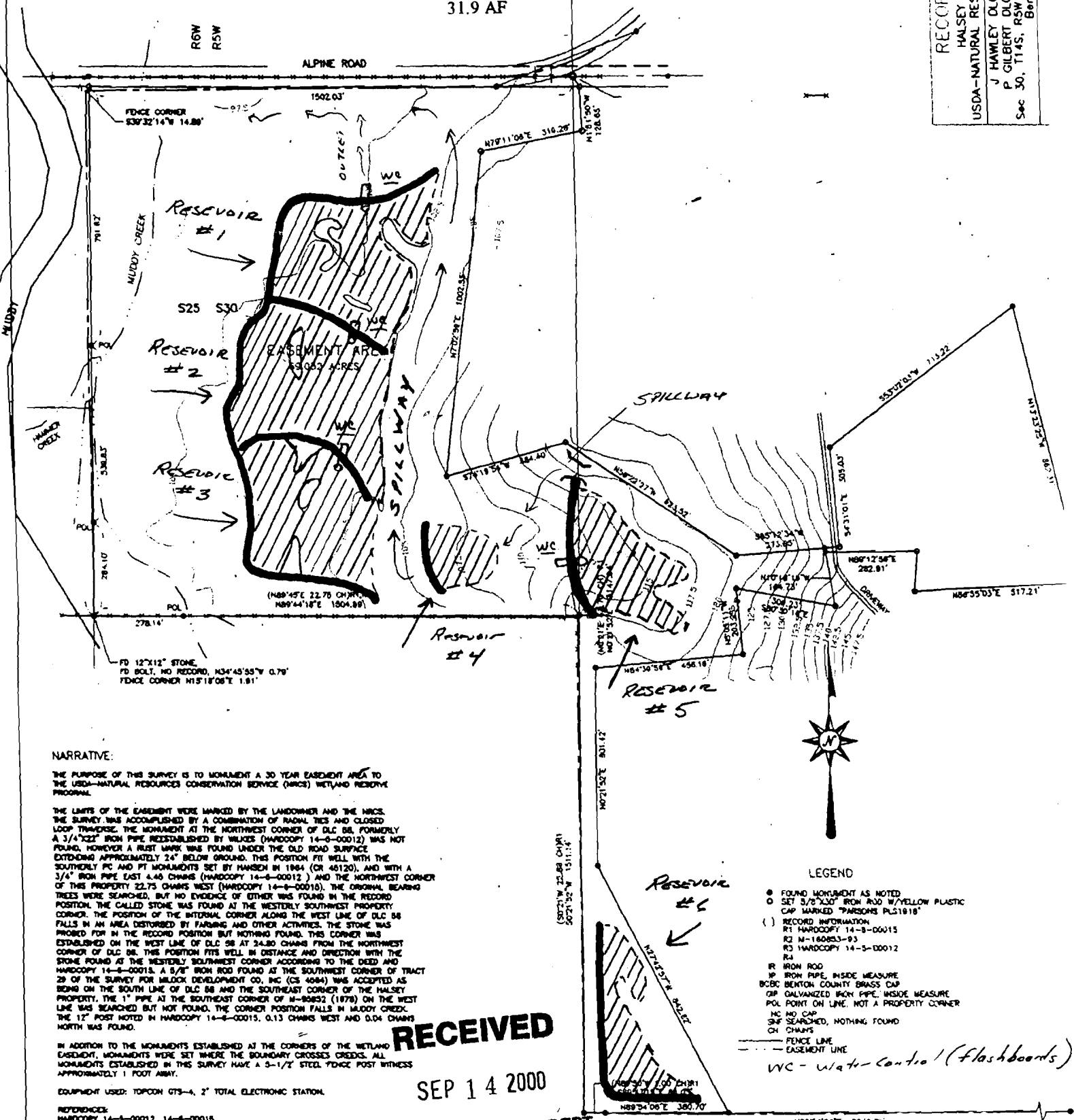


# WATER STORAGE CAPACITY

Reservoir	Ht.	Surface Area	Storage Capacity		
#1	2.5'	4.8 A	7.1 AF		
#2	2.5'	4.6 A	6.9 AF		
#3	2.5'	4.0 A	6.0 AF		
#4	1.5'	1.6 A	1.6 AF		
#5	8.5'	2.9 A	8.7 AF		
#6	1.5'	1.6 A <table border="1" style="margin-left: auto; margin-right: 0;" <tr> <td colspan="2"></td> <td style="text-align: right;">31.9 AF</td> </tr>			31.9 AF
		31.9 AF			

  |

**RECORD OF SURVEY**  
 HALSEY TREE FARM TRUST &  
 USDA-NATURAL RESOURCES CONSERVATION SERVICE  
 J HAWLEY DLC 51, J BELKNAP DLC 55,  
 P GILBERT DLC 58 & L GILBERT DLC 59  
 Sec 30, T14S, R5W & E1/2 Sec 25, T14S R6W, WM  
 Benton County, OR



**NARRATIVE:**

THE PURPOSE OF THIS SURVEY IS TO MONUMENT A 30 YEAR EASEMENT AREA TO THE USDA-NATURAL RESOURCES CONSERVATION SERVICE (NRCS) WETLAND RESERVE PROGRAM.

THE LIMITS OF THE EASEMENT WERE MARKED BY THE LANDOWNER AND THE NRCS. THE SURVEY WAS ACCOMPLISHED BY A COMBINATION OF BURIAL TIES AND CLOSED LOOP TRIMMER. THE MONUMENT AT THE NORTHWEST CORNER OF DLC 58, FORMERLY A 3/4"X22" IRON PIPE REESTABLISHED BY WALKER (HARDCOPY 14-9-00012) WAS NOT FOUND, HOWEVER A RUST MARK WAS FOUND UNDER THE OLD ROAD SURFACE EXTENDING APPROXIMATELY 24" BELOW GROUND. THIS POSITION FIT WELL WITH THE SOUTHERLY PC AND PT MONUMENTS SET BY HANSEN IN 1964 (ON 46120), AND WITH A 3/4" IRON PIPE EAST 4.45 CHAINS (HARDCOPY 14-9-00012) AND THE NORTHWEST CORNER OF THIS PROPERTY 22.75 CHAINS WEST (HARDCOPY 14-9-00010). THE ORIGINAL BEARING TREES WERE SEARCHED, BUT NO EVIDENCE OF EITHER WAS FOUND IN THE RECORD POSITION. THE CALLED STONE WAS FOUND AT THE WESTERLY SOUTHWEST PROPERTY CORNER. THE POSITION OF THE INTERNAL CORNER ALONG THE WEST LINE OF DLC 58 FALLS IN AN AREA DISTURBED BY FARMING AND OTHER ACTIVITIES. THE STONE WAS PROBED FOR IN THE RECORD POSITION BUT NOTHING FOUND. THIS CORNER WAS ESTABLISHED ON THE WEST LINE OF DLC 58 AT 24.80 CHAINS FROM THE NORTHWEST CORNER OF DLC 58. THIS POSITION FITS WELL IN DISTANCE AND DIRECTION WITH THE STONE FOUND AS THE WESTERLY SOUTHWEST CORNER ACCORDING TO THE DEED AND HARDCOPY 14-9-00015. A 5/8" IRON ROD FOUND AT THE SOUTHWEST CORNER OF TRACT 28 OF THE SURVEY FOR MILCOX DEVELOPMENT CO, INC (CS 4684) WAS ACCEPTED AS BEING ON THE SOUTH LINE OF DLC 58 AND THE SOUTHWEST CORNER OF THE HALSEY PROPERTY. THE 1" PIPE AT THE SOUTHEAST CORNER OF M-90852 (1878) ON THE WEST LINE WAS SEARCHED BUT NOT FOUND. THE CORNER POSITION FALLS IN MUDDY CREEK. THE 12" POST NOTED IN HARDCOPY 14-9-00015, 0.13 CHAINS WEST AND 0.04 CHAINS NORTH WAS FOUND.

IN ADDITION TO THE MONUMENTS ESTABLISHED AT THE CORNERS OF THE WETLAND EASEMENT, MONUMENTS WERE SET WHERE THE BOUNDARY CROSSES CREEKS. ALL MONUMENTS ESTABLISHED IN THIS SURVEY HAVE A 5-1/2" STEEL FENCE POST WITH AN APPROXIMATELY 1 FOOT AWAY.

EQUIPMENT USED: TOPOCON GTS-4, 2" TOTAL ELECTRONIC STATION.

REFERENCES:  
 HARDCOPY 14-9-00012, 14-9-00015  
 PLAN OF OR 46120 (RT 12, SECTION 8), OCT 1864  
 CS 4684, CS 4684, PLAT OF ANONY PRUIT ADDITION TO ALPINE,  
 BENTON COUNTY RESTORATIONS, 3783 & 3784  
 BENTON COUNTY DEED RECORDS M-190863-83, M-182230-84, M-48183 (1874),  
 M-90852 (1878), M-175157-83

RECEIVED

SEP 14 2000

WATER RESOURCES DEPT.  
 SALEM, OREGON

**LEGEND**

- FOUND MONUMENT AS NOTED
- SET 3/8"X30" IRON ROD W/YELLOW PLASTIC CAP MARKED "PARSONS PL21818"
- ( ) RECORD INFORMATION
- R1 HARDCOPY 14-9-00015
- R2 M-180853-83
- R3 HARDCOPY 14-9-00012
- R4
- IR IRON ROD
- IP IRON PIPE, INSIDE MEASURE
- BCBC BENTON COUNTY BRASS CAP
- OP GALVANIZED IRON PIPE, INSIDE MEASURE
- POL POINT ON LINE, NOT A PROPERTY CORNER
- MC NO CAP
- SMF SEARCHED, NOTHING FOUND
- CH CHAINS
- FENCE LINE
- - - EASEMENT LINE
- WC - Water Control (flashboards)

Drawn by W.S. H. B. J.