

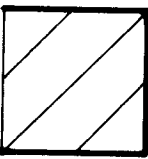







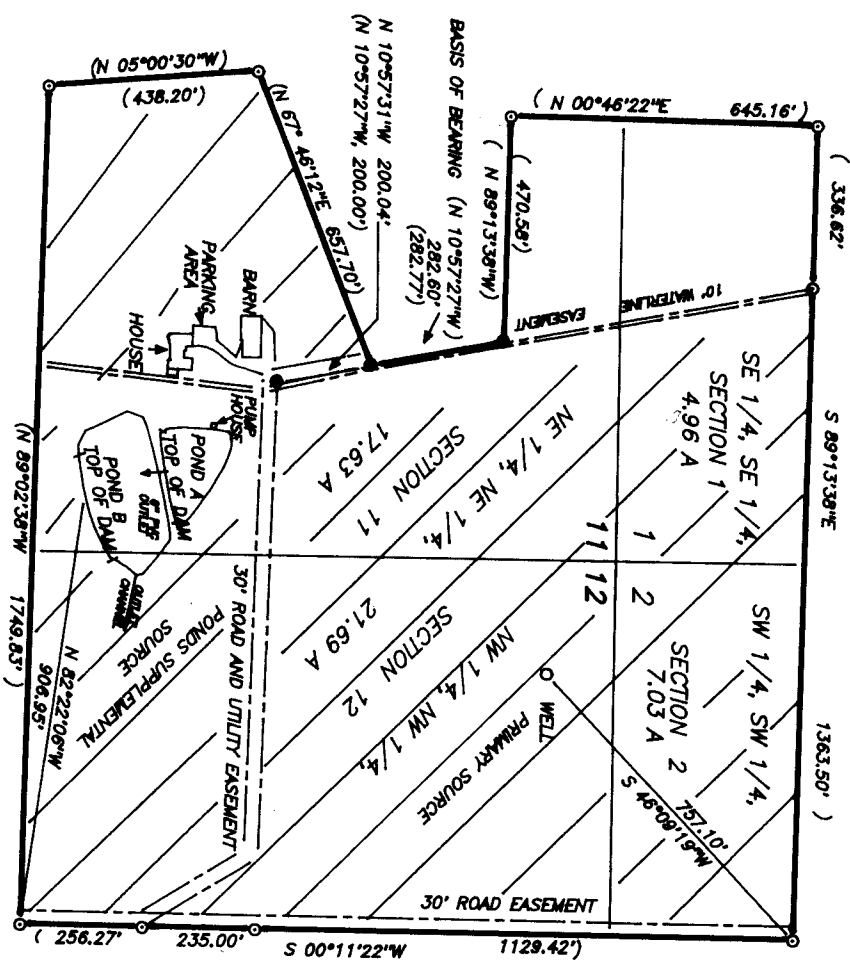
FINAL PROOF SURVEY
 FOR
MARVIN RAY STRAUGHAN
 TAX LOT 107
 SE 1/4, SE 1/4, SEC. 11; SW 1/4, SW 1/4, SEC. 2;
 NE 1/4, NE 1/4, SEC. 11; NW 1/4, NW 1/4, SEC. 12
 T.9 S.; R.5 W.; W.M.
 POLK COUNTY, OREGON
 JULY 17, 2002

RECEIVED
 AUG 05 2002
 WATER RESOURCES DEPT.
 SALEM, OREGON

THIS MAP IS FOR THE PURPOSE OF OBTAINING A WATER RIGHT AND IS NOT INTENDED TO PROVIDE LEGAL DIMENSIONS FOR LOCATION OF PROPERTY BOUNDARIES.

LEGEND

-  AREA TO BE IRRIGATED
 -  MONUMENT FOUND AND TIED
 -  5/8" IRON ROD WITH PLASTIC CAP MARKED "LS 1628"
 -  MONUMENT BASED ON C.S. 11542A
 -  RECORD DATA
 -  EASEMENTS OF RECORD
- SCALE 1 INCH = 400 FEET



SURVEYED BY:
L. W. HUNNEMULLER
 3055 N. E. LANCASTER
 CORVALLIS, OR 97330
 PHONE: (541) 757-7614

DAM:

	POND A	POND B	TOTAL
MAXIMUM HEIGHT	8 FEET	6 FEET	
TOP WIDTH	8 FEET	8 FEET	
AREA OF POND	0.46 ACRES	1.06 ACRES	1.52 ACRES
MAXIMUM DEPTH	9 FEET	8 FEET	
STORAGE CAPACITY	1.66 A.F.	3.34 A.F.	5.00 ACRE FEET

TOTAL ACREAGE TO BE IRRIGATED 51.31 ACRES

