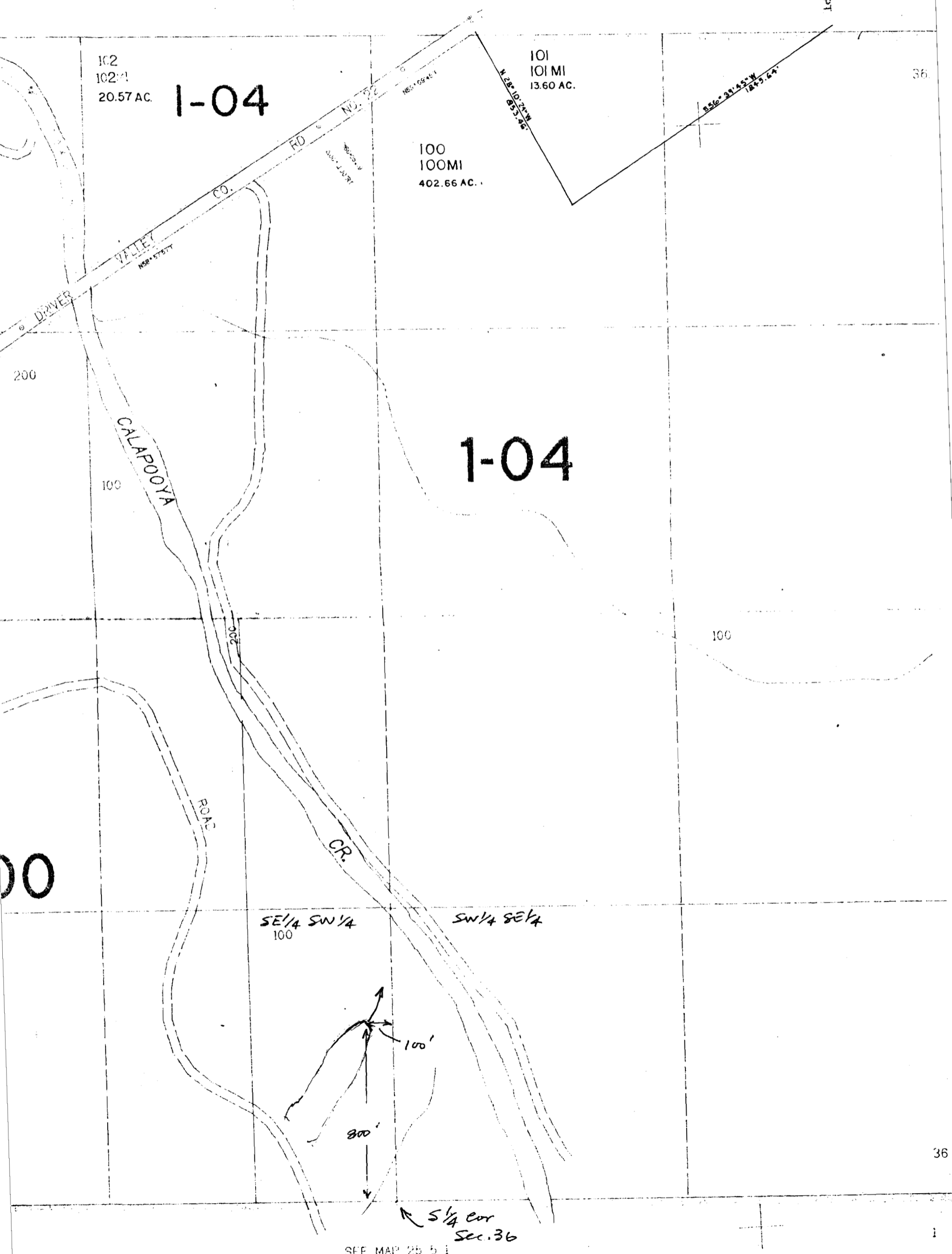


SECTION 36 T.24S. R.5W. W.1A.
DOUGLAS COUNTY

RECEIVED
AUG - 1 1996
WATER RESOURCES DEPT
SALEM OREGON

Application No. R-81370
Permit No. R12217

SEE MAP 24 5 25



SEE MAP 25 5 1

5 1/4 cor
Sec. 36