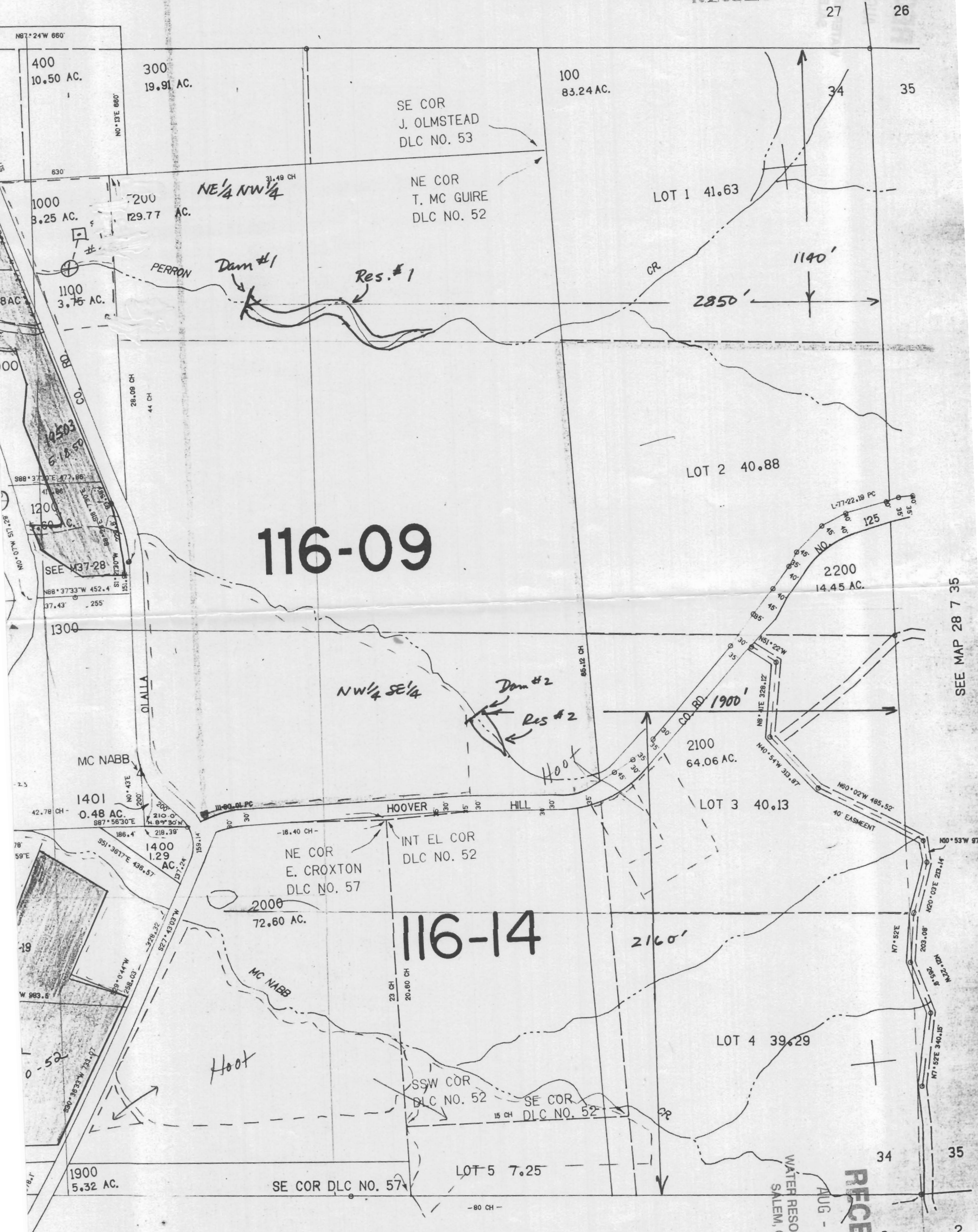


SECTION 34 T.28S. R.7W. W.M.
DOUGLAS COUNTY

1"=400'

SEE MAP 28 7 27

Application No. R-81372
Permit No. R12312



116-09

116-14

RECEIVED
AUG - 2 1996
WATER RESOURCES DEPT.
SALEM, OREGON

SEE MAP 29 7 3

SEE MAP 28 7 35