

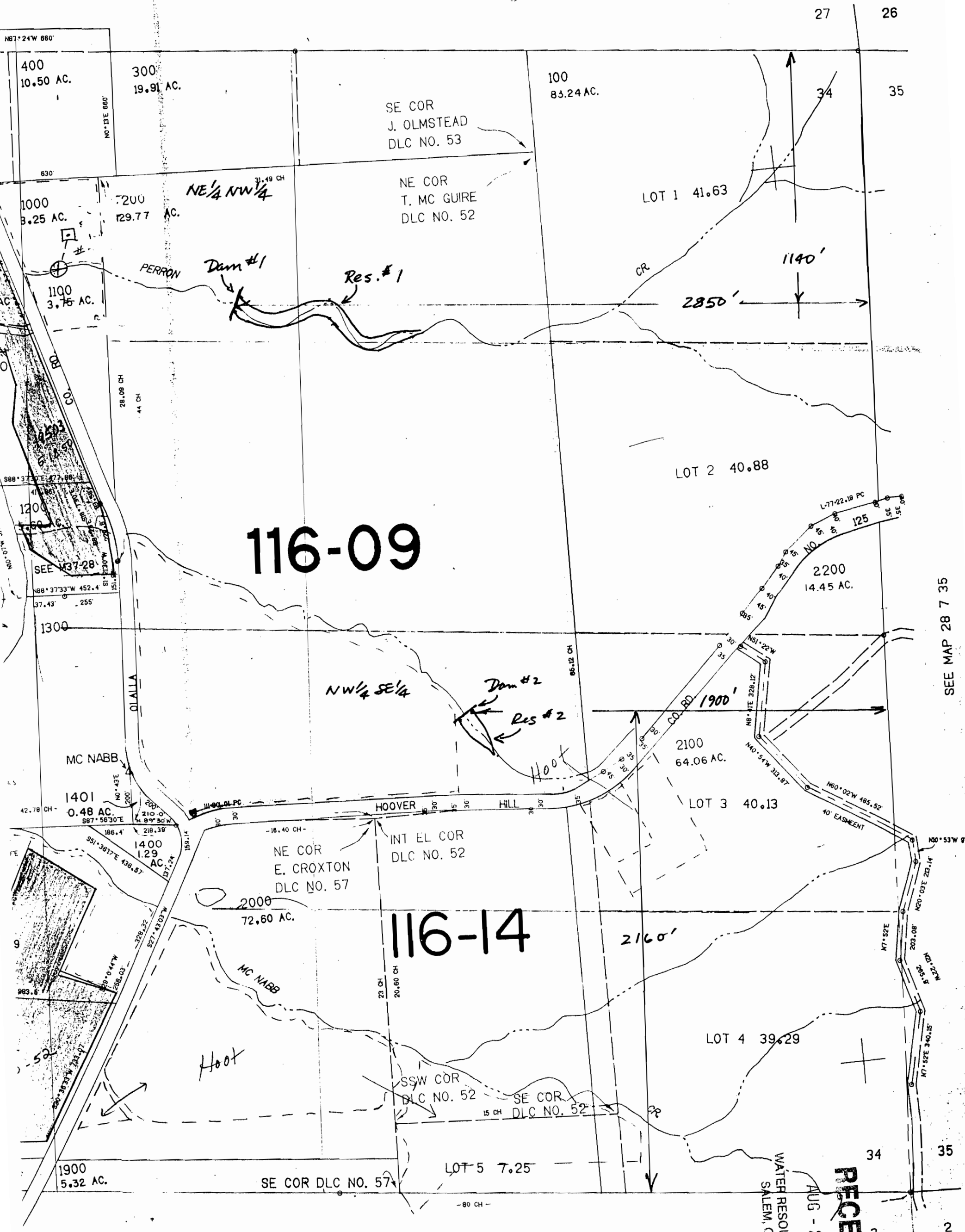
SECTION 34 T.28S. R.1W. W.M.
DOUGLAS COUNTY

1"=400'

183567

Application No. ~~R-81312~~
Permit No.

SEE MAP 28 7 27



SEE MAP 28 7 35

Application No. 83567
Permit No. 183567
SEE MAP 29 7 3

RECEIVED
AUG - 2 1996
WATER RESOURCES DEPT.
SALEM, OREGON