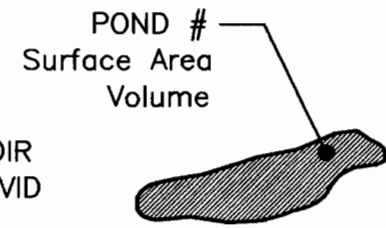
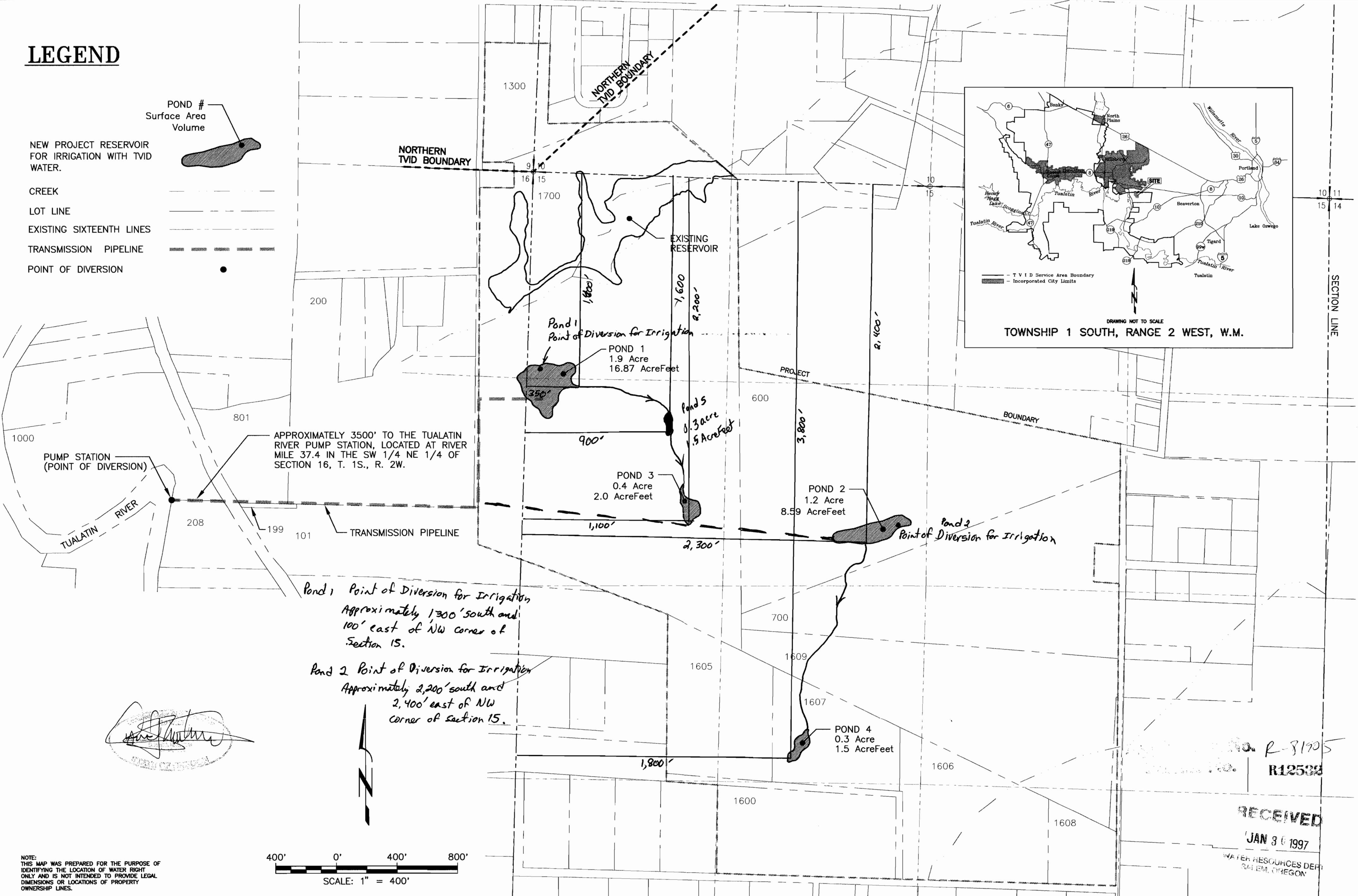
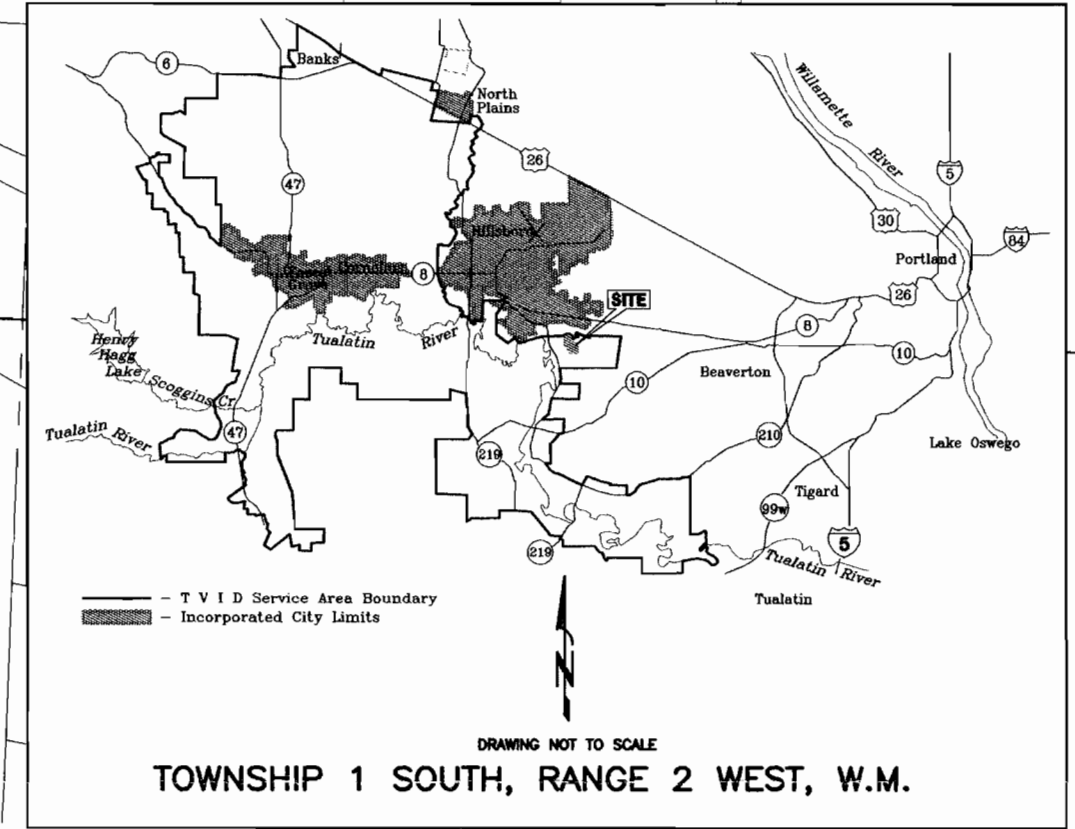


LEGEND

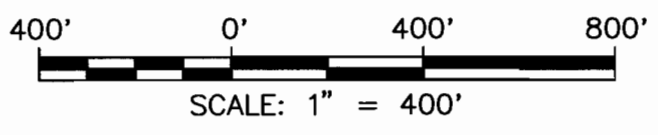
NEW PROJECT RESERVOIR FOR IRRIGATION WITH TVID WATER.



- CREEK
- LOT LINE
- EXISTING SIXTEENTH LINES
- TRANSMISSION PIPELINE
- POINT OF DIVERSION



[Signature]



NOTE: THIS MAP WAS PREPARED FOR THE PURPOSE OF IDENTIFYING THE LOCATION OF WATER RIGHT ONLY AND IS NOT INTENDED TO PROVIDE LEGAL DIMENSIONS OR LOCATIONS OF PROPERTY OWNERSHIP LINES.

No. R-31905
R12532

RECEIVED
JAN 30 1997
WATER RESOURCES DEPT.
SALEM, OREGON

NO.	DATE	BY	REVISIONS



DAVID J. NEWTON ASSOCIATES, INC.
CIVIL & GEOLOGICAL ENGINEERING SERVICES
1201 S.W. 12TH AVENUE, SUITE 400
PORTLAND, OREGON 97205
(503) 228-7718 FAX (503) 228-7781

DESIGNED BY:	DJN
DRAWN BY:	RE
CHECKED BY:	DJN
DATE:	JANUARY, 1997
SCALE:	1" = 400'

PROPOSED RESERVOIRS	
FOR THE RESERVE VINEYARDS AND GOLF CLUB	
PROJECT NO:	711-101
FILE:	G:\711\101\PONDS.DWG
1	