

SEC. 34 T9SR4WWM

POLK COUNTY

RECEIVED

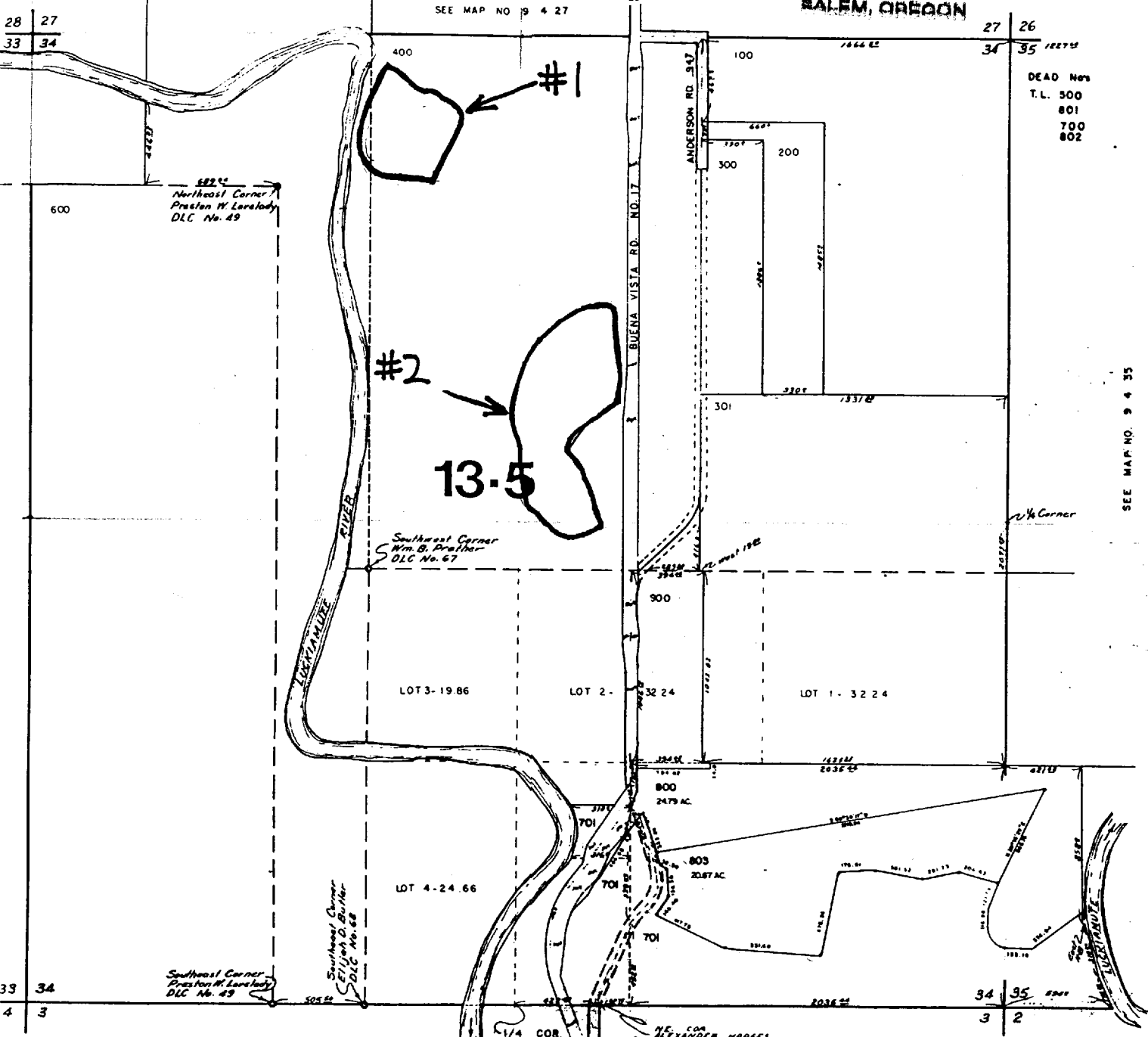
JUN 24 1998

WATER RESOURCES DEPT.  
SALEM, OREGON

IMPORTANT  
This Map for Assessment  
and Taxation Purposes  
ONLY

SCALE 1" = 400'

SEE MAP NO 9 4 27



SEE MAP NO. 9 4 35

LOCATION MAP

SEE MAP NO. 10 4 3

Application

R83870

CHRISTOPHER SWAN WETLAND ENHANCEMENT

Permit No.

R13556

USDA Wetland Reserve Program  
In cooperation with Oregon Department of Fish and Wildlife

Assessor's Plat Map Polk County  
(Scale of this copy is reduced to 1" = 800')

Reservoir # 1 NE1/4 NW 1/4 SEC 34 T9S R4W WM TAX LOT # 400

Reservoir # 2 SW1/4 NE1/4 SEC 34 T9S R4W WM TAX LOT # 400