

IMPORTANT
This Map for Assessment
and Taxation Purposes
ONLY

SEC. 34 T9SR4WWM

POLK COUNTY

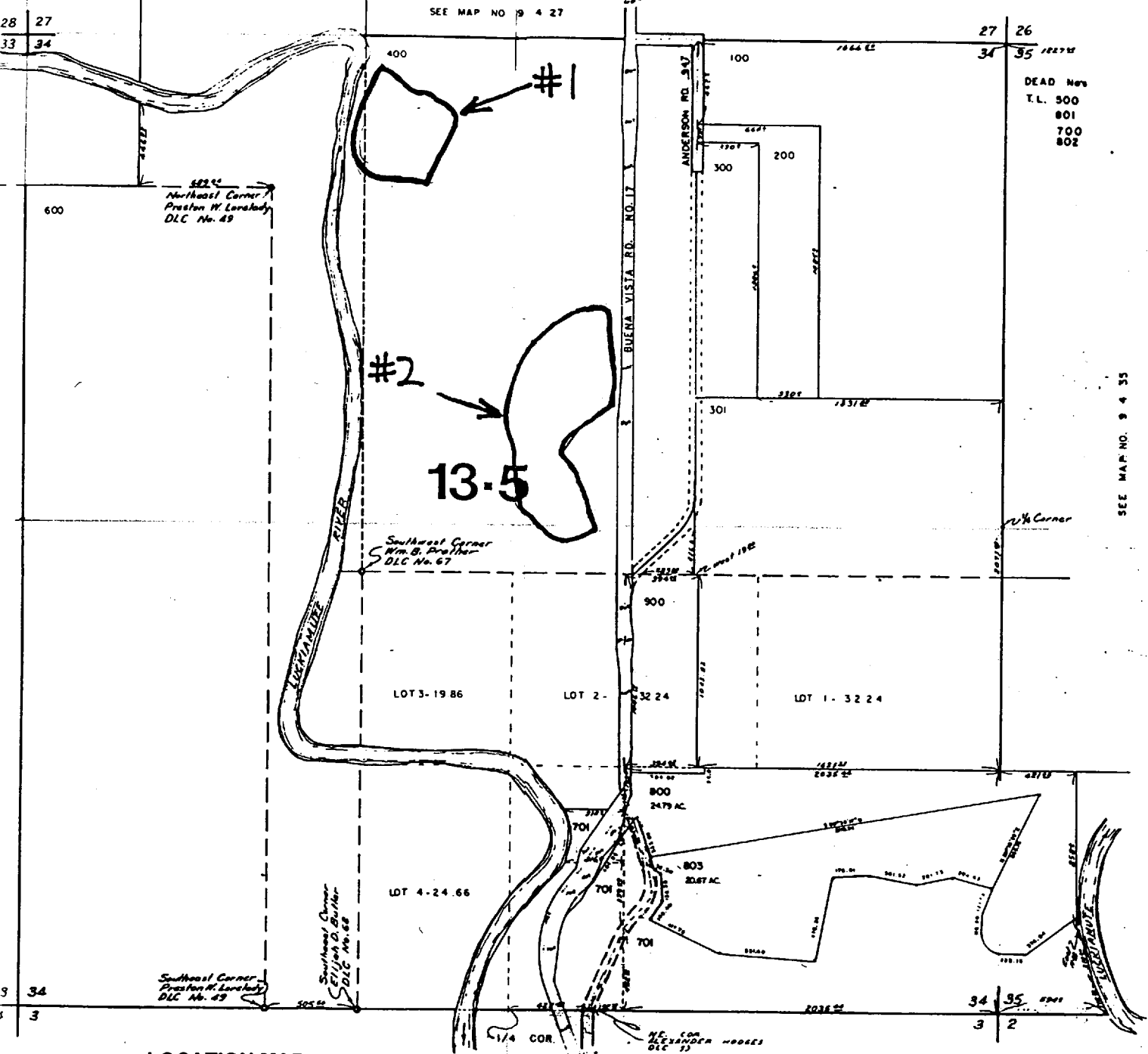
Application No. R 83871

Permit No. R12560

34

SCALE 1" = 400'

SEE MAP NO. 9 4 27



LOCATION MAP

SEE MAP NO. 10 4 3

CHRISTOPHER SWAN WETLAND ENHANCEMENT

USDA Wetland Reserve Program
In cooperation with Oregon Department of Fish and Wildlife

Assessor's Plat Map Polk County
(Scale of this copy is reduced to 1" = 800')

Reservoir # 1 NE1/4 NW 1/4 SEC 34 T9S R4W WM TAX LOT # 400

Reservoir # 2 SW1/4 NE1/4 SEC 34 T9S R4W WM TAX LOT # 400

RECEIVED

JUN 24 1998

WATER RESOURCES DEPT.
SALEM, OREGON

SEE MAP NO. 9 4 35