

IMPORTANT
This Map for Assessment
and Taxation Purposes
ONLY

SEC. 5 T9S R5W WM
POLK COUNTY
Scale 1" = 400'

See Map 9.5.32

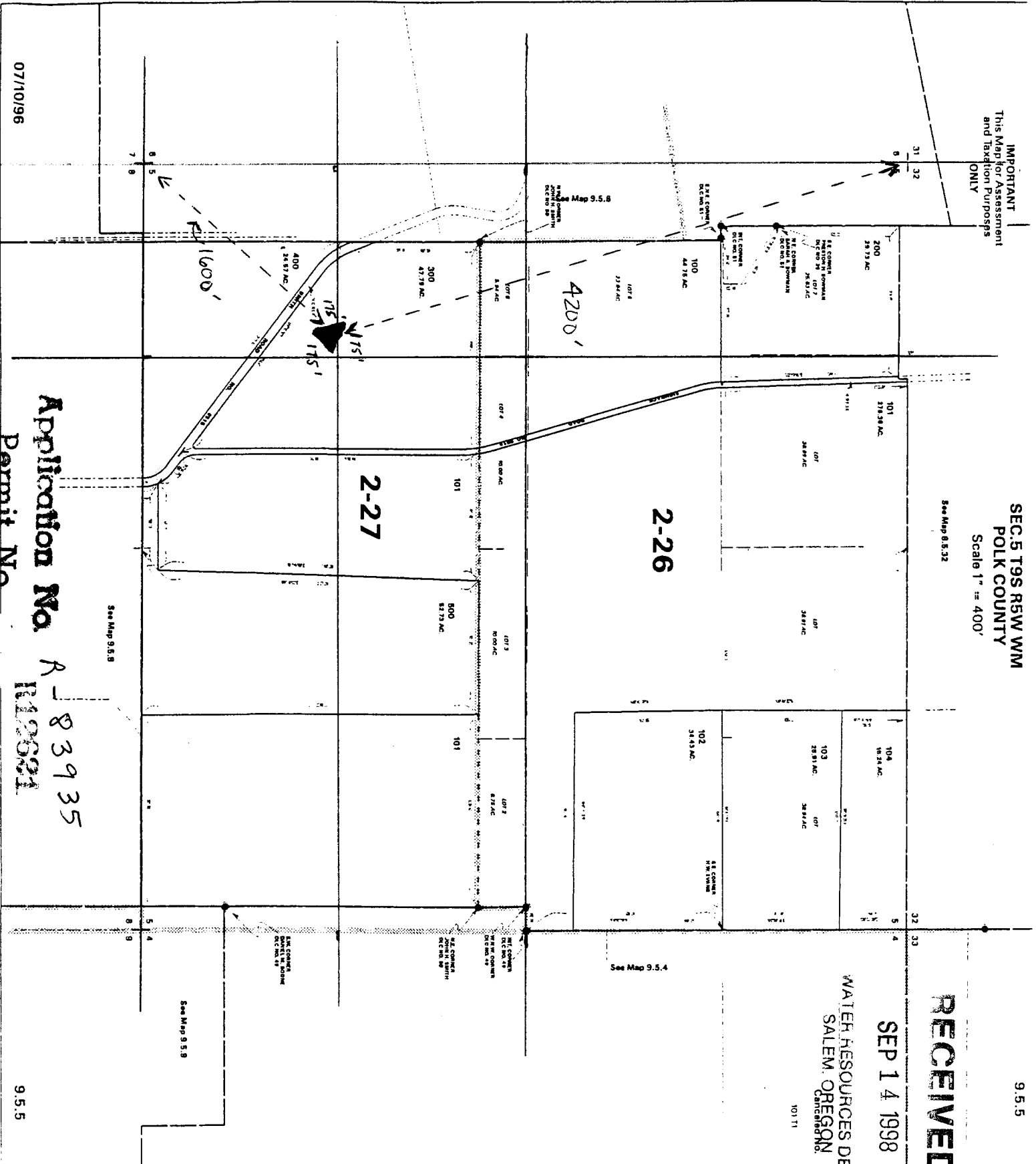
RECEIVED

SEP 14 1998

WATER RESOURCES DEPT.
SALEM, OREGON

101 11

9.5.5



07/10/96

Application No. R-83935
Permit No. R120691

See Map 9.5.8

See Map 9.5.8

9.5.5