

1.18 Acres Irrigated

1.43 Acres Irrigated

RECEIVED

FEB 25 1999

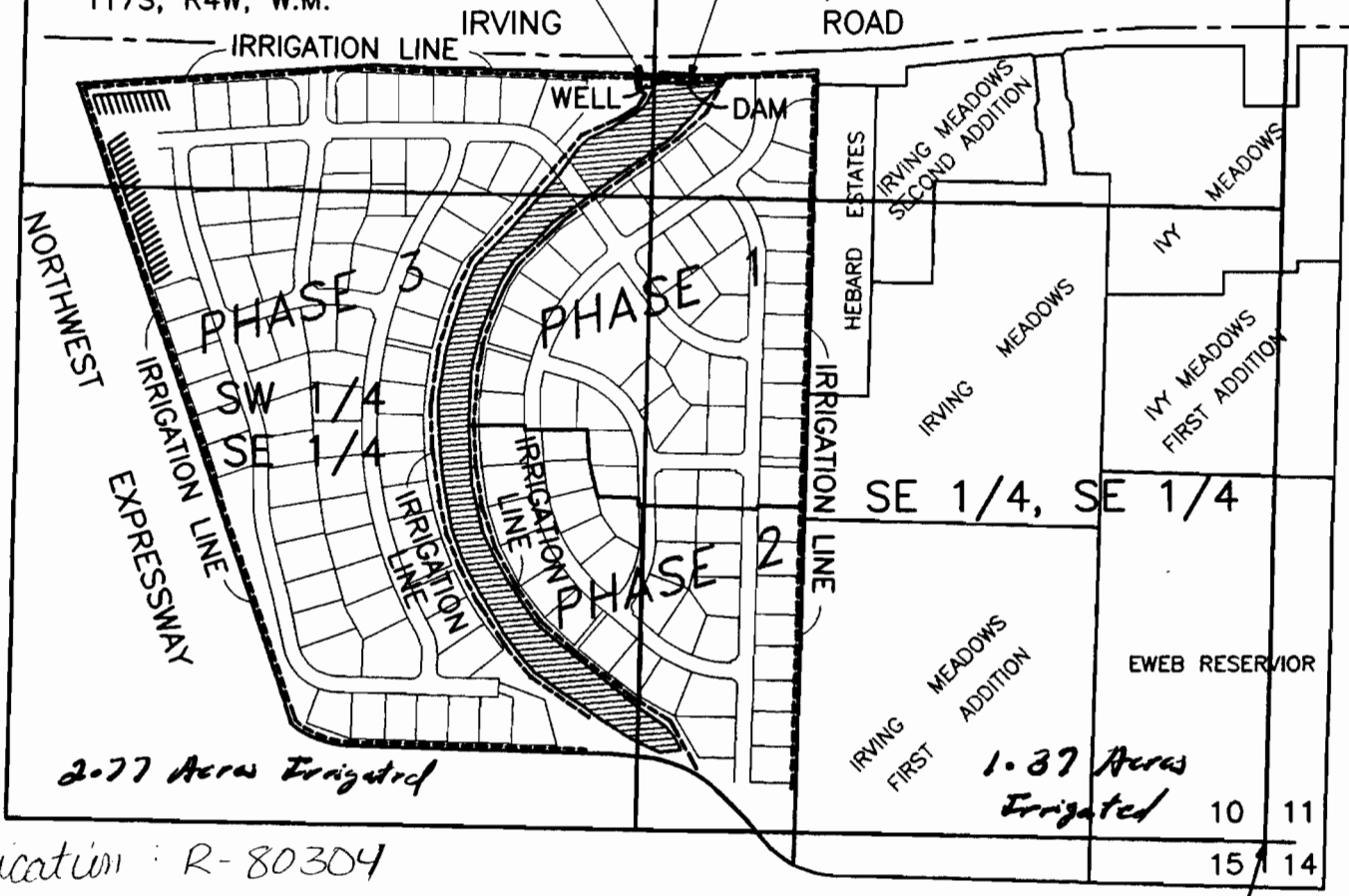
WATER RESOURCES DEPT.
SALEM, OREGON

NW 1/4, SE 1/4

NE 1/4, SE 1/4

WELL IS 1336' WEST & 1559'
NORTH OF S.E. COR. SEC. 10,
T17S, R4W, W.M.

DAM IS 1250' WEST & 1560'
NORTH OF S.E. COR. SEC. 10,
T17S, R4W, W.M.



2.77 Acres Irrigated

1.37 Acres Irrigated

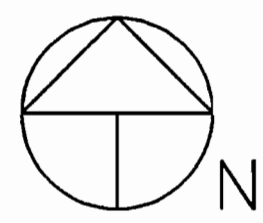
application : R-80304
Permit : R12628

- 2" MAIN IRRIGATION LINE
- ▨ APPROXIMATE AREA OF RESERVIOR

APPROXIMATE LOCATION
OF SE CORNER OF
SECTION 10, T17S, R4W, W.M.

GAINSBOROUGH IRRIGATED AREAS
1070 IRVING ROAD, EUGENE, OR
DOUGLAS MOORHEAD CONST., INC.

SCHAUDT · STEMM & WILD INC.
engineers surveyors planners
1205 oak street • eugene, oregon, 97401 • (541) 485-8383



SCALE 1" = 400'