

SECTION 25 T.28S. R.7W. W.M.
DOUGLAS COUNTY

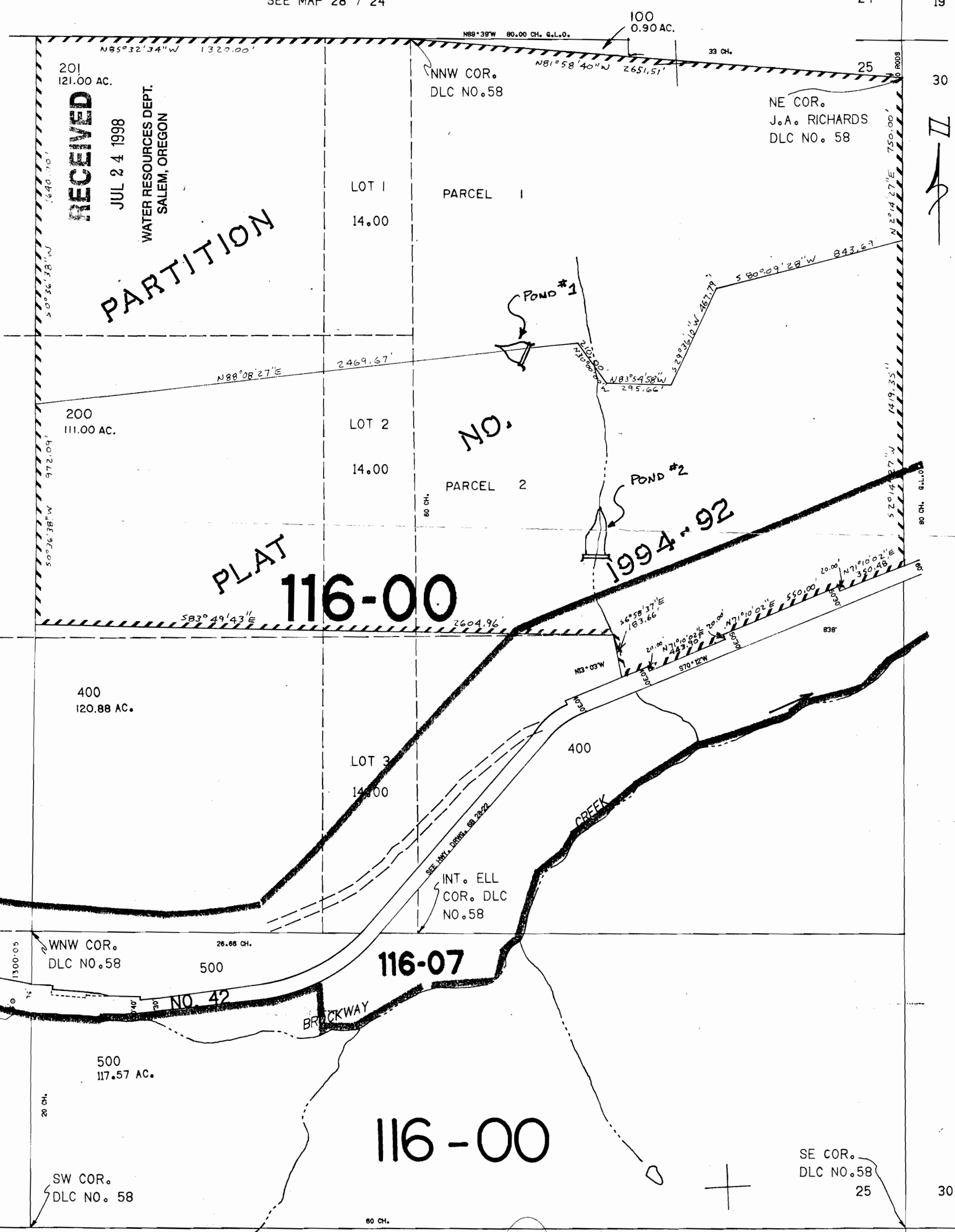
REVISED ON
11-16-94

1"=400'

Application No. R83891
Permit No. R12661

SEE MAP 28 7 24

24 19



RECEIVED
JUL 24 1998
WATER RESOURCES DEPT.
SALEM, OREGON

PARTITION

PLAT
116-00

1994-92

116-07

116-00