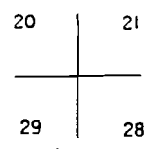
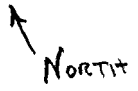


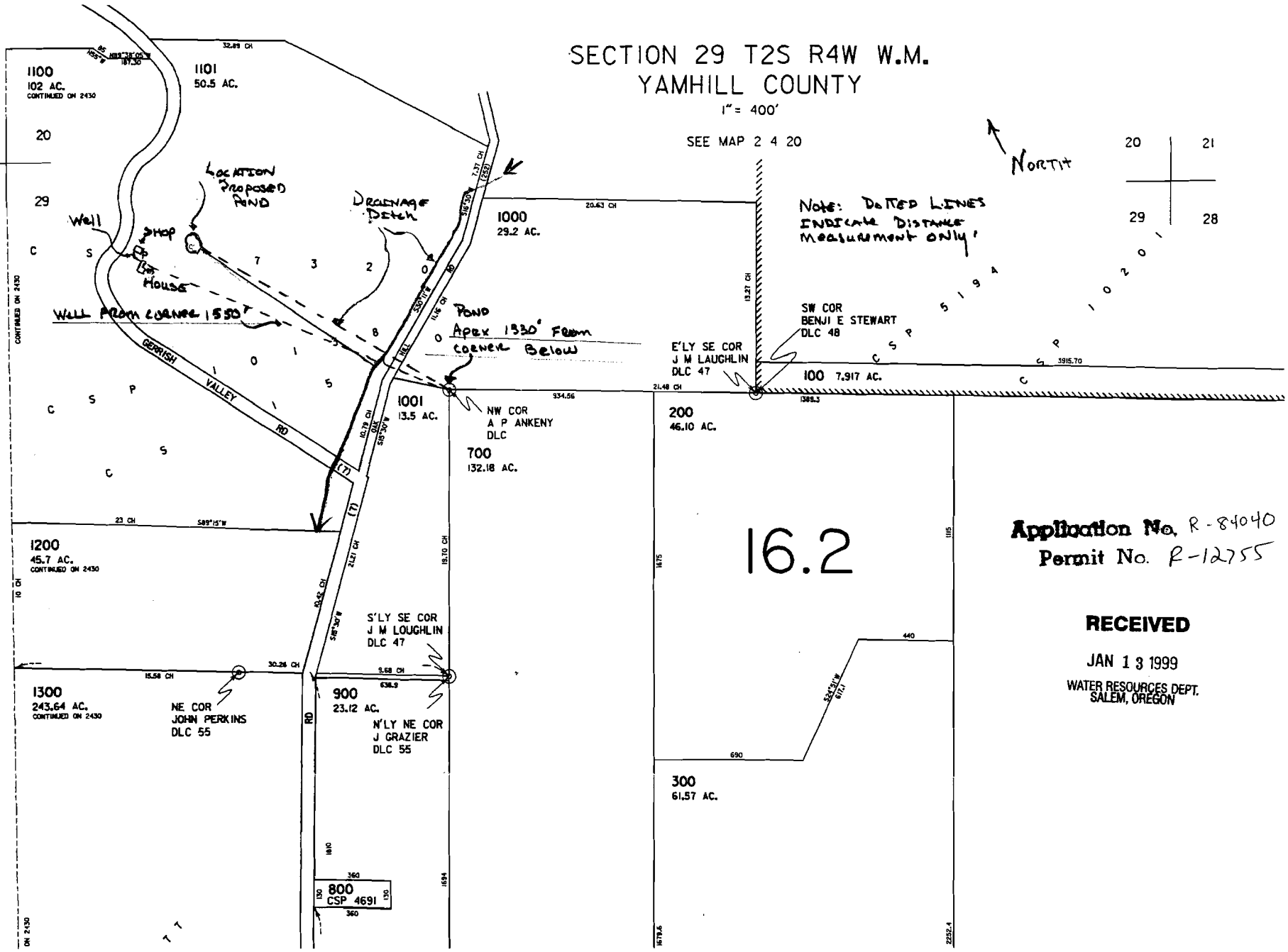
AS PREPARED FOR
NT PURPOSE ONLY

SECTION 29 T2S R4W W.M.
YAMHILL COUNTY
1" = 400'

SEE MAP 2 4 20



19
20
29



Note: DOTTED LINES
INDICATE DISTANCE
MEASUREMENT ONLY!

Application No. R-84040
Permit No. P-12755

RECEIVED
JAN 13 1999
WATER RESOURCES DEPT.
SALEM, OREGON

SEE MAP 2 4 30

1100
102 AC.
CONTINUED ON 2430

1101
50.5 AC.

1000
29.2 AC.

100
7.917 AC.

1200
45.7 AC.
CONTINUED ON 2430

1001
13.5 AC.

NW COR
A P ANKENY
DLC

700
132.18 AC.

200
46.10 AC.

16.2

1300
243.64 AC.
CONTINUED ON 2430

NE COR
JOHN PERKINS
DLC 55

900
23.12 AC.

N'LY NE COR
J GRAZIER
DLC 55

300
61.57 AC.

800
CSP 4691 D.O.