

WATER RESOURCES DEPT
SALEM, OREGON

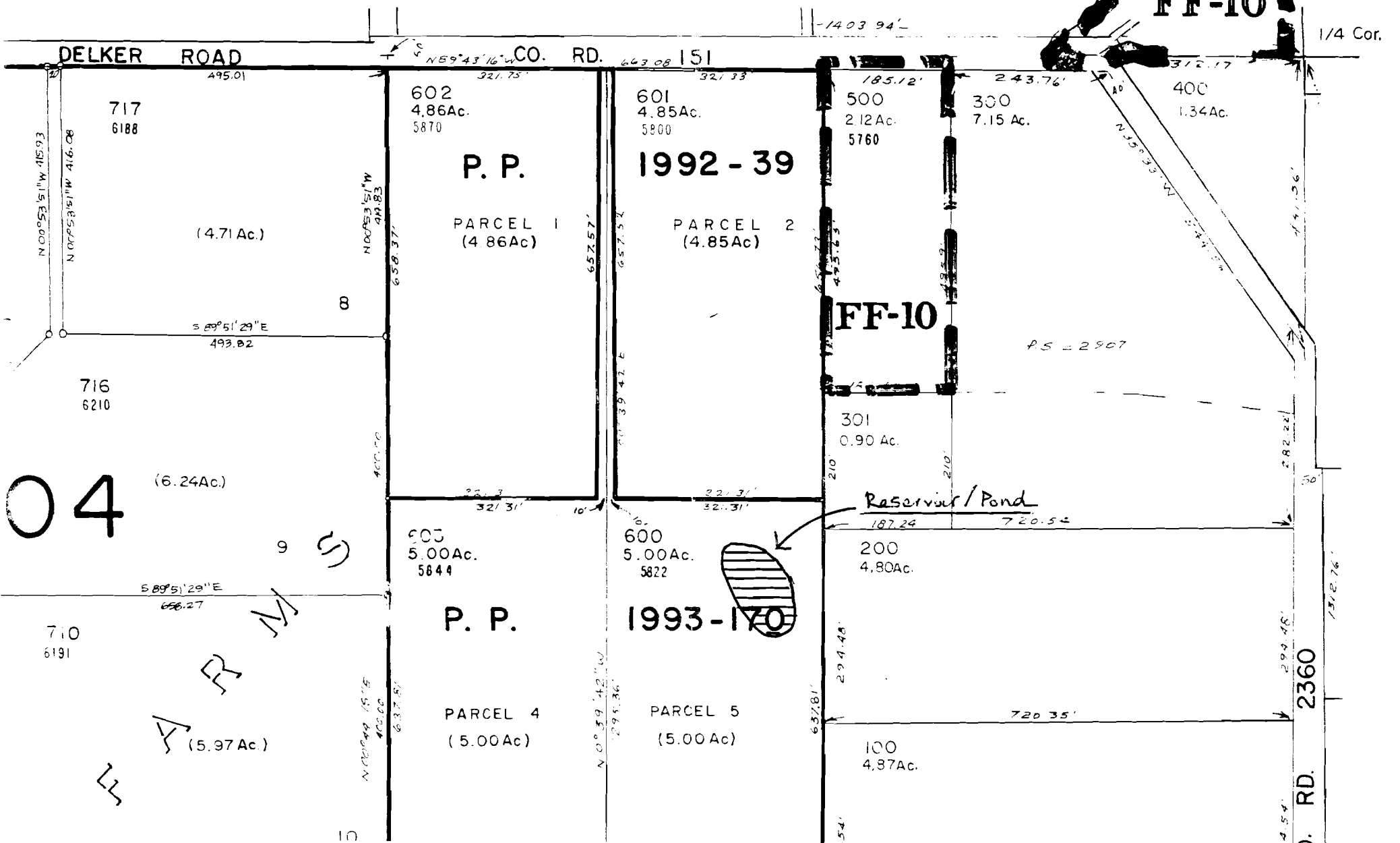
RECEIVED
OCT 12 1999
NW 1/4 SEC. 31 T. 2 S. R. 1 E. W. M.
CLACKAMAS COUNTY

1" = 200'

SEE MAP 2 1 E 30 C

K-84280 CANCELLED
700
R-12865

FF-10



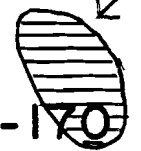
04

9 S

R M S

A R W S

W



2360

RD.