

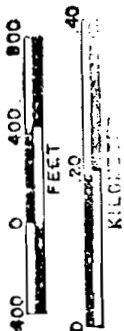
SEC. 17 T7SR4WWM

SEE MAP NO 7 4 8

POLK COUNTY

SCALE 1"=400'

SCALE 1"=9600'



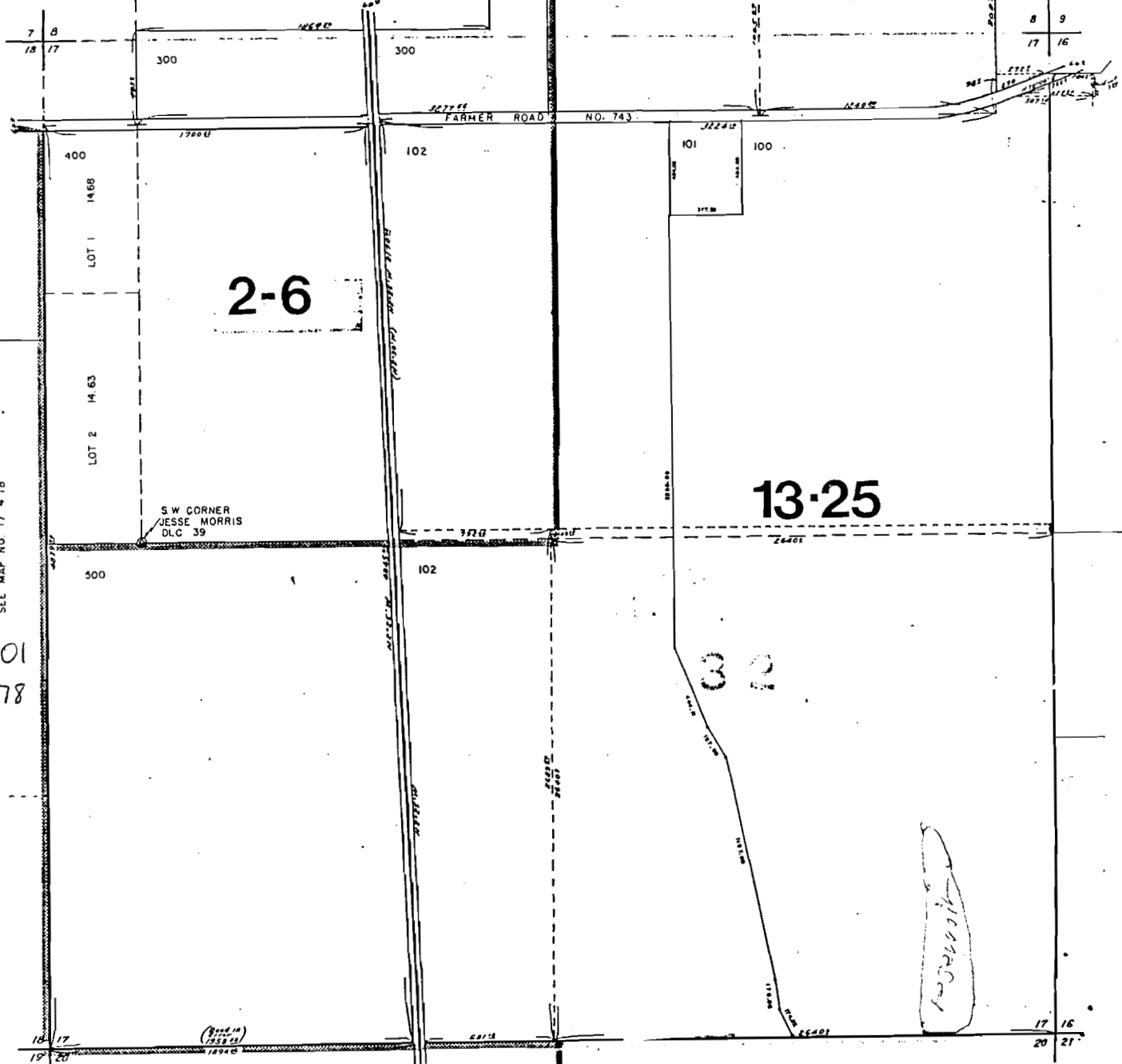
RECEIVED

NOV 24 1999

WATER RESOURCES DEPT.  
SALEM, OREGON

SEE MAP NO. 17 4 18

Application No. R-84301  
Permit No. R-12878



SEE MAP NO. 7 4 16

SEE MAP NO. 7 4 20