

DOUGLAS COUNTY

INDEX

DOUGLAS

30 6 27

This map was prepared for assessment purpose only.

1" = 400'

SEE MAP 30 6 22

WATER RESOURCES DEPT
SALEM, OREGON

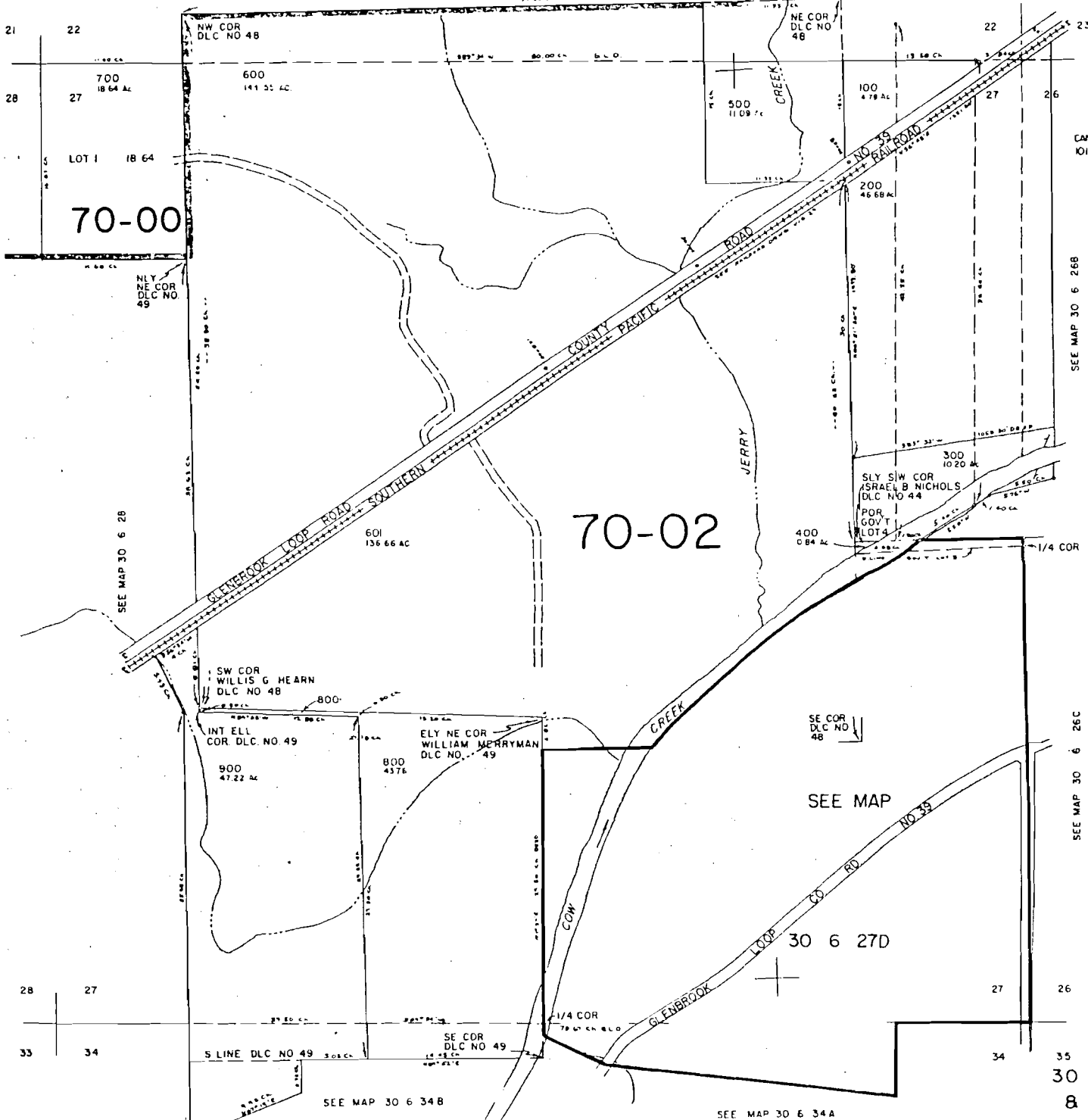
DEC 27 1995

CANCELLED NO'S
101

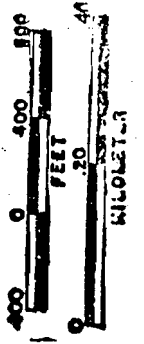
SEE MAP 30 6 268

SEE MAP 30 6 26C

INDEX



SCALE 1:9600



RECEIVED

DEC 27 1995

WATER RESOURCES DEPT
SALEM, OREGON

RECEIVED
MAR 20 1992
DEPT. OF REVENUE STATE OF OREGON
ASSESSMENT & APPRAISAL DIV.



2-87323

473,000

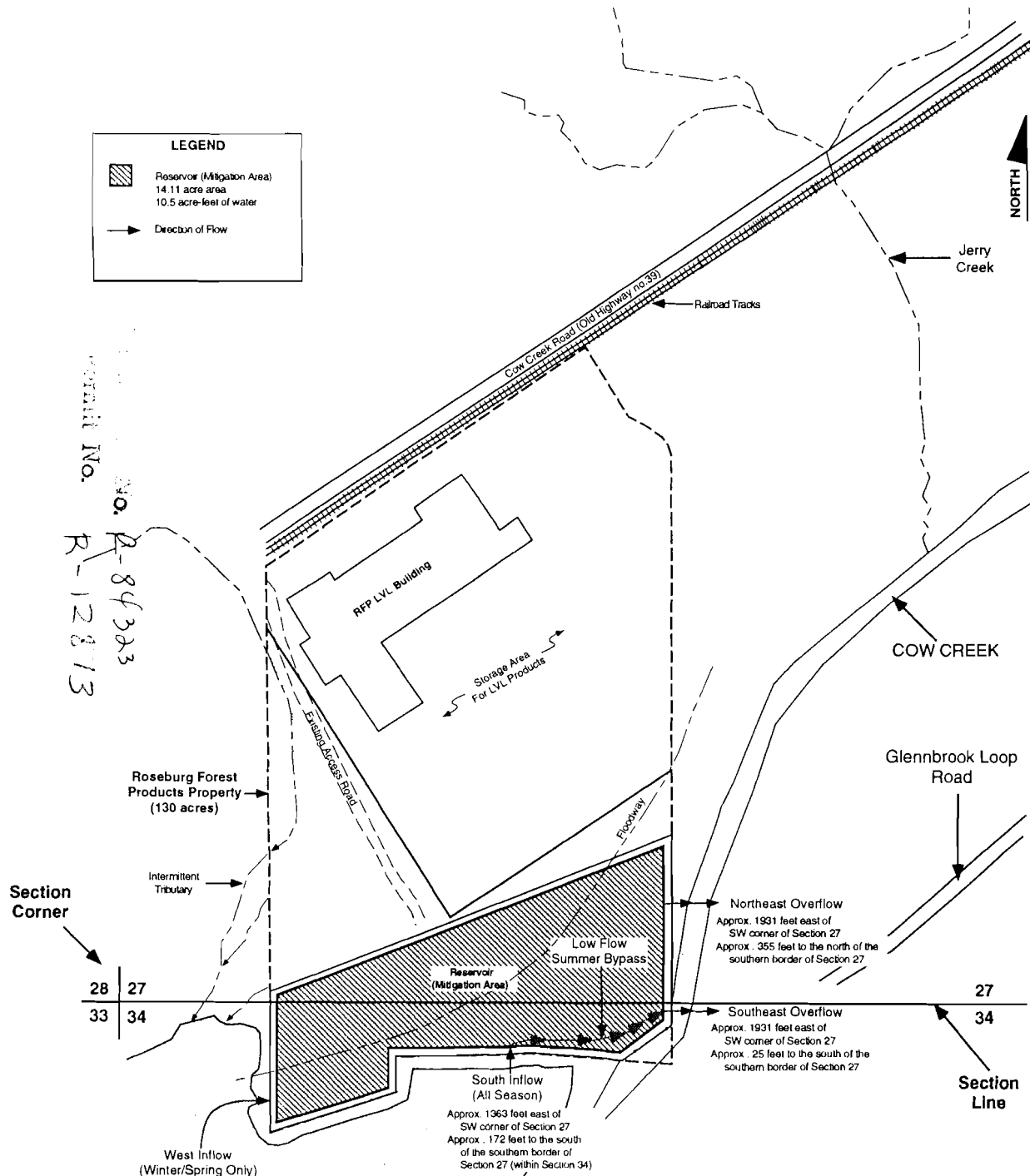
SEE MAP 30 6 34A

SEE MAP 30 6 34B

LEGEND

-  Reservoir (Mitigation Area)
14.11 acre area
10.5 acre-feet of water
-  Direction of Flow

PINNACLE NO. R-84323
 R-12813



LOCATION

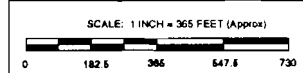
Township 30S
 Range 6W
 SE 1/4 of the SW 1/4 of Section 27
 NE 1/4 of the NW 1/4 of Section 34
 Tax Lots 27-601, 27-800
 27-900

RECEIVED
 DEC 27 1999
 WATER RESOURCES DEPT
 SALEM, OREGON

SOURCE: Douglas County Tax Assessor's map 30-6-27, and Pinnacle Engineering Survey (May 1999)

TERRA SCIENCE, INC.
 Soil, Water & Wetland Consultants

OREGON WATER RESOURCES DEPARTMENT
 APPLICATION FOR A PERMIT TO STORE WATER
 Riddle, Douglas County, Oreg.



December 1999 (Revised)

FIGURE 1