

RECEIVED

DEC 13 1999

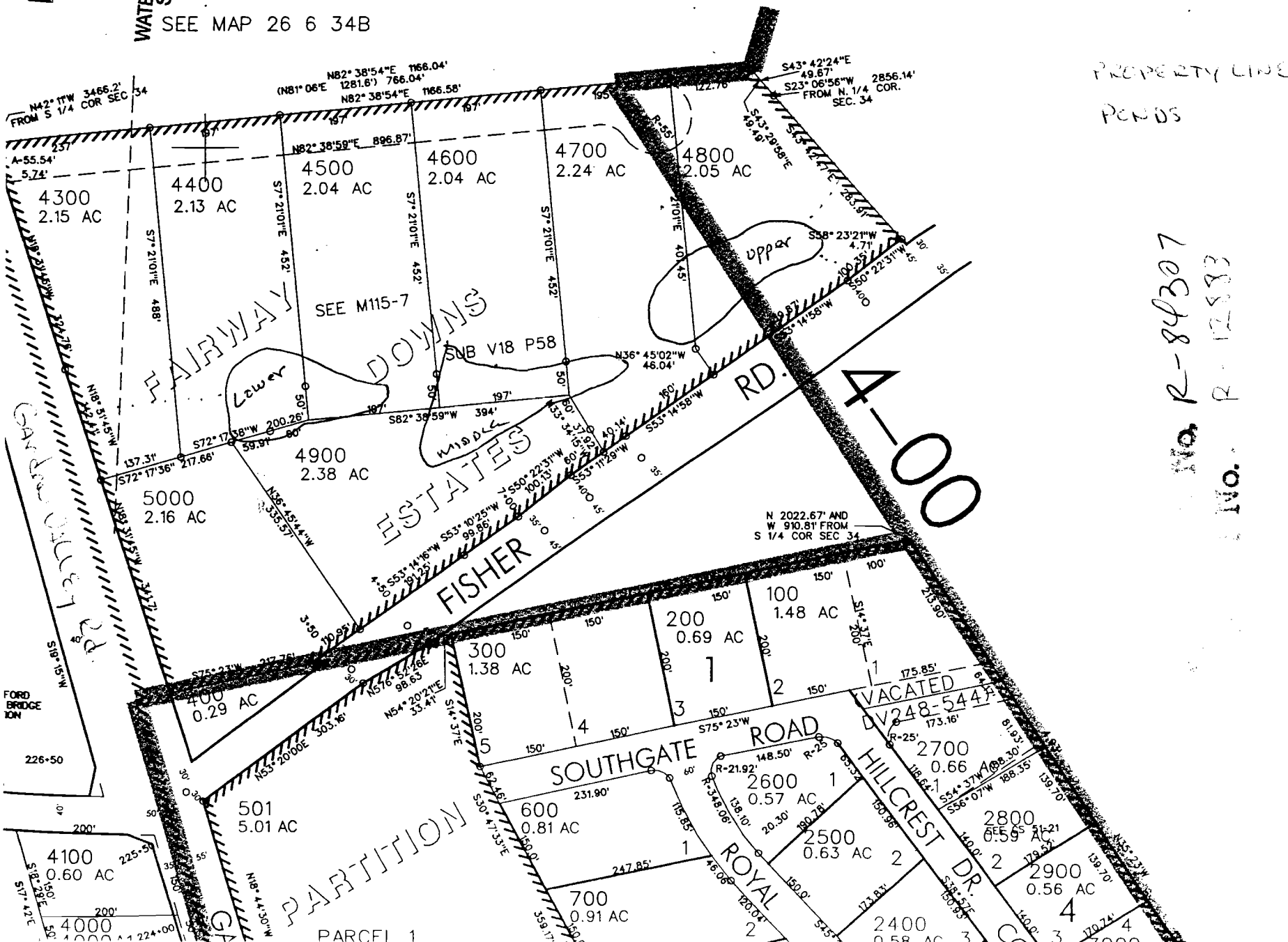
WATER RESOURCES DEPT  
SALEM, OREGON

# SW 1/4 SEC. 34 T.26S. R.6 W W.M. DOUGLAS COUNTY

1" = 200'

SEE MAP 26 6 34B

PROPERTY LINE  
PENDS



No. R-84307  
No. R-12883