

SW 1/4 SEC. 34 T.26S. R.6 W W.M. DOUGLAS COUNTY

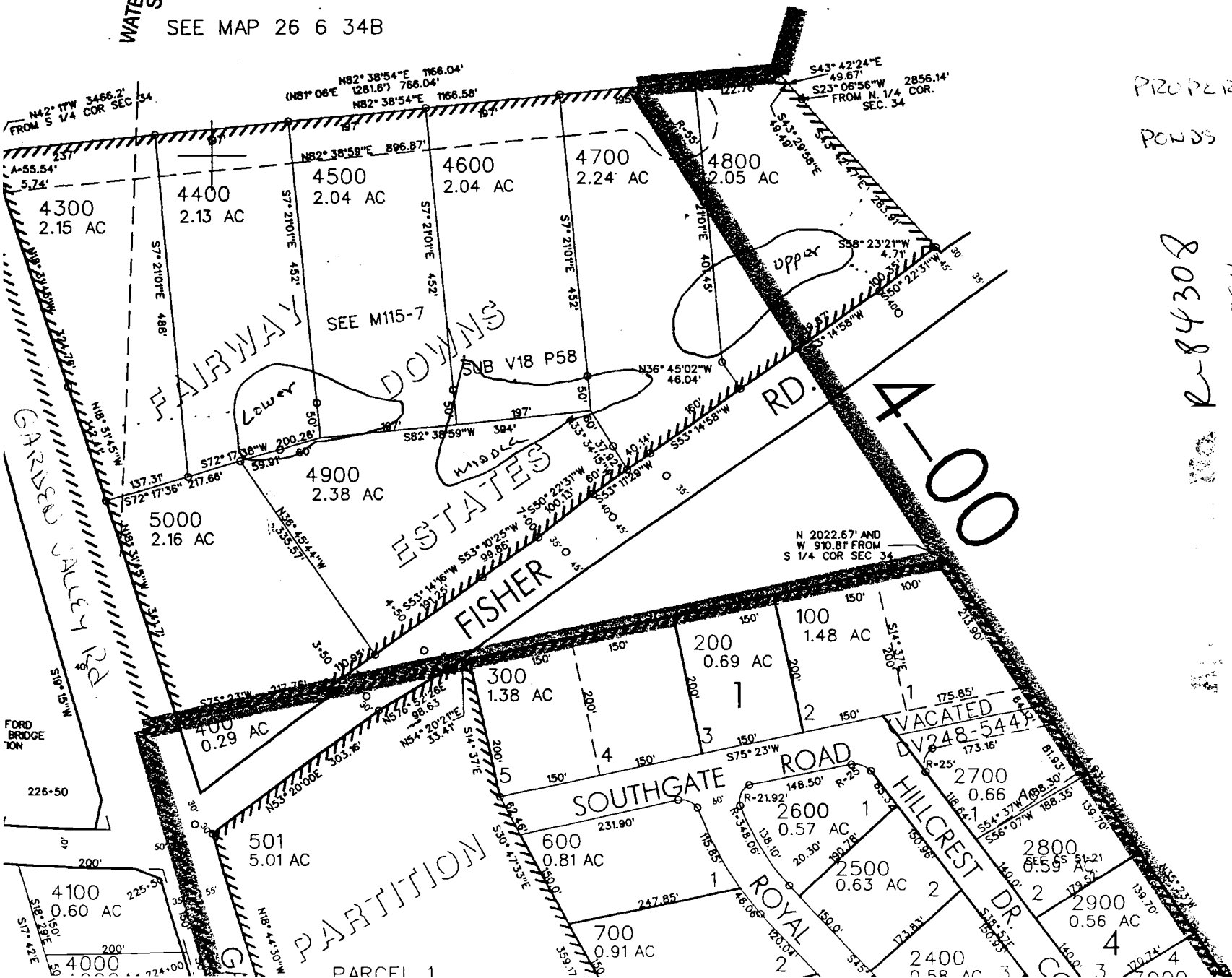
1" = 200'

RECEIVED
DEC 13 1999
WATER RESOURCES DEPT.
SALEM, OREGON

SEE MAP 26 6 34B

PROPERTY LINE
PONDS

NO. R-84308
NO. R-128814



N 2022.67' AND
W 990.81' FROM
S 1/4 COR SEC 34

400

VACATED
DV 248-5447

PARTITION
PARCEL 1