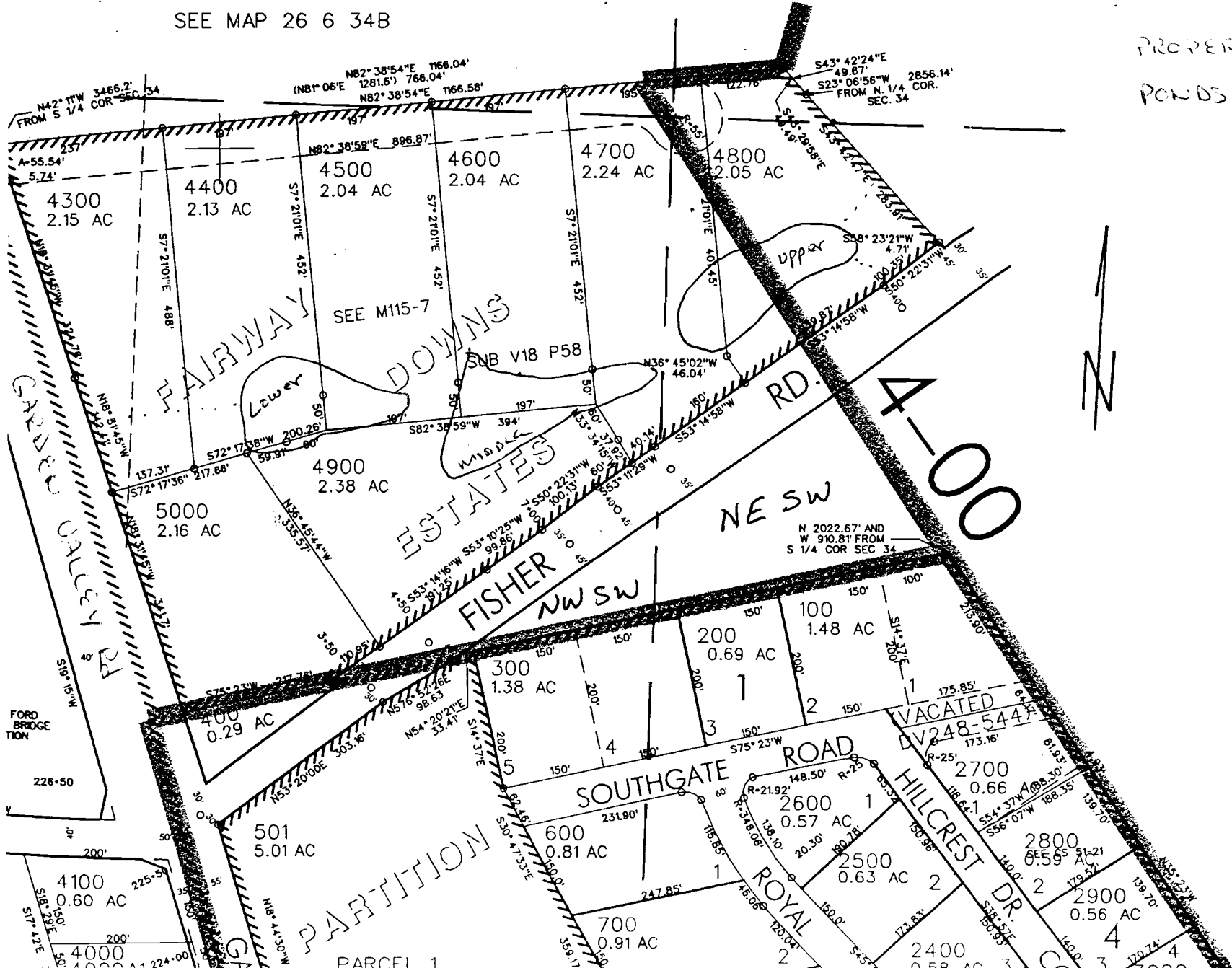


SW 1/4 SEC. 34 T.26S. R.6 W W.M.  
DOUGLAS COUNTY

1" = 200'

SEE MAP 26 6 34B

PROPERTY LINE  
PONDS



No. R-84309  
R-12885

WATER RESOURCES DEPT  
SALEM, OREGON

DEC 13 1999

RECEIVED