

INDORSED FOUND COR. 17

203
8.72 ac.

16

206
23.54 ac.

202
27.22 ac.

FD MARKED ROCK

RECEIVED

DEC 23 1999

WATER RESOURCES DEPT.
SALEM, OREGON

RRK

200
1.88 ac.

215
2.50 ac.

214
4.96 ac.

213
1.90 ac.

300
28.05 ac.

301
3.17 ac.

500
8.04 ac.

999
0.31 ac.

900
7.03 ac.

700
63.03 ac.

800
0.78 ac.

400
24.15 ac.

000
22.9 ac.

1/4 COR.

23-4

Application No. R-81314
Permit No. R-12888

SEE MAP IN 39

KK
V-4

1000

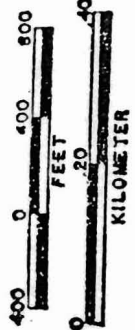
1" = 400'

UNION

THIS MAP WAS PREPARED FOR ASSESSMENT PURPOSE ONLY.

- CANCELLED NOS.
- 101 102 201
 - 801 802 803
 - 1001 1002
 - 1100 1200
 - 1201 1300
 - 1400 1501
 - 1701 1800
 - 1900 2100
 - 2200 2400
 - 2401 2402
 - 2500 2600
 - 600 2000A1
 - 204
 - 205
 - 207 thru 211

SCALE 1:9600

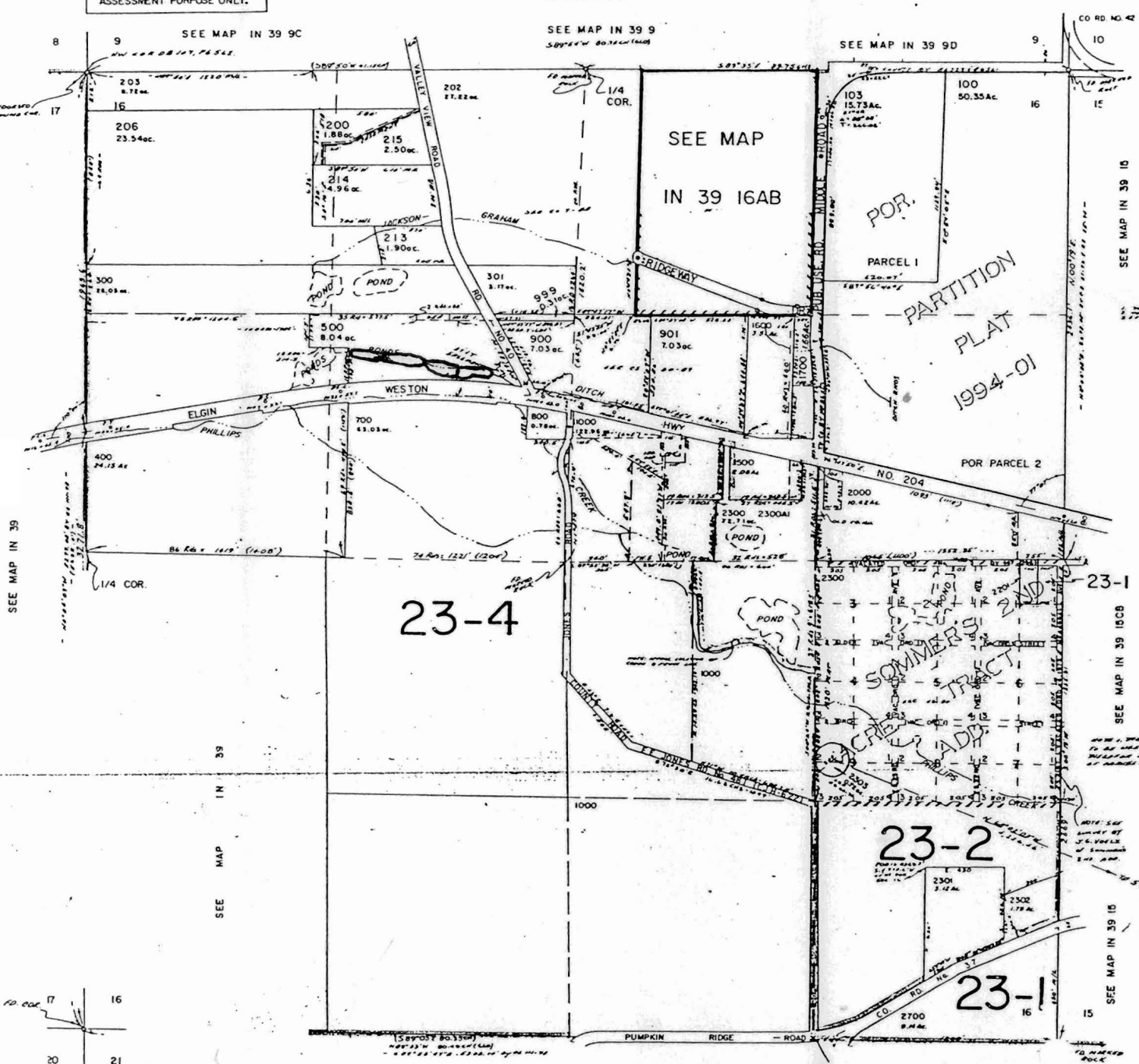


RECEIVED
 APR 18 1994
 DEPT. OF LAND USE STATE OF OREGON
 ASSESSMENT DIVISION

RECEIVED

DEC 23 1994

WATER RESOURCES DEPT.
 SALEM, OREGON



SEE MAP IN 39

SEE MAP IN 39

SEE MAP IN 39 9

SEE MAP IN 39 9D

CO RD NO. 2

SEE MAP IN 39 10

SEE MAP IN 39 15CB

SEE MAP IN 39 15

23-4

23-2

23-1

23-1

Application No. R-84314
 Permit No. 12888