

INDORSED FOUND COR. 17

RECEIVED

DEC 23 1990

WATER RESOURCES DEPT. SALEM, OREGON

203 8.72 ac.

202 27.22 ac.

206 23.54 ac.

200 1.88 ac.

215 2.50 ac.

214 4.96 ac.

213 1.90 ac.

300 28.05 ac.

301 3.17 ac.

500 8.04 ac.

999 0.31 ac.

900 7.03 ac.

400 24.15 ac.

700 63.03 ac.

800 0.78 ac.

1/4 COR.

23-4

Application No. R-84317
Permit No. R-12891

SEE MAP IN 39

KK V-4

RRK

1" = 400'

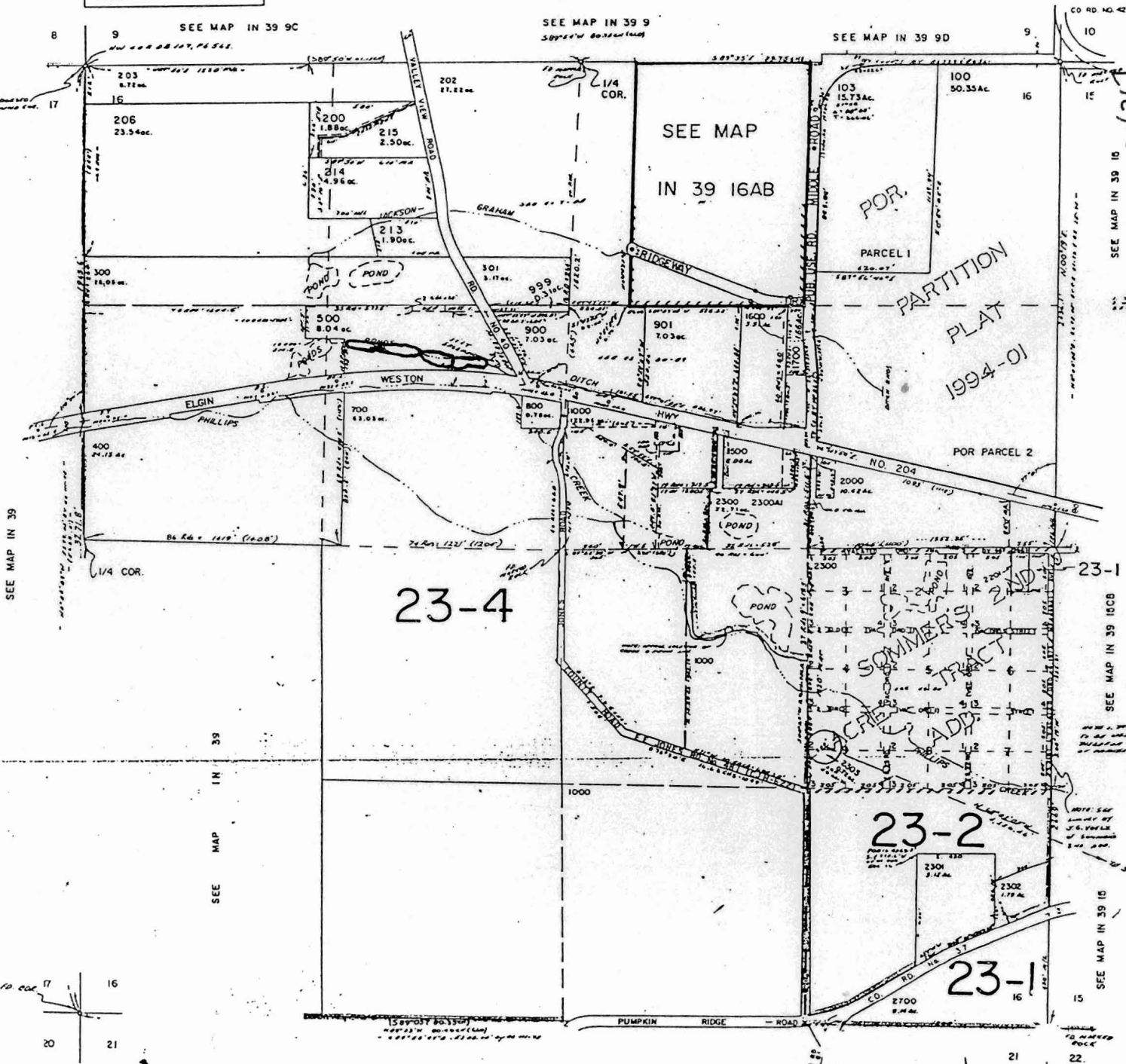
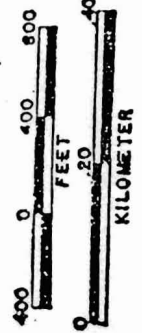
UNION

THIS MAP WAS PREPARED FOR ASSESSMENT PURPOSE ONLY.

SEE MAP IN 39 9

SEE MAP IN 39 9D

SCALE 1:9600



CANCELLED NOS.

- 101 102 201
801 802 803
1100 1002
1201 1200
1400 1300
1701 1800
1900 2100
2200 2400
2401 2402
2500 2600
2600 2000A1

Application No. R-8431
Permit No. R-12891

RECEIVED APR 18 1994
DEPT. OF FENHIE STATIC OF OREGON
ASS. & APPRAISAL DIV

RECEIVED DEC 23 1990
WATER RESOURCES DEPT.
SALEM, OREGON