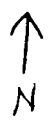


scale 1" = 800' POND #1

POD Located
600'S + 1050'W of NW corner
→ Section 1

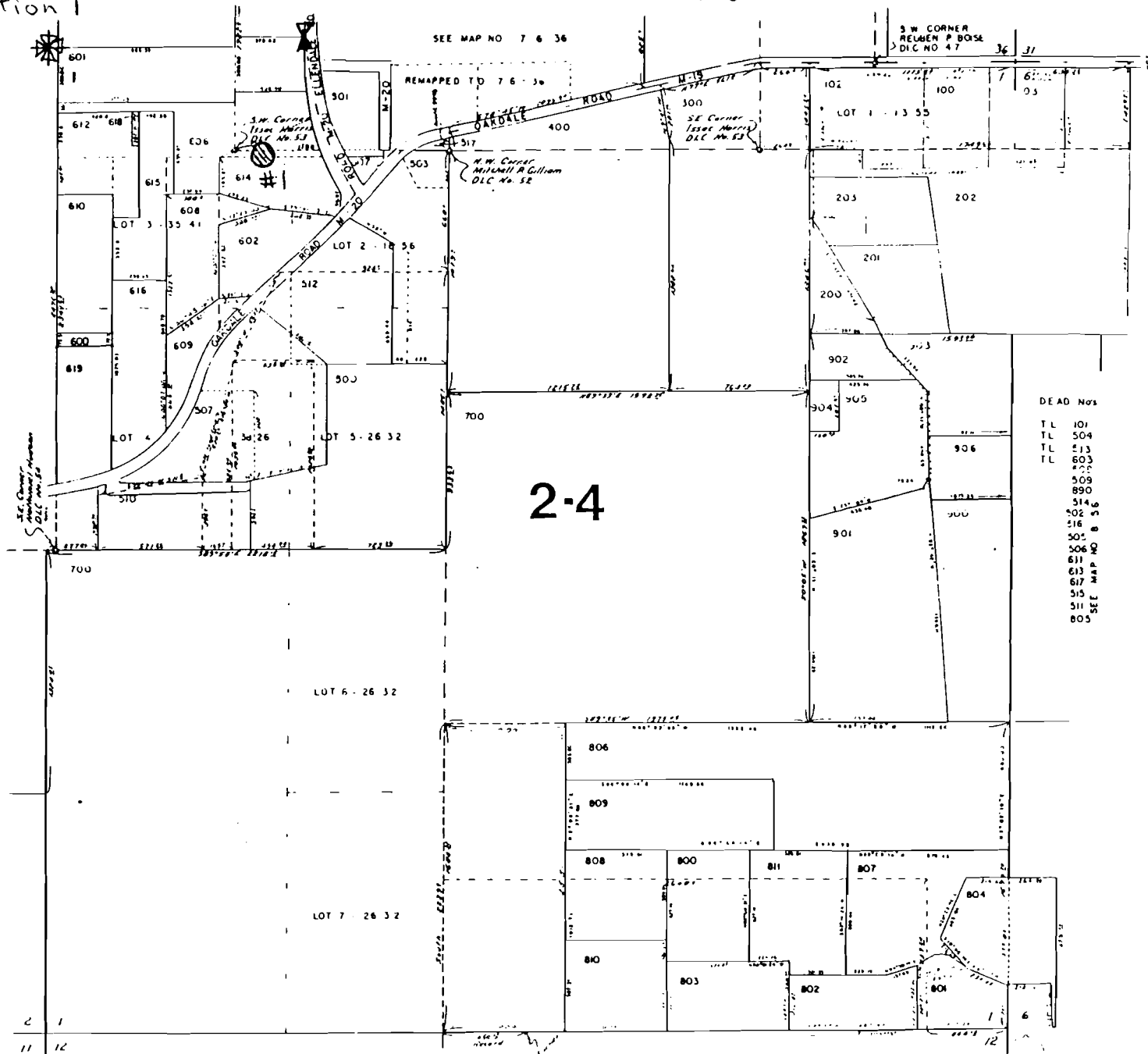
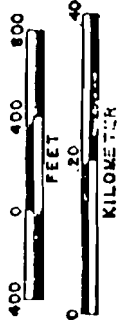
SEC. 1 T8SR6WWM
POLK COUNTY

SCALE 1" = 400'



- ⊙ Proposed place of use 861
- ⊗ section corner
- ⊠ QUARTER CORNER

SC755:1 E7Y55



DEAD Nos

TL	101
TL	504
TL	213
TL	603
	400
	509
	890
	514
	502
	516
	501
	506
	611
	613
	617
	515
	511
	805

SEE MAP NO 8 6 2

RECEIVED

MAR - 1 2000

WATER RESOURCES DEPT
SALEM, OR

R-84353