

Application No. R-84349

RECEIVED

Permit No. 3

APR - 4 2000

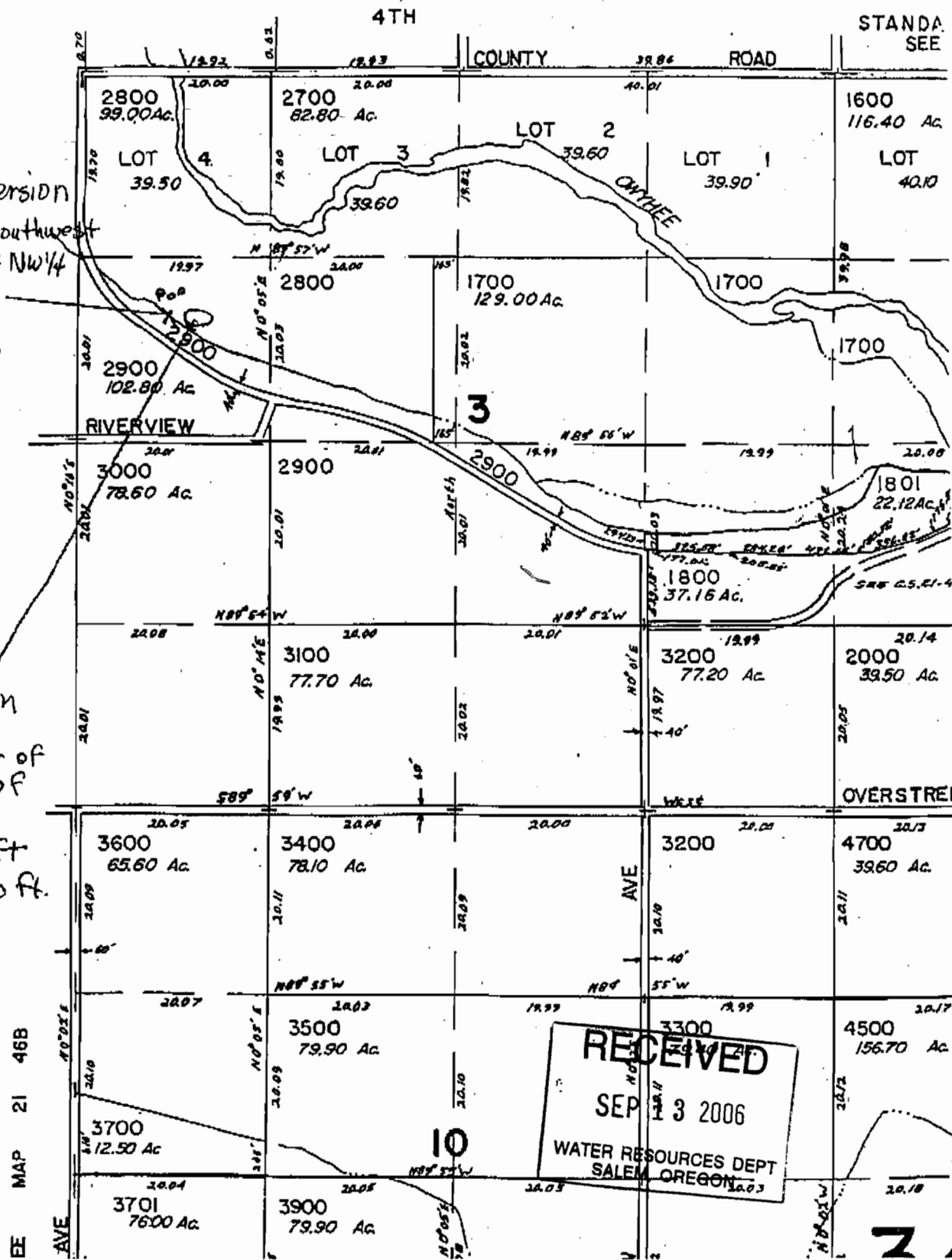
Map #2146

WATER RESOURCES DEPT. SALEM, OREGON

FOR ASSESSMENT PURPOSES ONLY



Book 5
Tray 5



Point of Diversion
beginning at the Southwest
corner of the NW 1/4 NW 1/4
of said sec. 3;
hence E 300 ft
hence S. 300 ft.

Pond Location
beginning at the
southwest corner of
the NW 1/4 NW 1/4 of
said Sec. 3;
hence E 400ft
hence S 250 ft.

RECEIVED
SEP 13 2006
WATER RESOURCES DEPT
SALEM, OREGON

2