

THIS MAP WAS PREPARED FOR
ASSESSMENT PURPOSE ONLY

SW1/4 NW SEC. 35 T.3N. R.10E. W.M.
HOOD RIVER COUNTY

3N 35BC

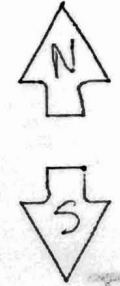
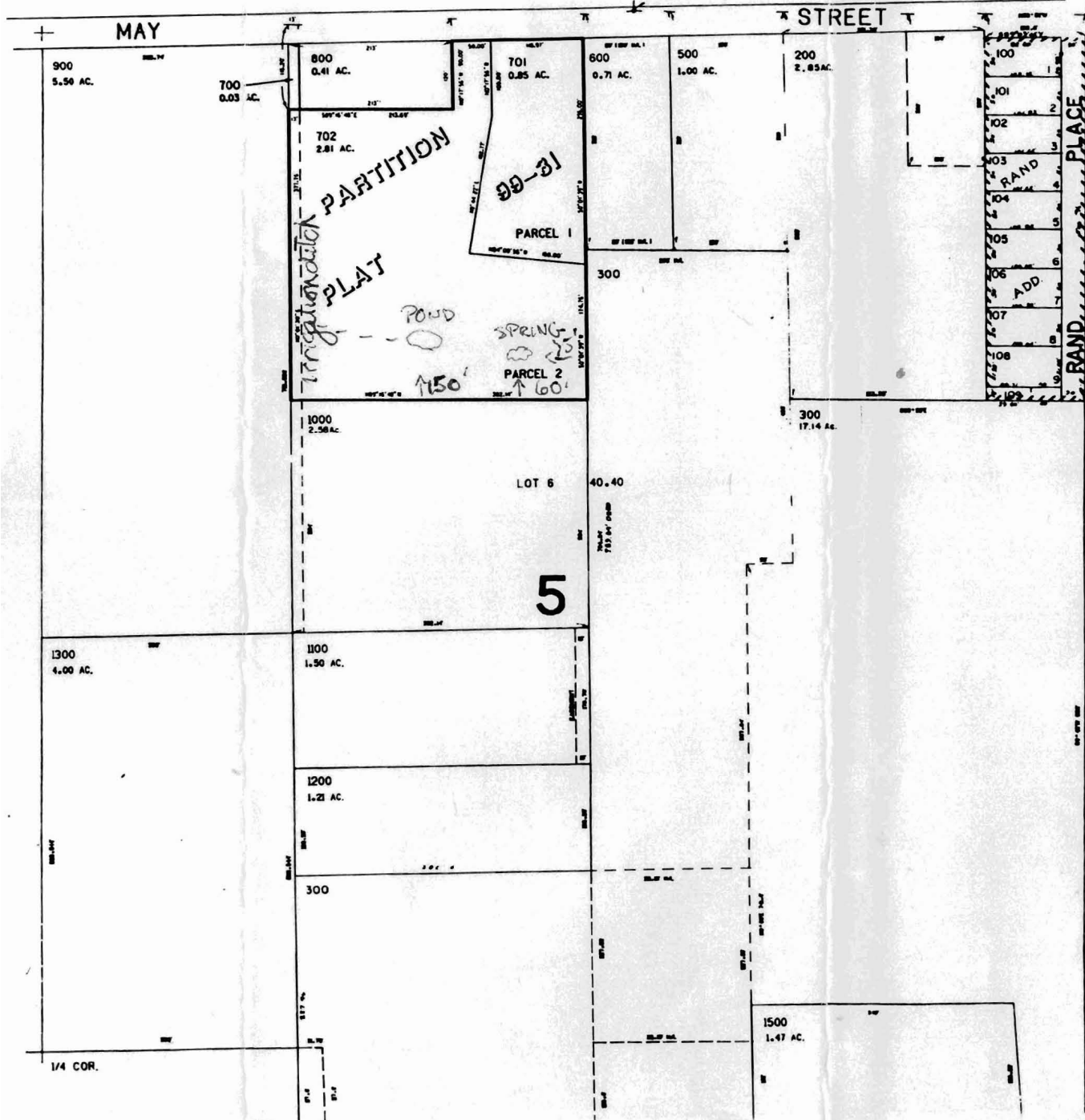
3N 10 35BC

CANCELLED
PARCEL NO 5.

20:
400
1400

1"=400'
SEE MAP 3N 10 35
WLY SW COR. WILLIAM
JENKINS DLC NO. 38

INT. COR.
DLC NO. 38



Application No. R-84354
Permit No.

SEE MAP 3N 10 35B

SEE MAP 3N 10 34A

WATER RESOURCES DEPT.
SALEM, OREGON

MAR 21 2000

RECEIVED

3N 10 35BC

JAN 12 2000