

RECEIVED

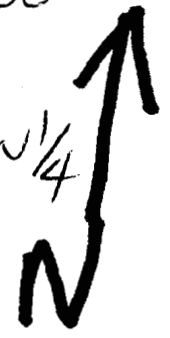
JUN 08 2000

WATER RESOURCES DEPT
SALEM, OREGON

T. 26 S., R. 6 W., SEC 23

1" = 100'

SW 1/4 SW 1/4



S.W. COR. PARCEL 1
PER P.P. 1995-0094

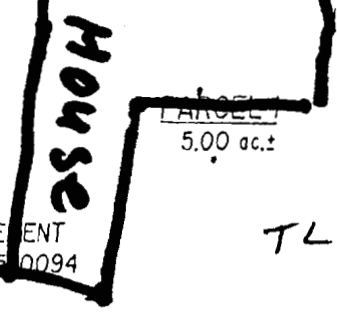
20' WIDE
UTILITY
EASEMENT
TO BENEFIT
PARCEL 1
AS SHOWN
HEREON.

DRAINFIELD EASEMENT
PER P.P. 1995-0094
TO SERVE PARCEL 1
AS SHOWN HEREON.

FISHER ROAD
FISHER ROAD CO. RD. 189 R/W VARIES

60' WIDE ACCESS, UTILITY & STORM DRAIN EASEMENT
PER P.P. 1995-0094 TO BENEFIT PARCELS 2 & 3
AS SHOWN HEREON AND PARCEL 1 OF
P.P. 1995-0094.
(FUTURE EXTENTIONS MAY
BE MADE WITH OWNERS CONSENT)

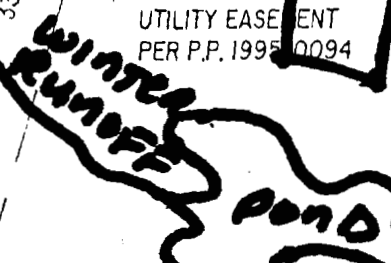
STRATFORD LANE



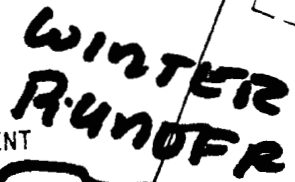
35' WIDE
UTILITY EASEMENT
PER P.P. 1995-0094

TL-113

N21°32'17"E 365.71'



15' WIDE UTILITY &
DRAINAGE EASEMENT



R = (157.00')
A = (84.00')
CH = (S80°53'42"E)
(83.00')

N18°16'17"E
70.05'

R = (130.00')
A = (195.36')
CH = (N72°12'49"E)
(177.49')

PARCEL 2
5.45 ac.±

N16°15'27"E 473.07'
338.86'

465.50'
(708.45')
(N89°30'56"W 724.03')

POND: 140' N & 680' E
FROM SW. COR. SEC. 23

NO
CAP

Application No. R-84453
Permit No. R13001