

SECTION 18 T.32S. R.4W. W.M.  
DOUGLAS COUNTY

1"=400'

RECEIVED

JUL 06 2000

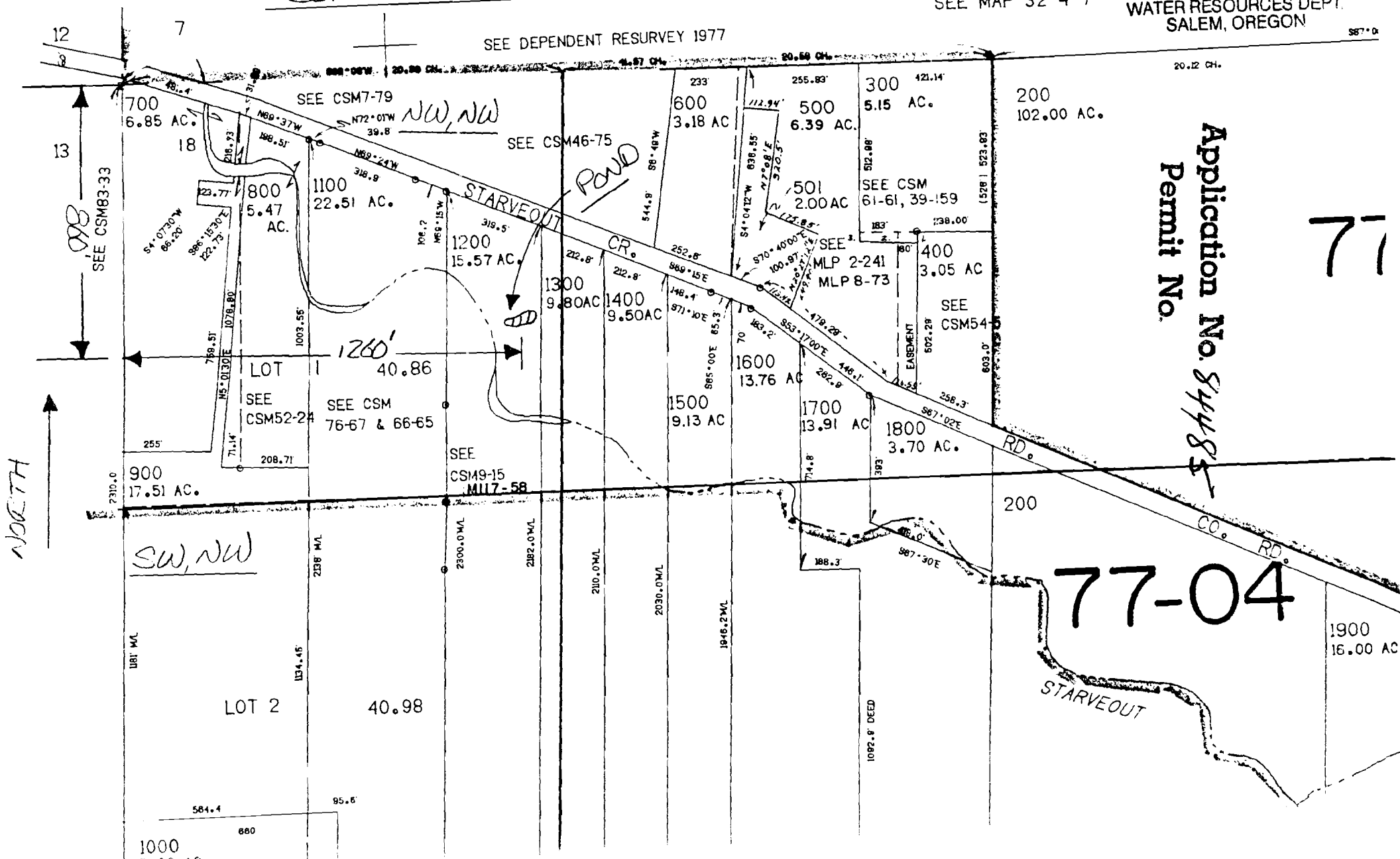
SEE MAP 32 4 7

WATER RESOURCES DEPT.  
SALEM, OREGON

MAP WAS PREPARED FOR  
ASSESSMENT PURPOSE ONLY.

POND IS 860' SOUTH  
& 1260' EAST OF NE  
CORNER OF SECTION 18

SEE DEPENDENT RESURVEY 1977



Application No. 84485  
Permit No.

77

77-04

NORTH

SW, NW

STARVEOUT  
CR.  
POND

STARVEOUT

SEE CSM83-33

LOT 1  
SEE CSM52-24

LOT 2

SEE CSM46-75

SEE CSM19-15  
MLP 7-58

SEE MLP 2-241  
MLP 8-73

SEE CSM54

SEE CSM7-79

SEE CSM 76-67 & 66-65

1092.8' DEED

587.0'

20.12 CH.

20.58 CH.

4.57 CH.

20.89 CH.

20.4

700  
6.85 AC.

800  
5.47 AC.

1100  
22.51 AC.

1200  
15.57 AC.

1300  
9.80 AC.

1400  
9.50 AC.

1500  
9.13 AC.

1600  
13.76 AC.

1700  
13.91 AC.

1800  
3.70 AC.

900  
17.51 AC.

600  
3.18 AC.

500  
6.39 AC.

300  
5.15 AC.

200  
102.00 AC.

501  
2.00 AC.

400  
3.05 AC.

1900  
16.00 AC.

1000  
5.00 AC.