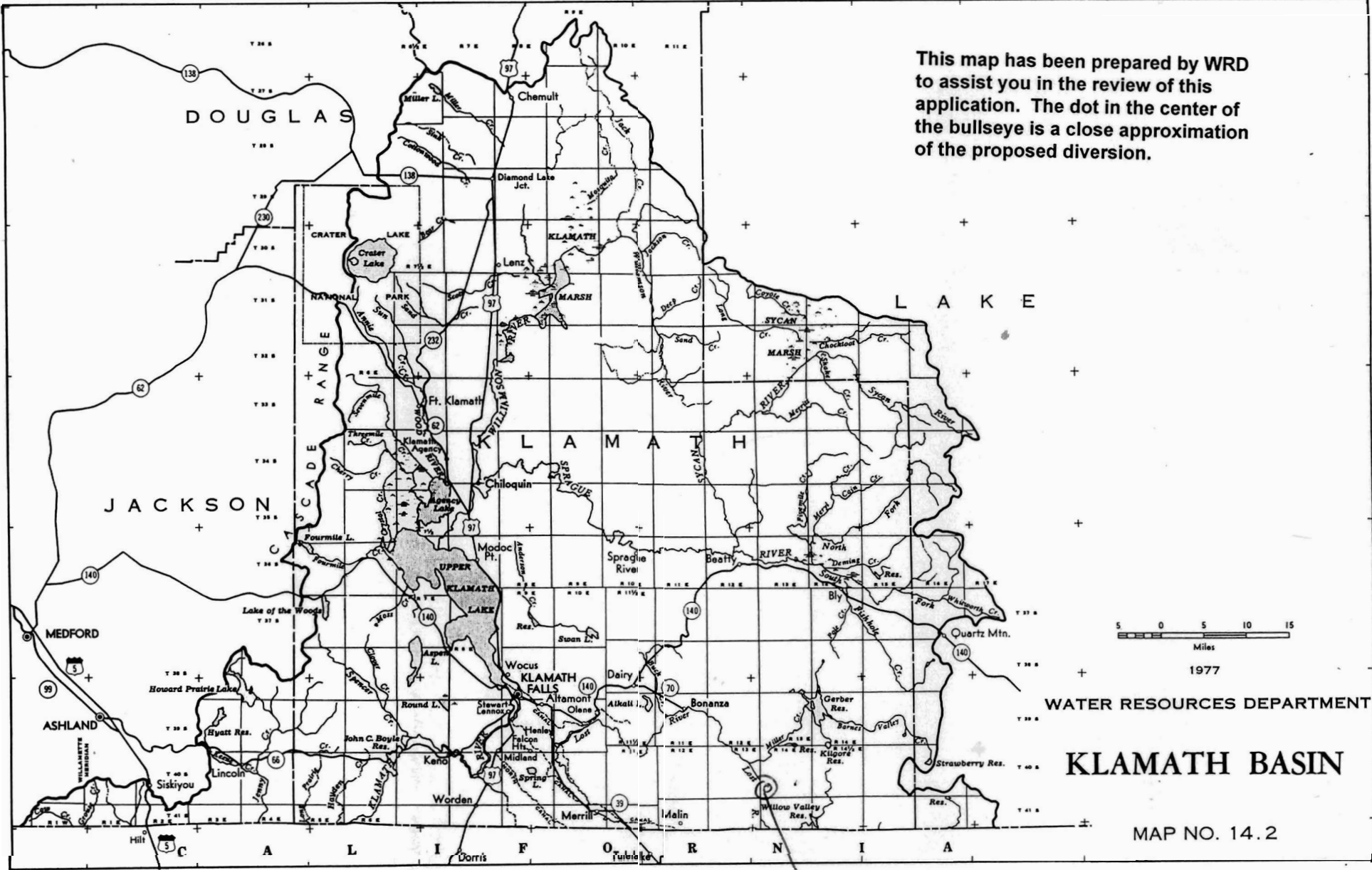


This map has been prepared by WRD to assist you in the review of this application. The dot in the center of the bullseye is a close approximation of the proposed diversion.

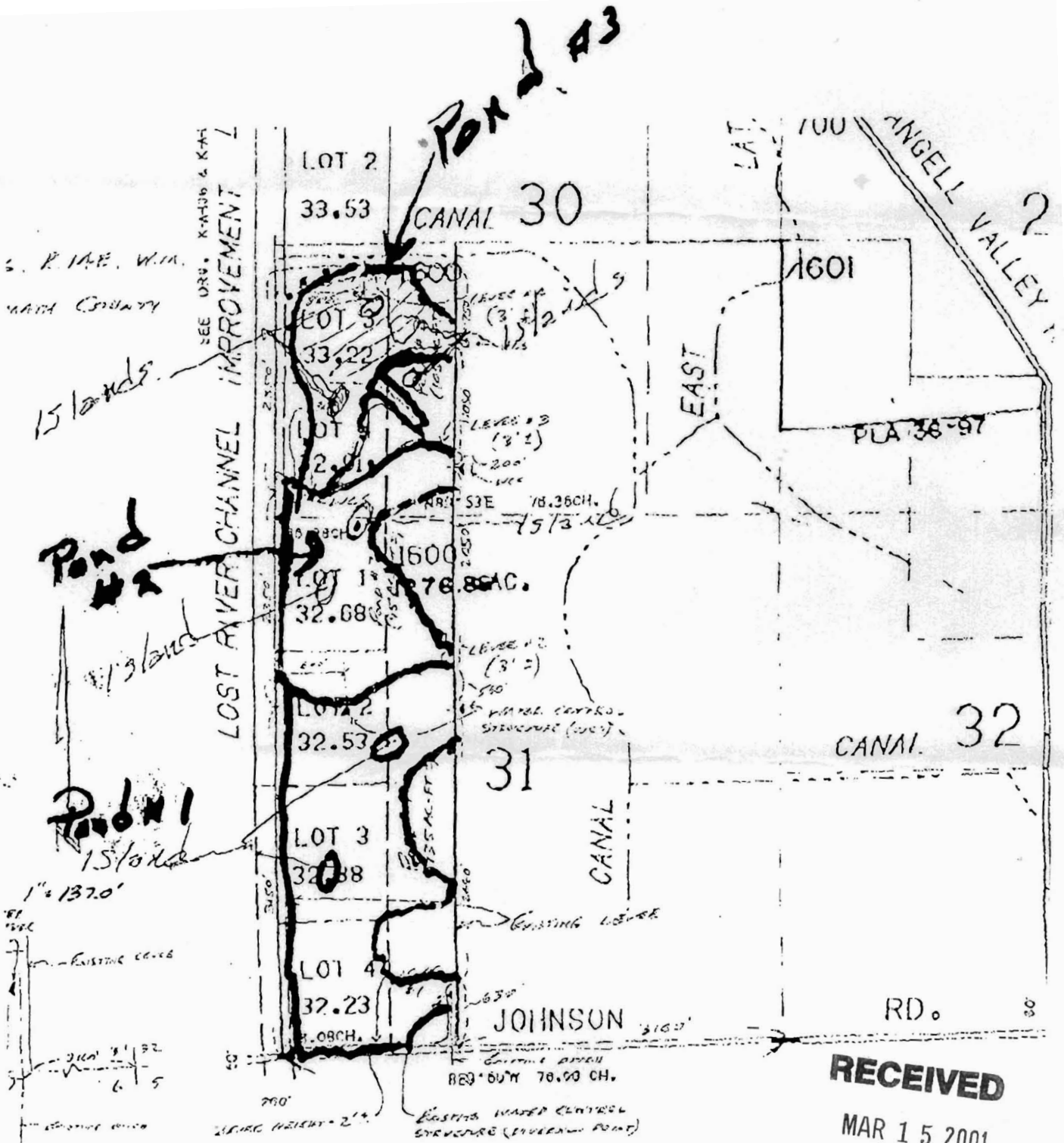


R84656
R84657
R84658

02-08-01 13:51 500 378 0203

WATER RIGHTS NO.

2002



RECEIVED

MAR 15 2001

WATER RESOURCES DEPT.
SALEM, OREGON