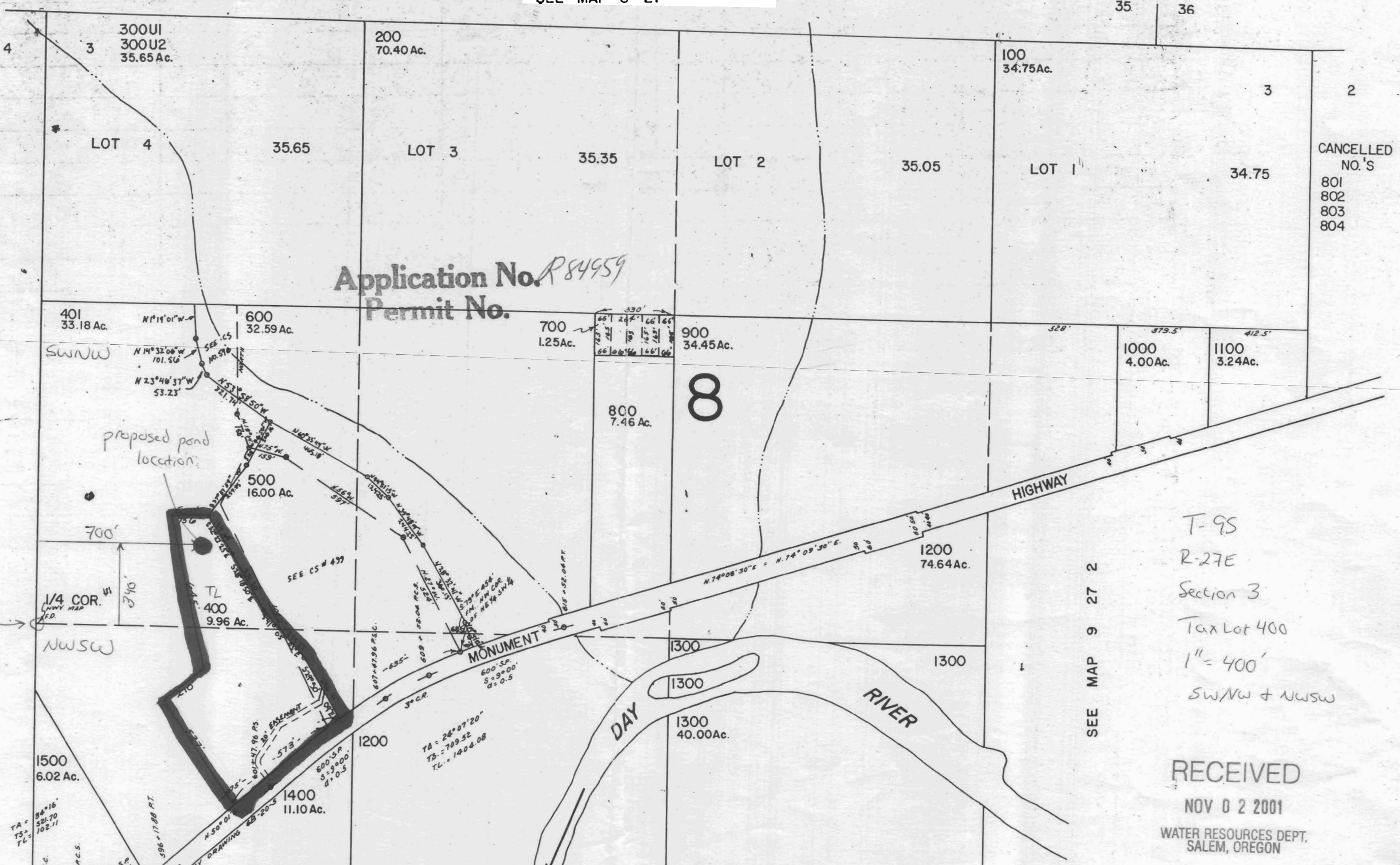


SECTION 3 T.9 S. R.27E. W.M.

GRANT COUNTY

1" = 400'

SEE MAP 8 27



Application No. R84959
Permit No.

8

CANCELLED NO.'S
801
802
803
804

SEE MAP 9 27 4

SEE MAP 9 27 2

T-9S
R-27E
Section 3
Tax Lot 400
1" = 400'
SW/4 + NWSW

RECEIVED
NOV 02 2001
WATER RESOURCES DEPT.
SALEM, OREGON