

# MAP 3: ROADS AND DRAINAGE

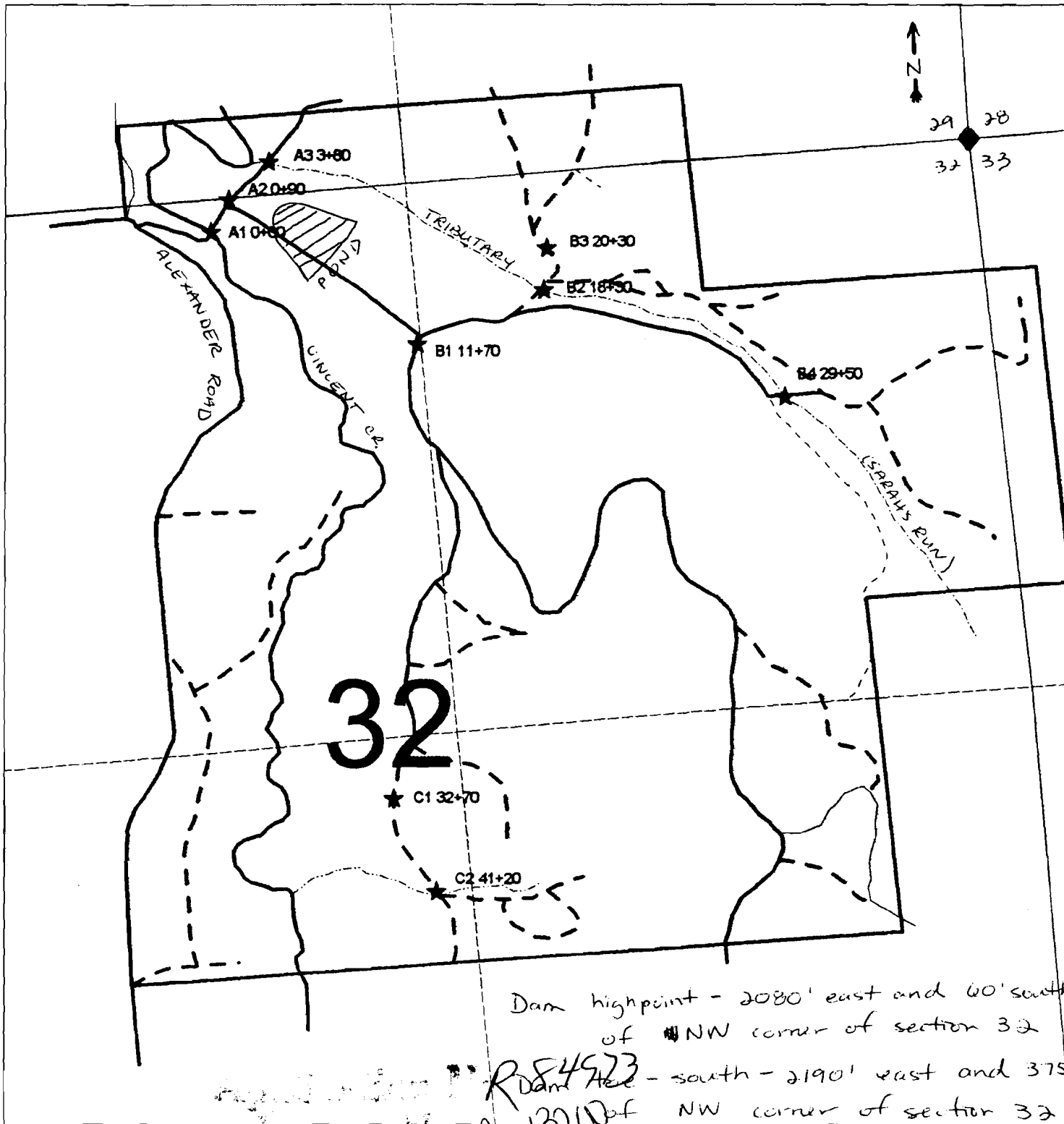
EHLERS TRACT  
 Sections 29, 32 & 33  
 T10S, R6W, Benton Co.  
 Map Scale: 1" = 600'

- Surfaced roads
- - - Unsurfaced roads
- ★ Stream crossing structure
- ★ Drainage structure

RECEIVED

NOV 26 2001

WATER RESOURCES DEPT.  
 SALEM, OREGON



Dam highpoint - 2080' east and 60' south  
 of NW corner of section 32

Dam toe - south - 2190' east and 375' south  
 of NW corner of section 32

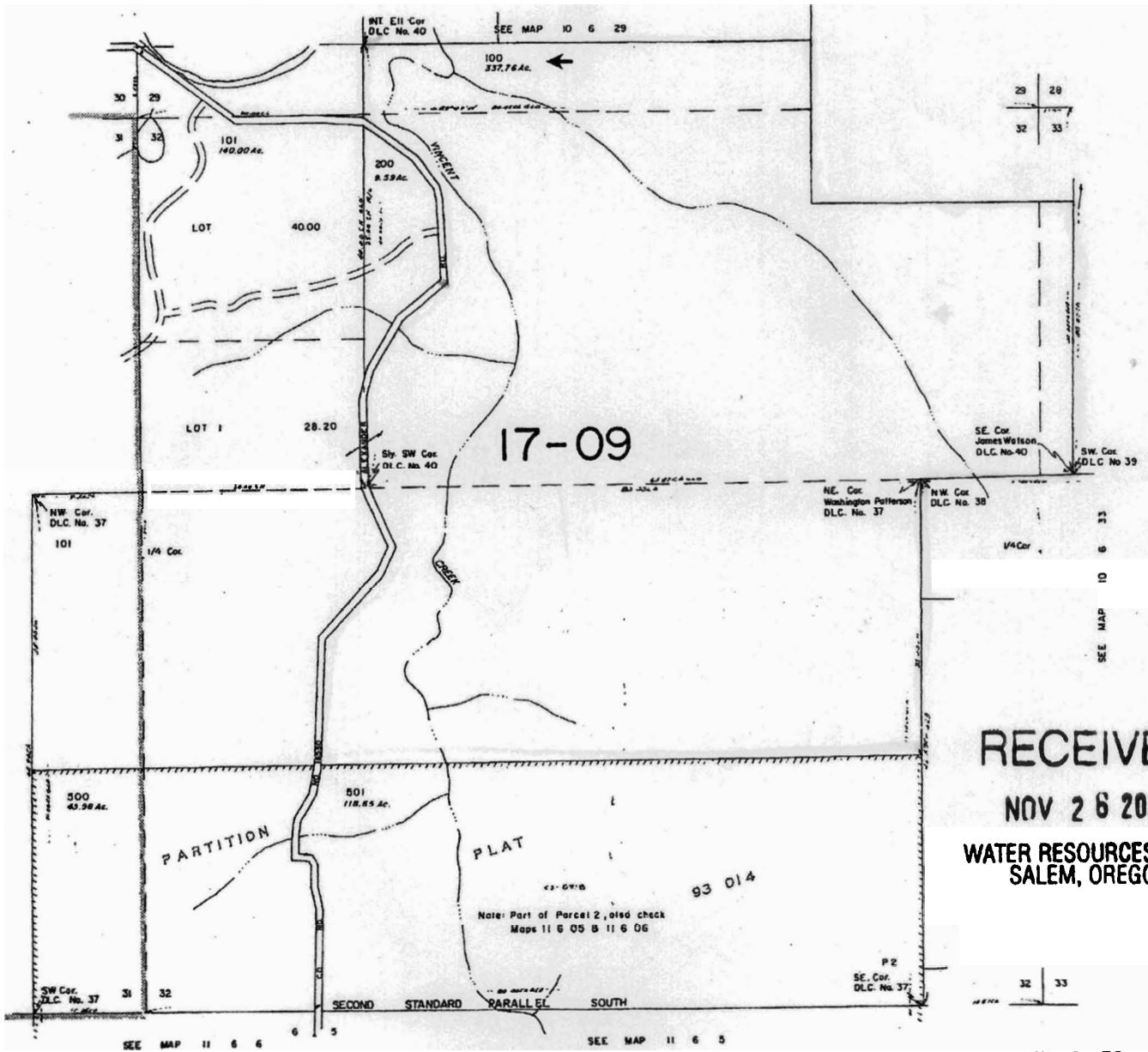
Dam toe - east - 2415' east and 150' south  
 of NW corner of section 32

POND T10S  
 ROW  
 S 32  
 NW 1/4 NE 1/4 NE 1/4 NW 1/4  
 ADP 7/3/02  
 Tax Lot # 100

*Handwritten notes:*  
 R-54973  
 Section No. 1-13200

SECTION 32 T10S. R.6W. W.M.  
BENTON COUNTY  
1" = 400'

10 6 32  
REV. 10-09-96  
CANC.  
300  
400



RECEIVED  
NOV 26 2001  
WATER RESOURCES DEPT.  
SALEM, OREGON

Application No. R 84973  
Permit No. R-13200

RECEIVED  
OCT 19 2001  
WATER RESOURCES DEPT  
SALEM, OREGON

THIS MAP IS PROVIDED AS A COURTESY OF OREGON TITLE INSURANCE COMPANY

This print is made solely for the purpose of assisting in locating the subject property.  
The company assumes no liability for variations, if any, which may be ascertained by actual survey.