

Application No. R-84797
Permit No.

2941.8'

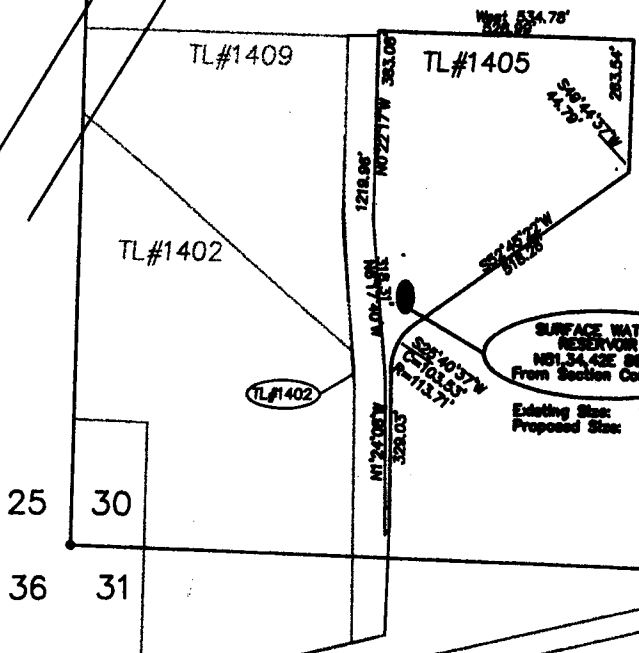
1/4 Corner

1/4 Corner

Bonneville Powder
Administration
Eugene-Mapleton Line



SCALE 1" = 400'



25 30
36 31

ROUTE "F"
(W. 11th Avenue)

GOBLE RD 1/4 Corner

MAP of SURFACE WATER RESERVOIR
For
SECTION 30 T.17S. R.4W TL. 1405 W.M
LANE COUNTY OREGON

SCALE 1" = 400'

REC'D

JUL 01

WATER RESERVOIR
SALEM, OREGON