

RECEIVED

JAN 03 2001

WATER RESOURCES DEPT.
SALEM, OREGON

----- 1255' To Sec. Cor. -----

Sec. 6, T1N, R10E, W.M.
Sec. 7, T1N, R10E, W.M.
TAX LOT 300

Drain Field

110' Approx

RECEIVED

FEB 28 2001

WATER RESOURCES DEPT.
SALEM, OREGON

OREGON STATE HIGHWAY 281.03 7A

Proposed House

Proposed well

BIRDIE CR.

PROPOSED
RESERVOIR
#1

PROPOSED
RESERVOIR
#2

3.6 AC

75' Approx

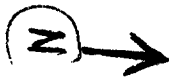
#1 CENTER of RESERVOIR
LOCATED:
260' SOUTH & 1080' EAST
of THE N.W. CORNER of SEC 7

#2 CENTER of RESERVOIR
LOCATED:
380' SOUTH & 1280' EAST
of THE N.W. CORNER of SEC. 7

1" = 100'

Hood River County

MAR 13 2000

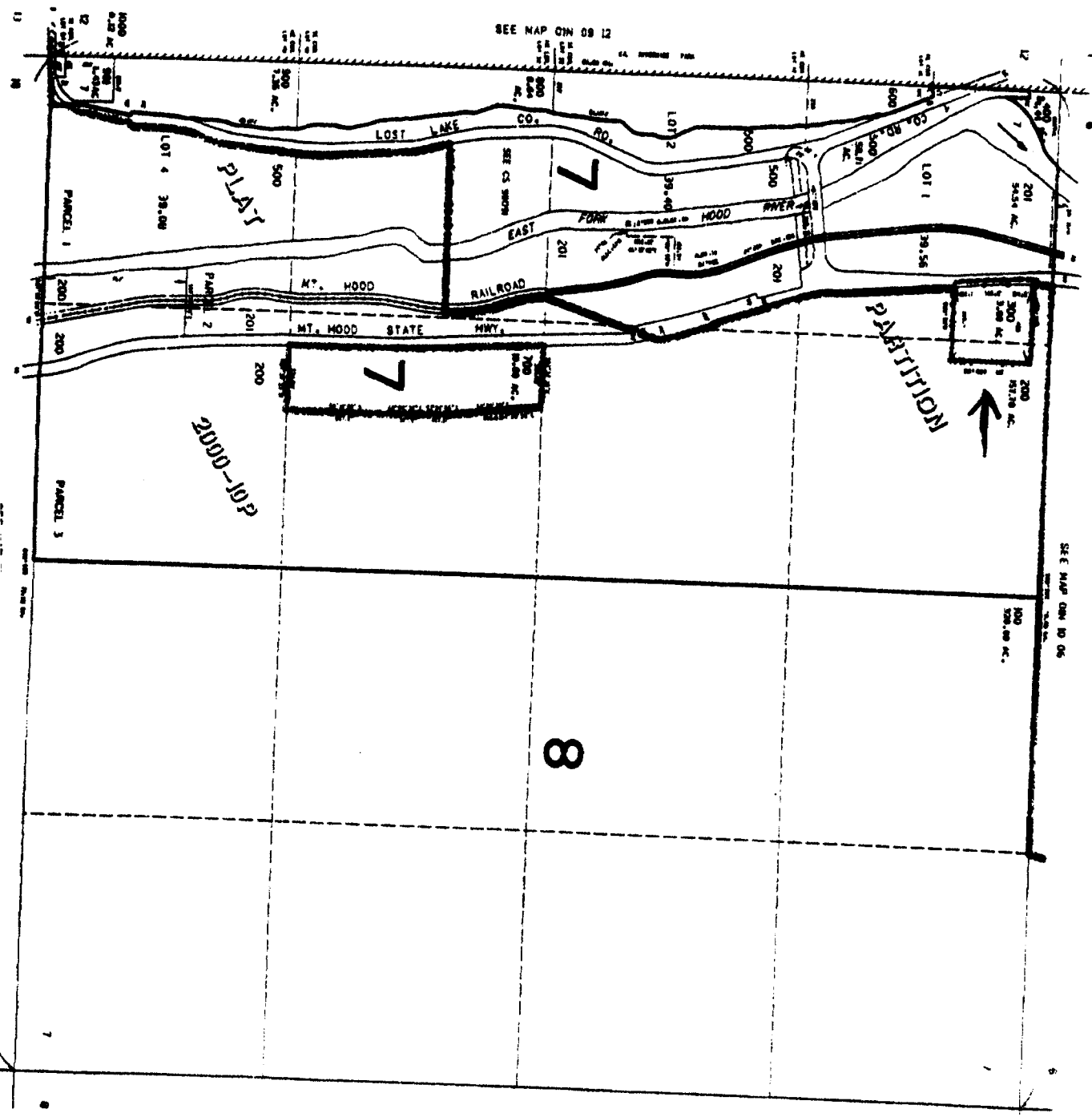


SCALE 1:9600



THIS MAP WAS PREPARED FOR
ASSESSMENT PURPOSE ONLY

SECT 7 T.1N. R.10E. W.M.
HOOD RIVER COUNTY
1:2500



SEE MAP ON 10 08

SEE MAP ON 10 06

RECEIVED

FEB 28 2001

WATER RESOURCES DEPT.
SALEM, OREGON

10107

107