

NW1/4 SEC. 27 T.26S. R.6 W. W.M.
DOUGLAS COUNTY

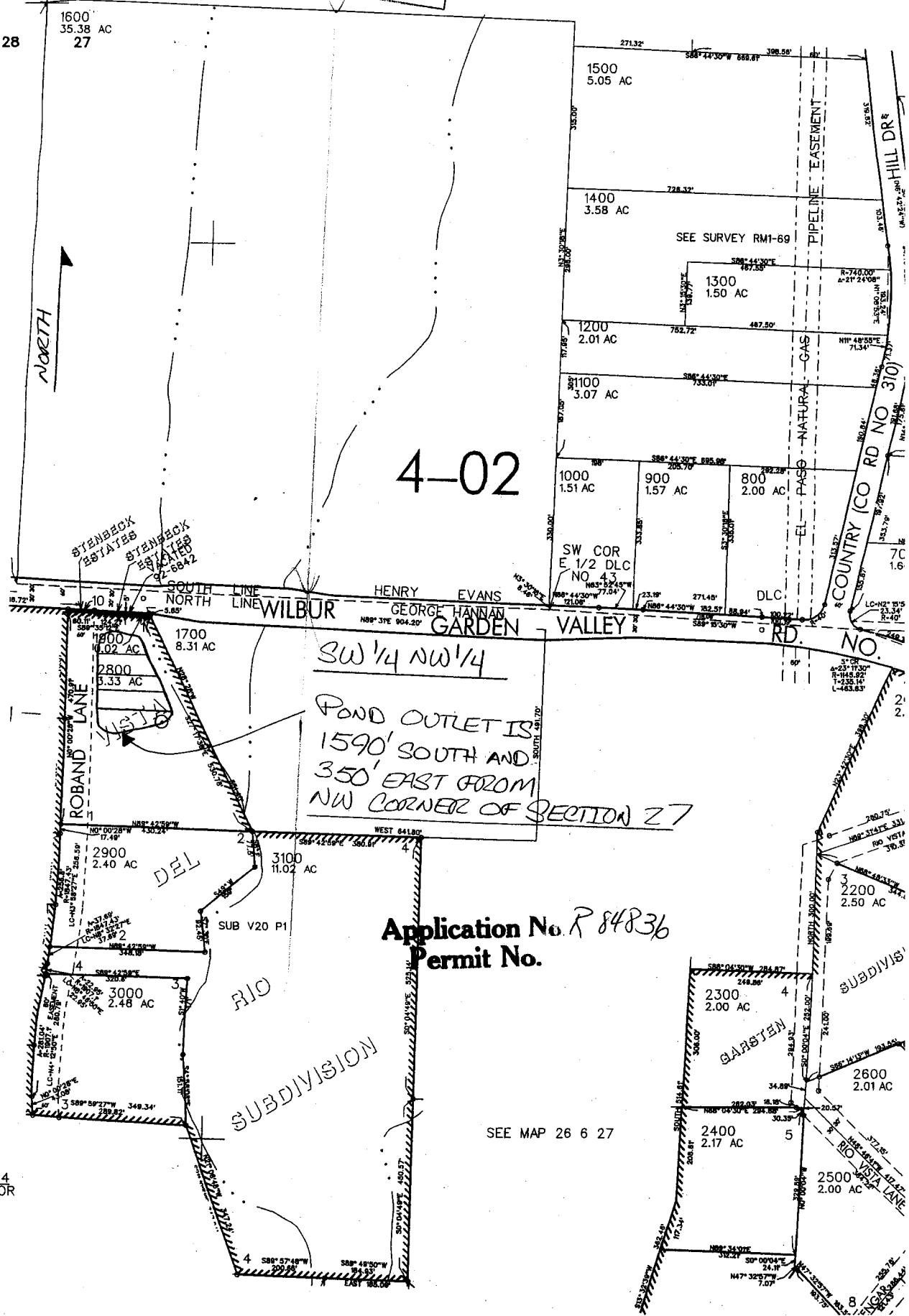
1" = 200'

SEE MAP 26 6 22C

21 22

28 27

RECEIVED
AUG 13 2001
WATER RESOURCES DEPT
SALEM, OREGON



4-02

POND OUTLET IS
1590' SOUTH AND
350' EAST FROM
NW CORNER OF SECTION 27

Application No. R 84836
Permit No.

SEE MAP 26 6 27

1/4
COR