

IMPORTANT  
This Map for Assessment  
and Taxation Purposes  
ONLY

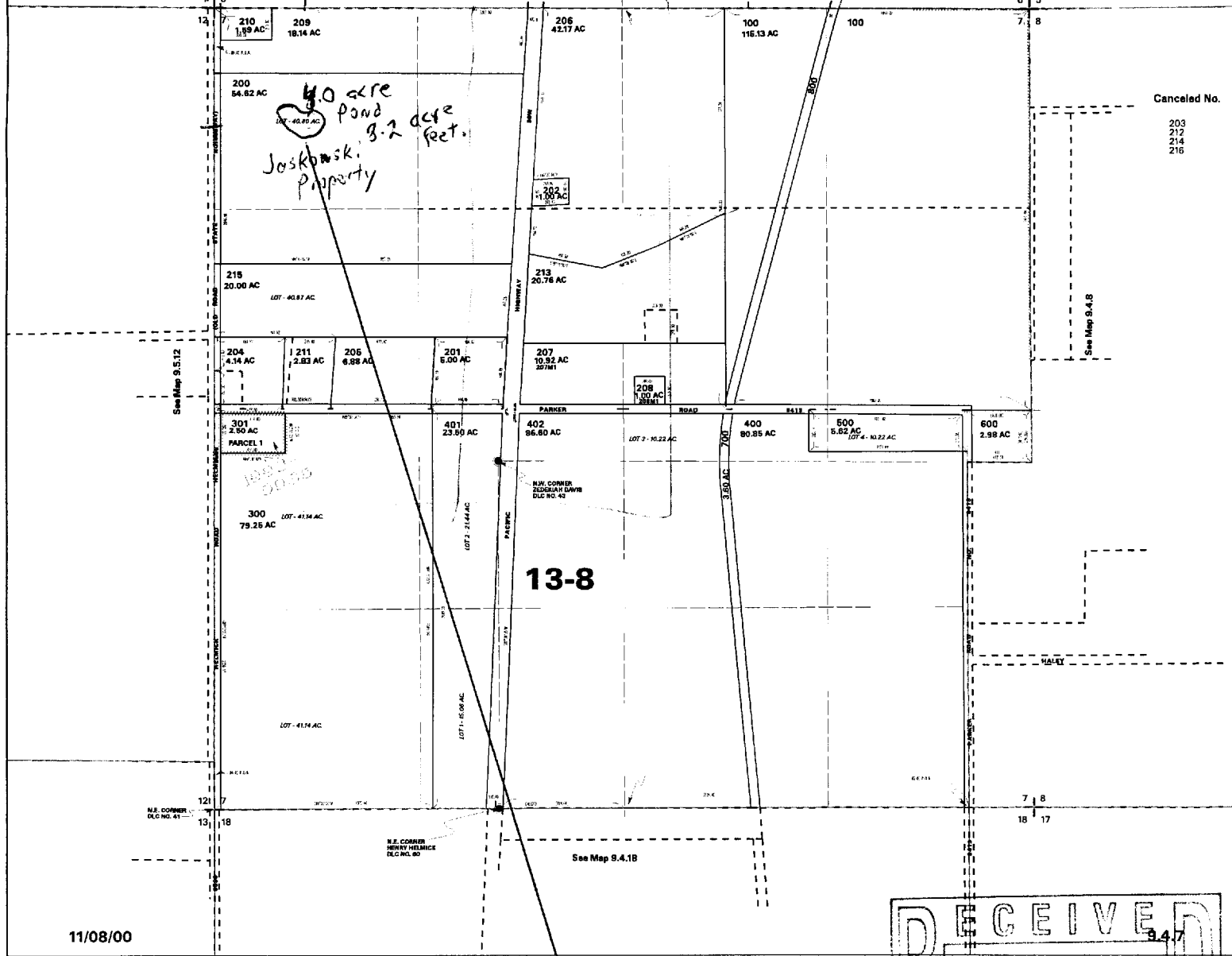
SEC. 7 T9S R4W WM  
POLK COUNTY

9.4.7

Scale 1" = 400'  
1000'  
DJP

See Map 9.4.5

See Map 9.4.6



RECEIVED  
AUG 17 2001  
WATER RESOURCES DEPT  
SALEM, OR

Application No. R84840  
Permit No.

Pond #1 is located  
750' S and 600' E — 600'  
from section corner  
6, 7, 11 and 12.  
Location of pond is the  
~~SW 1/4~~ NW 1/4 NW 1/4 Sec 7  
T9S R4W.

JASKOWSKI