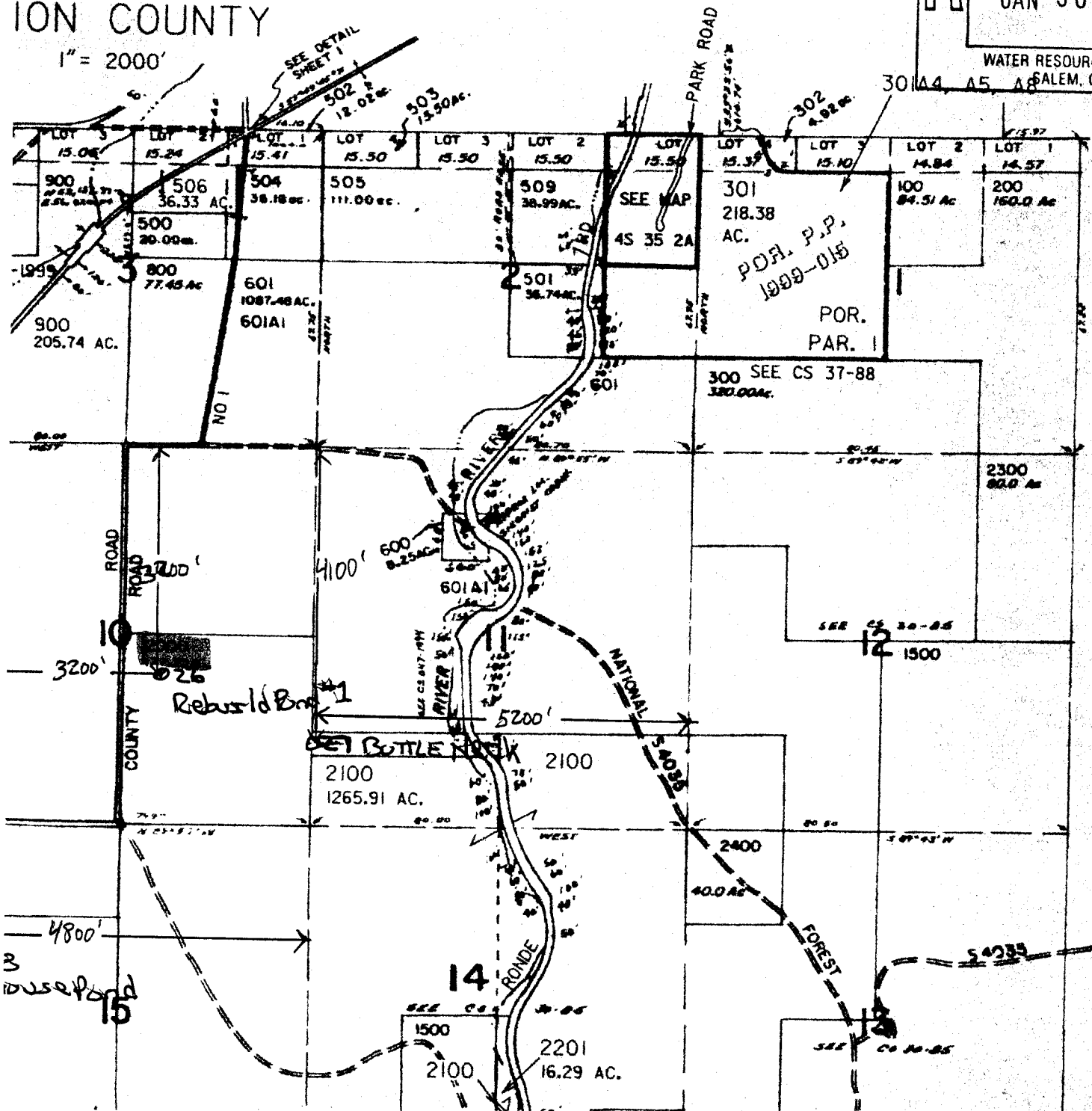


1" = 2000'

JAN 30 2002
 WATER RESOURCES DEPT
 SALEM, OR

AS 35



- CANCELLED NO.
- 301A1, A2, A3, A6, A7
 - 303
 - 304
 - 305
 - 306
 - 306A1, A2, A3
 - 400
 - 507
 - 508
 - 600A1
 - 700
 - 1101
 - 1102
 - 1200A1
 - 1200T1, T2, T3
 - 1202
 - 1203
 - 1204
 - 1700MI
 - 1701
 - 1800
 - 1800MI
 - 1800A1&A2
 - 2200