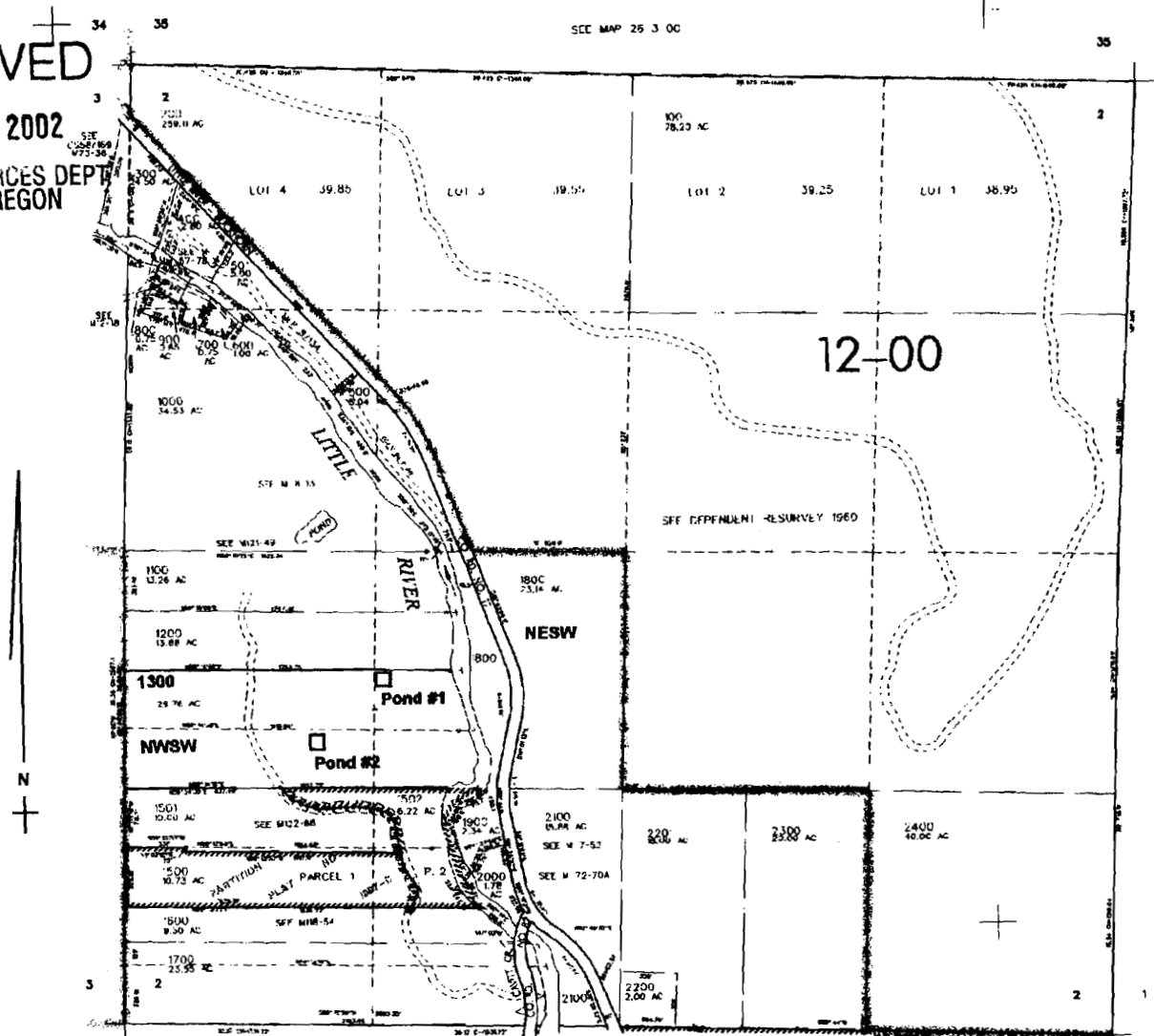


Scale: 1" = 1000'

SEC MAP 25 3 00

RECEIVED  
APR 30 2002  
WATER RESOURCES DEPT  
SALEM, OREGON



Pond #1 located 700 ft. S. and 1400 ft. E. } from W. 1/4 corner Sec. 2  
Pond #2 located 1050 ft. S. and 1050 ft. E. }

Application No. R-85163  
Permit No.