

Application No R-85165  
Permit No. R-13435

TAX LOT 06401

SOUTH EAST QUARTER OF SECTION 25  
T1N R32E

NORTH

SCALE 1" = 660'  
POND TWO

R32E

TAX LOT 06401

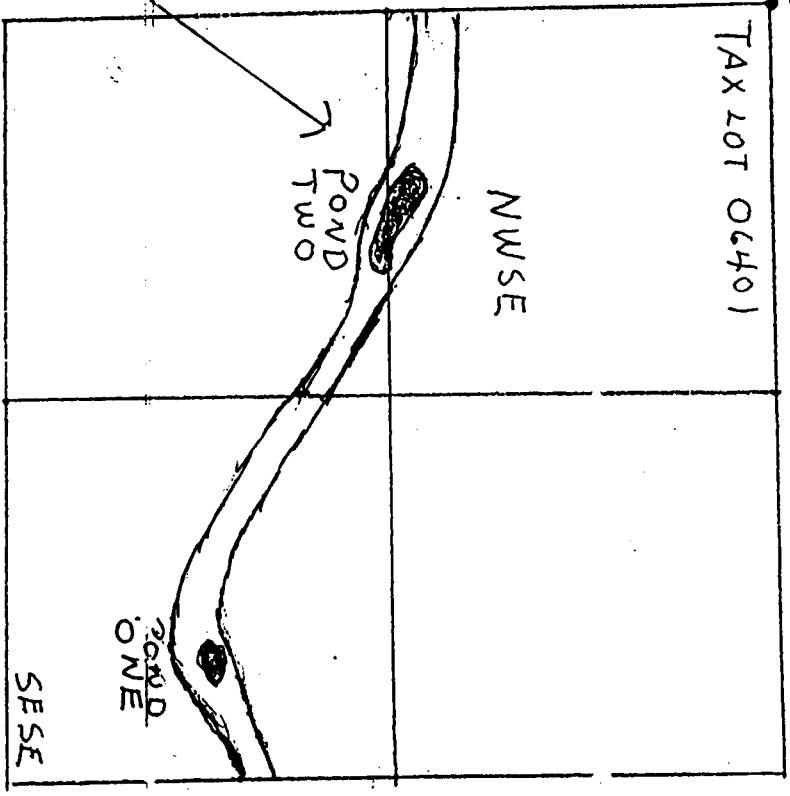
WEST

N

NWSE

POND TWO

1361.25 N. 577.5 E.  
SOUTH 1/4 CORNER  
OF SECTION 25



SOUTH

EAST

RECEIVED

MAY 06 2002

WATER RESOURCES DEPT.  
SALEM, OREGON