

Application No. R-85174
 Permit No. R-13437

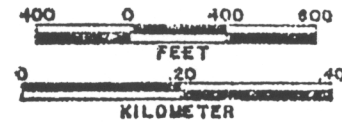
RECEIVED
 NOV 21 1996
 DEPT. OF REVENUE
 STATE OF OREGON

RECEIVED

MAY 14 2002

WATER RESOURCES DEPT.
 SALEM, OREGON

SCALE 1:9600



SEE MAP 2N 12

SEE MAP 2N 12 21

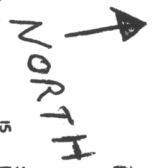
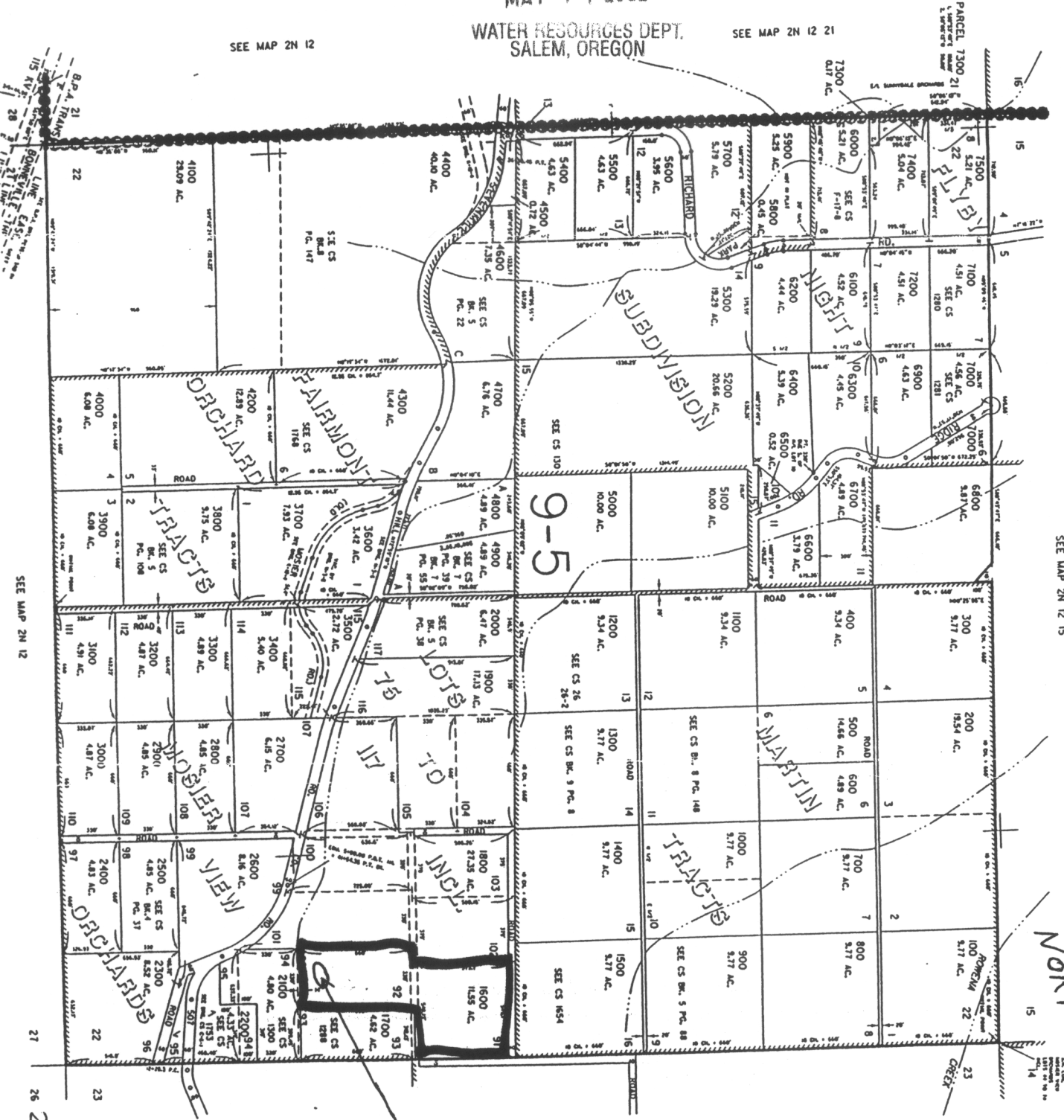
THIS MAP WAS PREPARED FOR
 ASSESSMENT PURPOSE ONLY

SECT 22 T.2N. R.12E. W.M.
 WASCOCO COUNTY
 1" = 400'

SEE MAP 2N 12 15

SEE MAP 2N 12 23B

SEE MAP 2N 12 23C



SEE MAP 2N 12

27

26

2N 12 22

22

2 22