

R-8 5118

Application No.

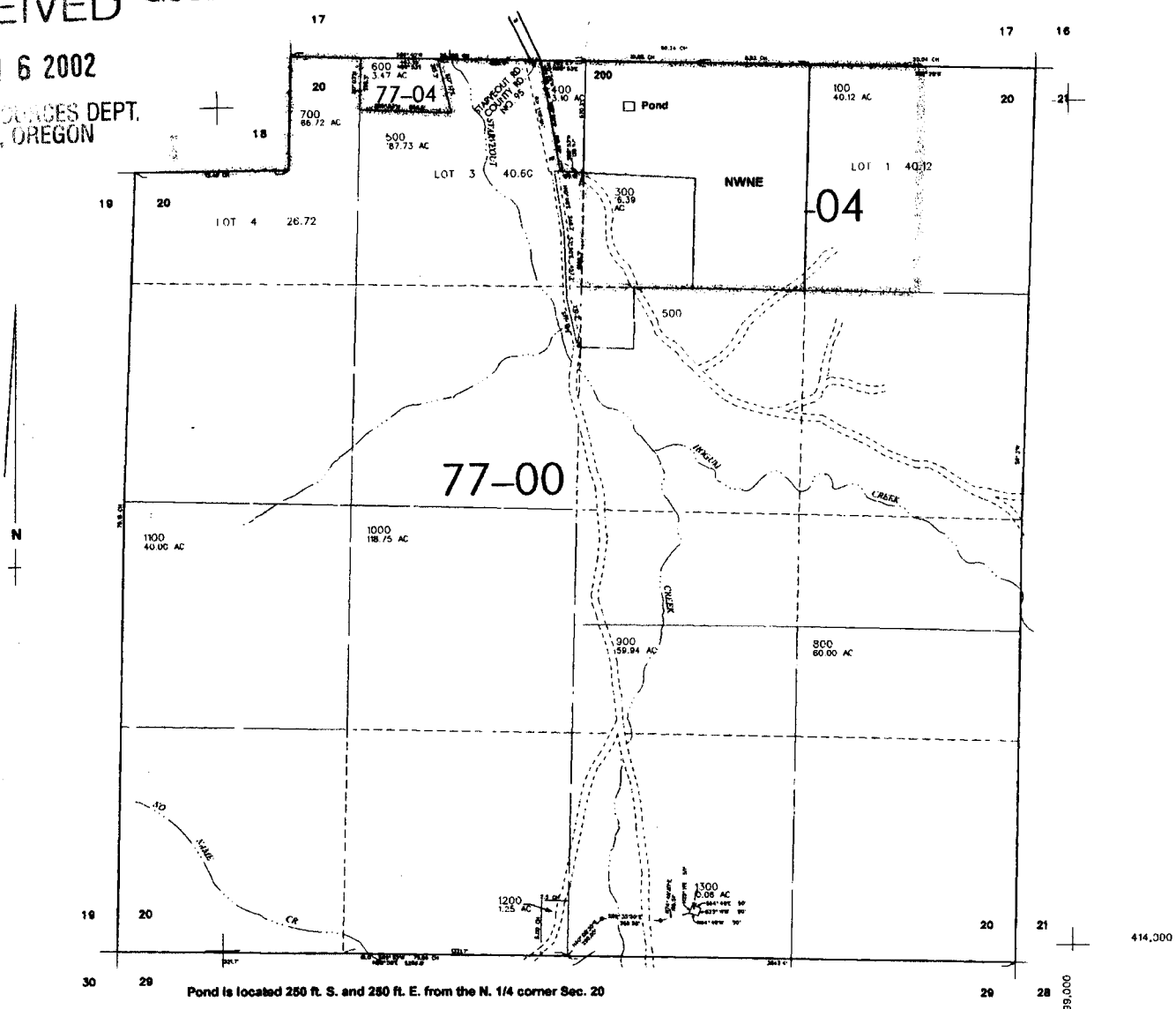
SEC. 20 T.32S. R.4 W. W.M.
DOUGLAS COUNTY

Scale: 1" = 1000'

RECEIVED Permit No. R-13443

MAY 16 2002

WATER RESOURCES DEPT.
SALEM, OREGON



Pond is located 250 ft. S. and 280 ft. E. from the N. 1/4 corner Sec. 20

414,300

4,199,000